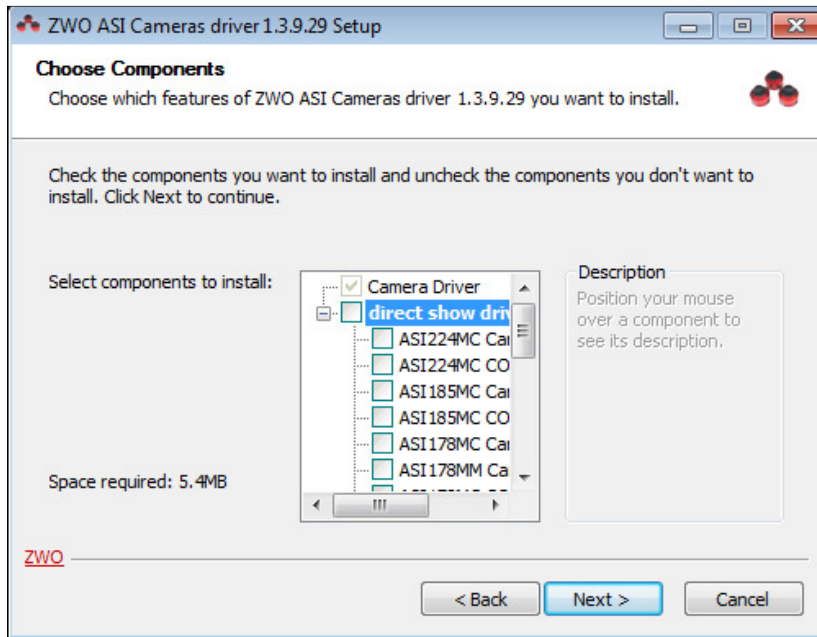




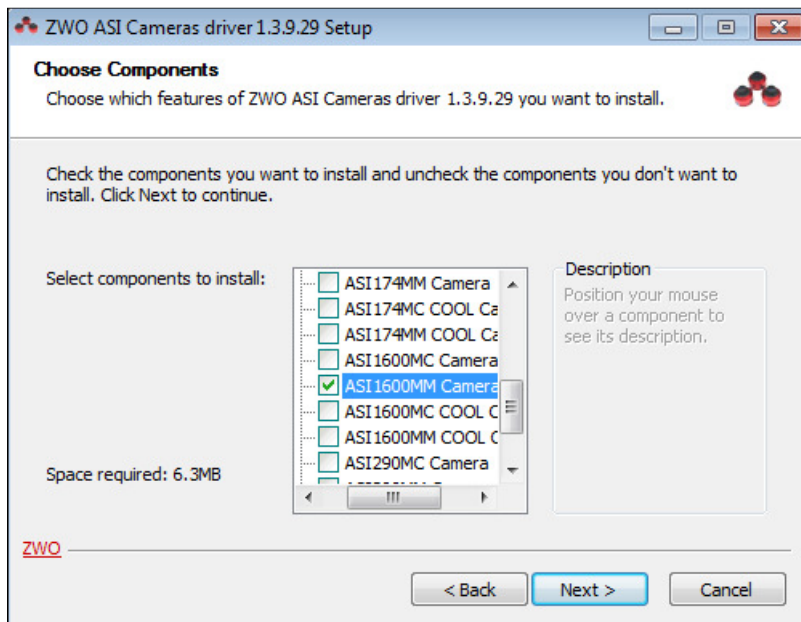
Camera setup and installation addendum for 100x100 shack-hartmann

Release date : 11/28/16

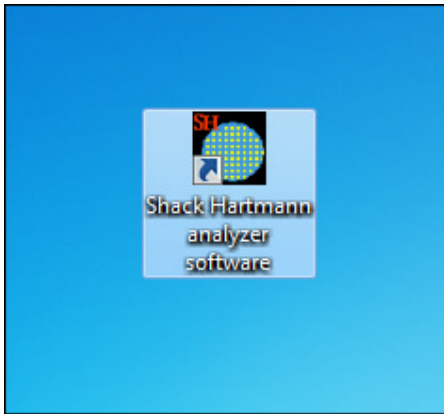
Please launch Setup file: *start is setup_SH100x100.exe*, and during the process, this window will appear:



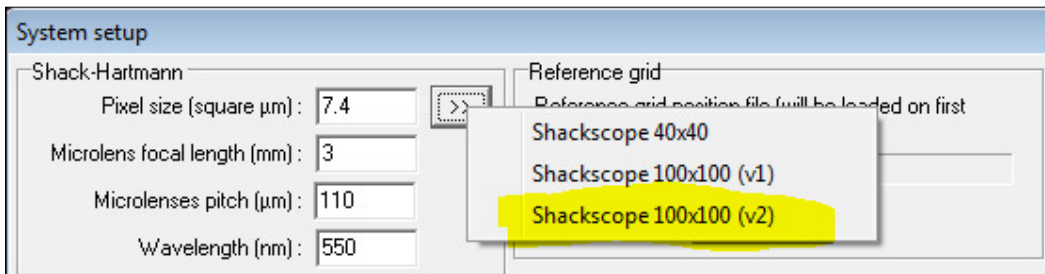
In *Direct show driver* section, select « *ASI1600MM camera* »,



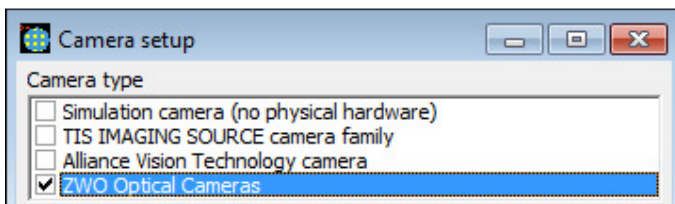
In the « *Shack Hartmann Analyzer software* »



Go into the System setup, and uses the **Shackscope 100x100 (v2)**, this will fill up automatically the system parameters.



In the camera setup, the ZWO optical cameras must be used. The ASI 1600MM camera should be visible if it is connected to the PC:



Then, the use of the shack-hartman is the same as the 40x40 and same documentation applies.