

Cyclope and micro/ μ cyclope seeing monitor System

Installation and user manual

April 20th, 2026 revision



Table of Contents

1	System installation.....	4
1.1	Installation (Cyclope only)	4
1.1	Cables installation.....	8
1.1.1	Ethernet cable (#3).....	13
1.1.2	Power connector and RS232 (#2).....	13
1.1.3	Temperature sensor and humidity connector (#1).....	14
1.2	Installation (Micro/ μ Cyclope only)	15
1.2.1	System cabling.....	19
1.3	System polar alignment.....	20
2	Software.....	24
2.1	PC Minimum requirements	24
2.2	GigaBit Camera driver installation software	24
2.3	Installing the System's control Software	29
2.4	Installing third party camera control software.....	29
3	Using the SeeingMonitor_Cyclop software	30
3.1	Principle of operation	30
3.2	Initializing.....	31
3.1	Main tab.....	35
3.2	General Software Setup.....	36
3.3	Starting measurements	37
3.4	Camera control tab.....	38
3.5	Status tab.....	38
3.6	The plot window	39
3.7	Storage of files produced by the system	42
3.8	Seeing measurement troubleshooting section	45
3.9	TCP IP server data exchange.....	45
4	Front window heating control system (Cyclope ONLY)	46
4.1	Principle	46
4.2	Operation.....	46
5	System maintenance.....	53
5.1	Entrance window cleaning (Cyclope Only)	53
5.2	Inner camera desiccant replacement.....	54
6	Trouble shooting	54
6.1	No star is visible	54
6.2	Exposure time optimization.....	54

6.3	Camera focus questions	55
7	Product terms of use.....	57

1 System installation

This documentation refers to Micro-Cyclope and Cyclope products. The operation is the same, except micro cyclope does not have any internal and external probe to measure temperature and humidity. All chapter are common unless explicitly written.

1.1 Installation (Cyclope only)

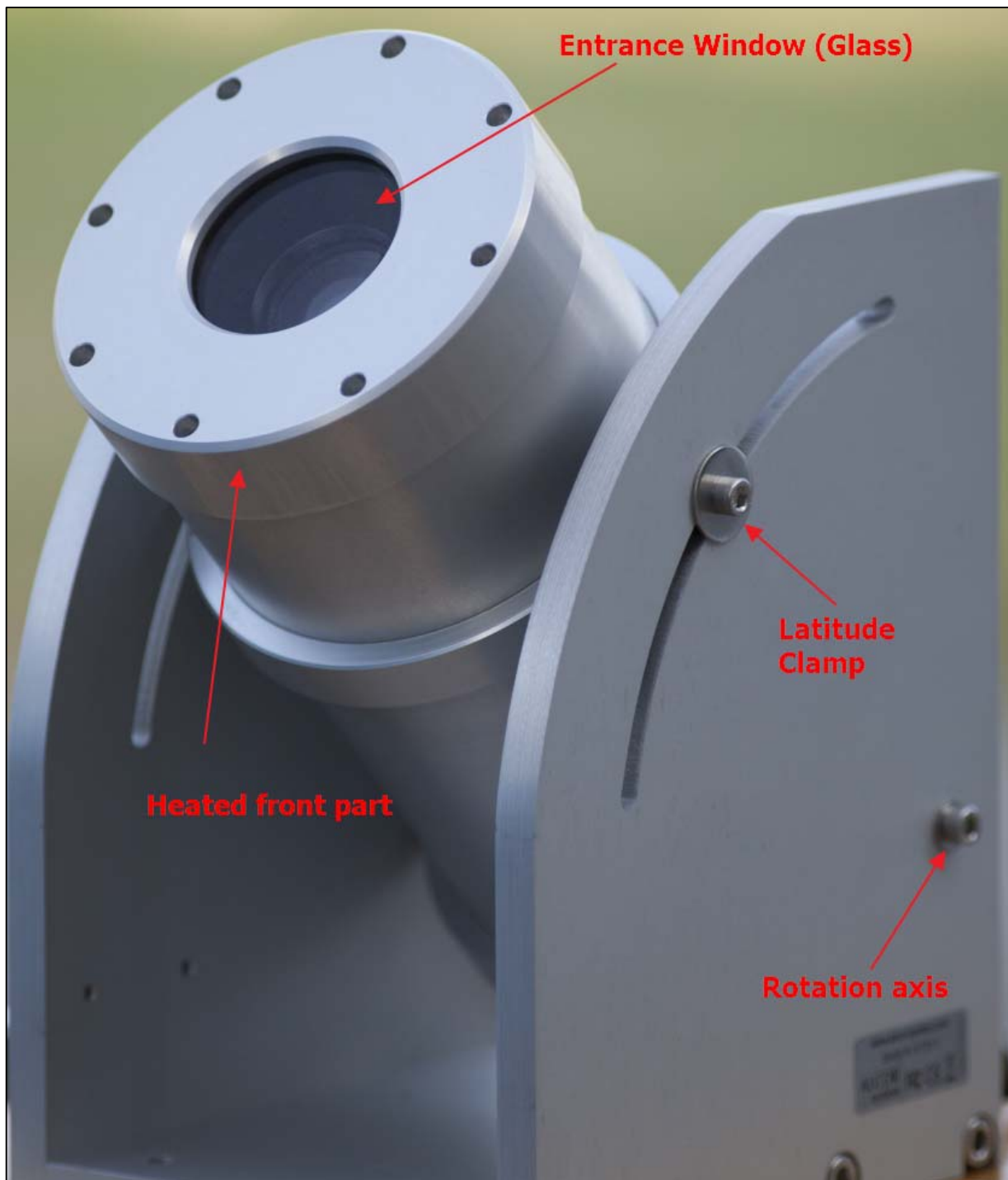


Fig. 1 Overall system view, latitude rotation axis is visible.

The system installation is simple and straightforward.

This system works outdoor, it is totally weather-tight and is installed outside as it comes, no need of a dome or a shelter.

Please do not install the camera near a pollution source (like a chimney). Give as much exposure as possible to the north and avoid obstacles.

This system has heater that can remove external condensation that can occur on the entrance window surface.

The system's tube shall be positioned toward the polar star, this latter has the same elevation of your latitude's place and requires +/- 0.2° positioning accuracy.

The base plate of this system has four Ø8 holes (fig 3) allowing to be attached to a fixed pillar. So we recommend to perform the polar alignment settings first, and clamp the system once for all into a steel or concrete structure once alignment performed.

This system shall not move at all, because of the wind, or building vibrations due to motors or any other vibration source. Put it as far away from building air conditioning systems that may release hot/cold air.

The whole camera weights 10.5 Kg, so ensure that camera attachment is achieved properly.

The North direction is defined by rotating the camera accordingly in latitude and azimuth.

Please perform image capture tests prior attaching the camera to the pole as explained here (§3.1)

To install the camera, only two metric Allen hex set keys are required for M6 (#5) and M8 screw (#6). Allen keys are not provided.

The base plate, as depicted in figure #3 shall be horizontal and this can be checked with a bubble level (tolerance is +/- 2°).

Another table is on top of this table and allows some rotation (around vertical axis) of +/- 6°. So, the base table must be bolted with respect to the north-south axis with some accuracy.

It is advised to simply install the Cyclope where it should be, and orientate it during the night with Polaris star, without attaching/bolting it.

Then, during daylight, mark the 4 holes (yellow holes figure 3) without moving the whole assembly, and then remove the Cyclope and drill attachment holes. This can be either M8 or M6 screws (or threaded rod), or ¼" inch screw with washers and nuts.

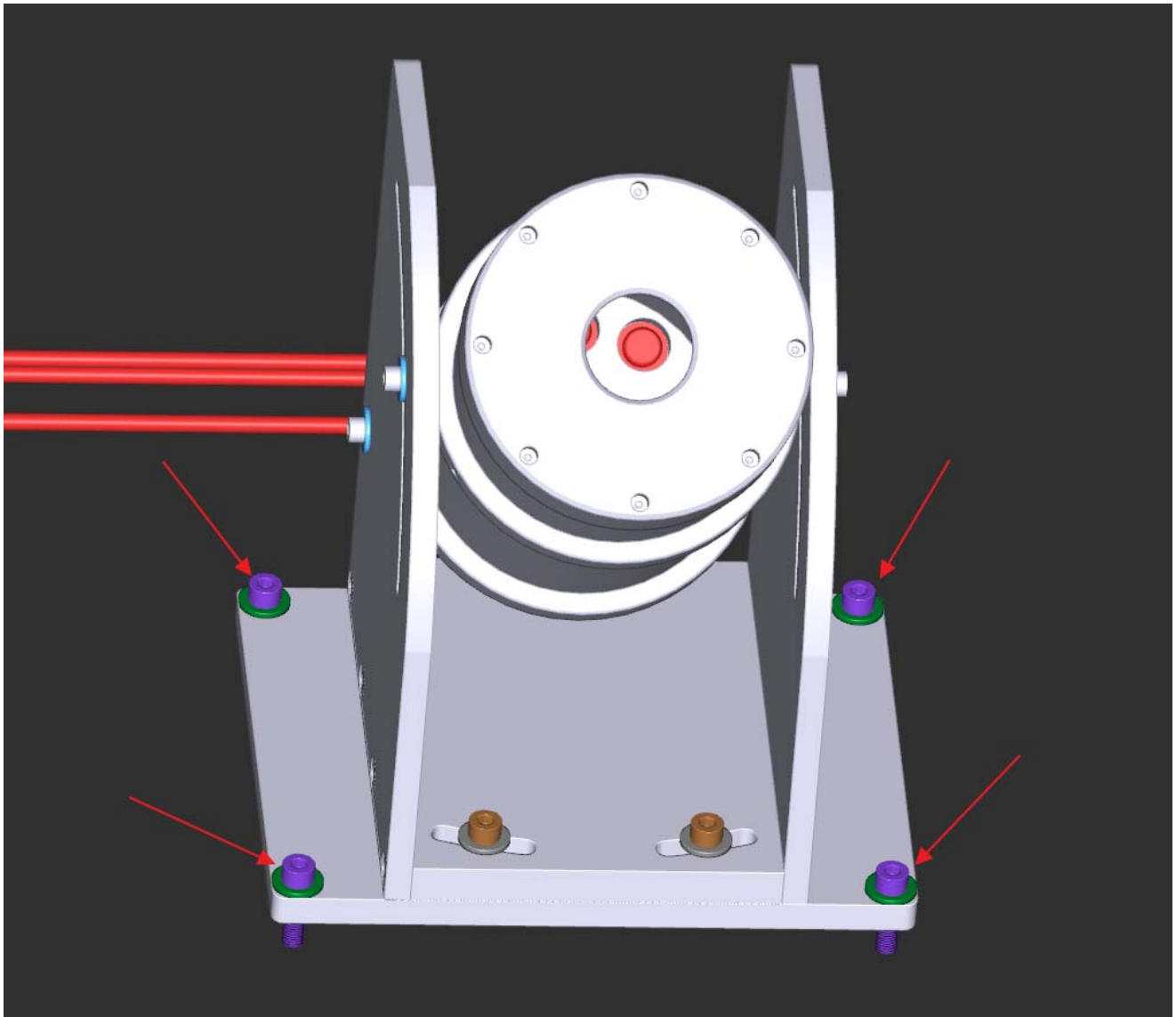


Fig. 2 Position of the four $\varnothing 8$ mm holes to attach the base table system to a stable structure or assembly.

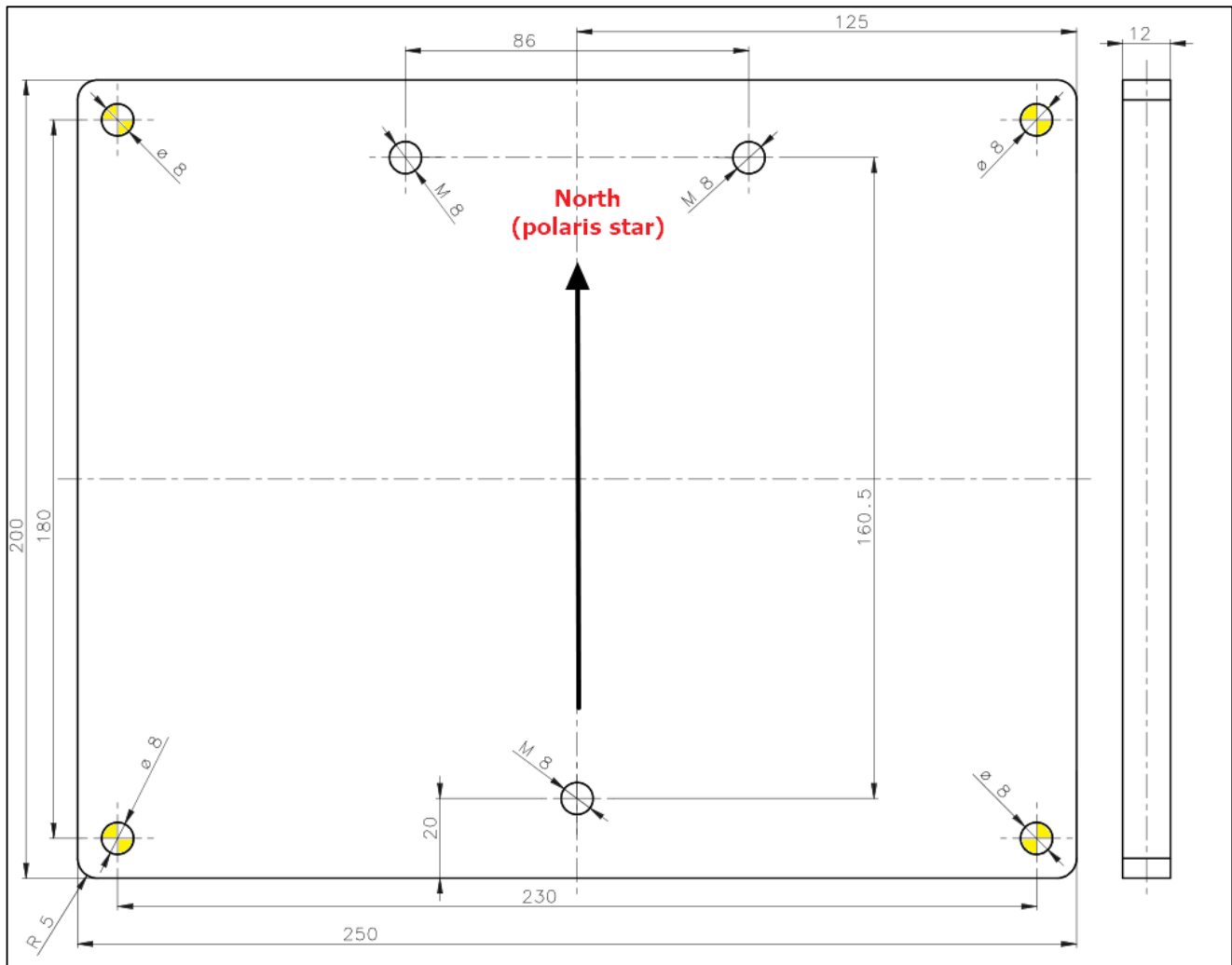


Fig. 3 Position of the 4 $\varnothing 8$ holes (in Yellow) to attach the base table system to a stable structure, 180x230mm 8 mm holes diameter. Vertical axis is North-South, with North on top of the drawing. Azimuth positioning tolerance with respect to the North is $\pm 6^\circ$ (Units are mm)

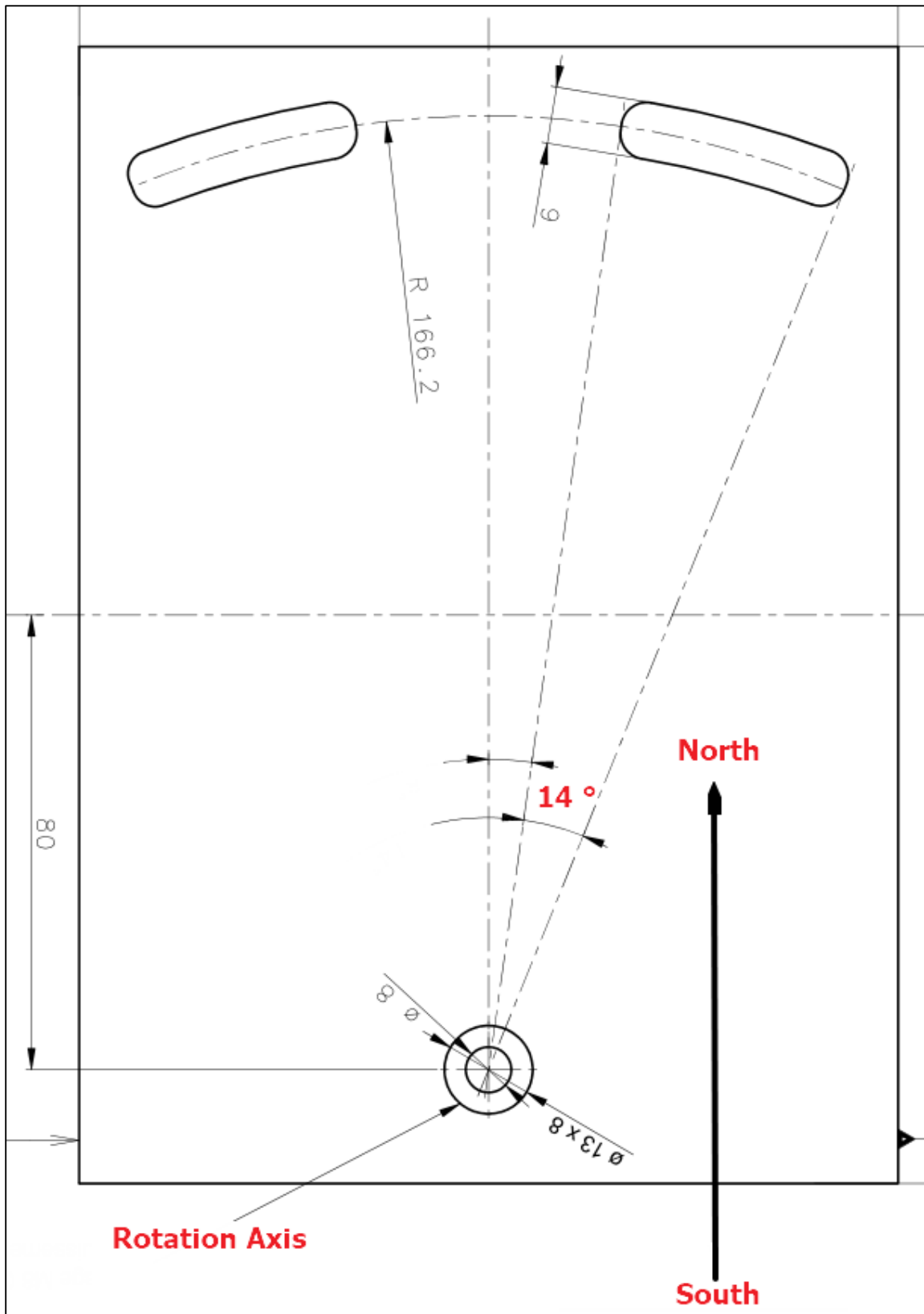


Fig. 4 Upper rotating table. Grooves are 14° elongation, allowing fine tuning of +/- 6° (units are mm)

1.1 Cables installation

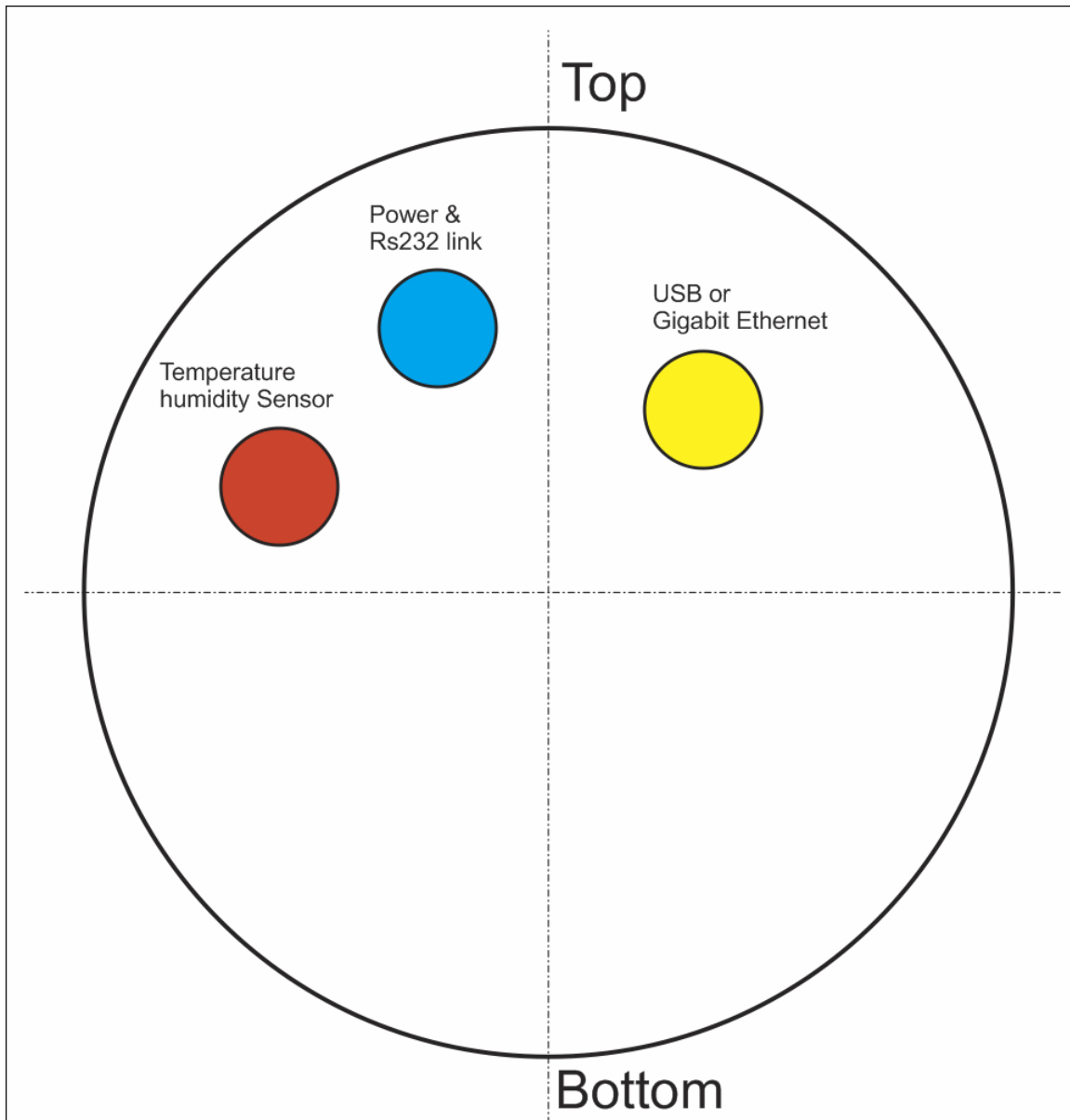


Fig. 5 Position of the three connectors according to their function

At the backside of the tube, three waterproof connectors are present, leave enough free space at that location to be able to install and allow the cables to run out (see fig 3).



Fig. 6 Three cables, one is going to the temperature and humidity sensor, and other goes to inside a building.

Connectors keying and different amount of pins and gender are preventing from connection errors. However, user must look at the number of connector pins at the end of the cable before connecting the camera, in order to avoid forcing the pins and damage the camera connector.

Connector see fig. 2	Cable Number	Role	Gender (on camera)
RED	#1	Temperature sensor	Female 5 pins
BLUE	#2	Power connector and RS232 data link for weather condition and front heating control	Male 4 pins
YELLOW	#3	Camera data link Gigabit Ethernet link to camera	Male 8 pins

Let the cables to go straight from the camera. If the cables shall be bent, respect a minimum curvature radius of 100 mm. Those cable can go through a wall, or pipes. In that case just avoid the cable to pass underneath water despite the cable can sustain rain and snow, but not designed to be installed under water forever.

The waterproof connectors connect as follows:

- Identify the number of connector pins of the camera, its type (male / female)
- Identify the number of pins of the connector cord and match.
- Identify the key pin inside the camera connector and the key at the connector cord side.
- Apply a rectilinear motion. **If insertion force strength persists please repeat steps for locating the pin number and key. Excessive force applied to connector can cause the destruction of the connector or a bad connection can damage the camera. In case of damage due to trials to attach cable to the wrong connector kind, warranty could be canceled.**

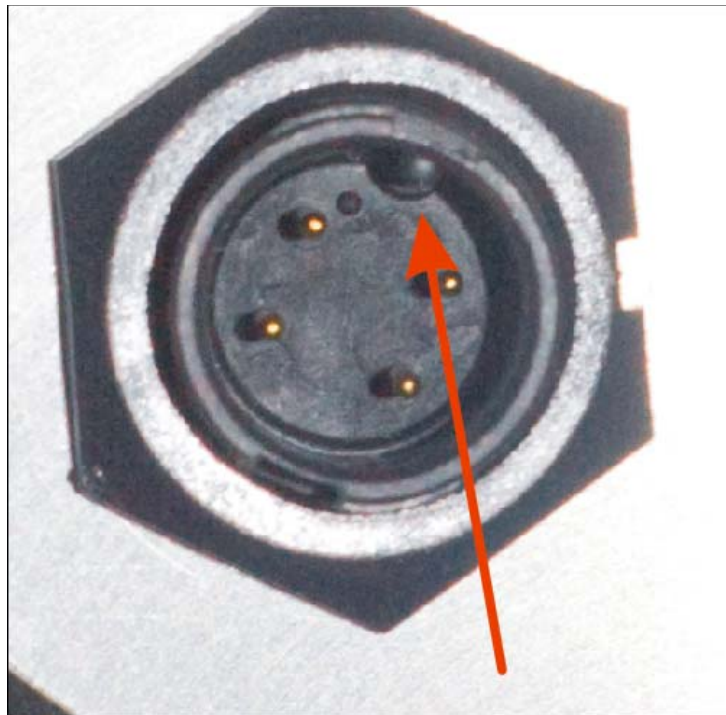


Fig. 7 Key one of the three connectors (power connector).



Fig. 8 *Push the connector straight*



Fig. 9 *Then turn the connector's collar in clockwise fashion*

1.1.1 Ethernet cable (#3)

Ethernet connector that goes to a PC or to an Ethernet switch, both must be GigaBit compliant. If 100 Mbits is used, the image will not go through to the PC. **All chain that goes to the PC must be Gigabit compliant** (PC, Switch, routers) otherwise image will not be delivered to the PC.

1.1.2 Power connector and RS232 (#2)

This is providing power to the camera and RS232 link for weather condition and entrance window heating control.



Fig. 10 The RS232 and power cable

The RS232 connector is a DB9 connector type female and attaches to the serial port of the PC. Usually new PCs are not equipped with serial port, and must be equipped either:

- By a RS232 – USB converter (it can be a very moderate cost, FTDI, ATEN devices, please avoid Prolific, there are not reliable)
- By RS232 PCI card (Low cost device, not suitable for laptops)
- By Serial to Ethernet (MOXA devices, very reliable and professional device http://www.moxa.com/product/nport_device_server_1.htm) Product type is Nport.

The RS232 control link is **mandatory, and must** be connected to your PC. This gives access to:

- Front entrance window heating control, temperature and humidity thresholds that will turn on and off the heating control.
- Setting the heat power to be applied to the front entrance window.
- Reading temperature of different sensors inside and outside camera, the system has :
 - one external temperature sensor
 - one internal temperature sensor
 - one internal humidity sensor
 - one external humidity sensor
 - one temperature sensor measuring the temperature of the front window

So this is a mandatory control way for the system. Please connect the RS232 link to your PC, do not leave it unconnected.

1.1.3 Temperature sensor and humidity connector (#1)

It is a 5-pin connector. The probe located at the end of the cord will be attached to one of the fork of the system, **and always with two set Ø4mm screws with the direction given in the next frame and horizontally. It put upside down, this can destroy the sensor and warranty will not apply.**

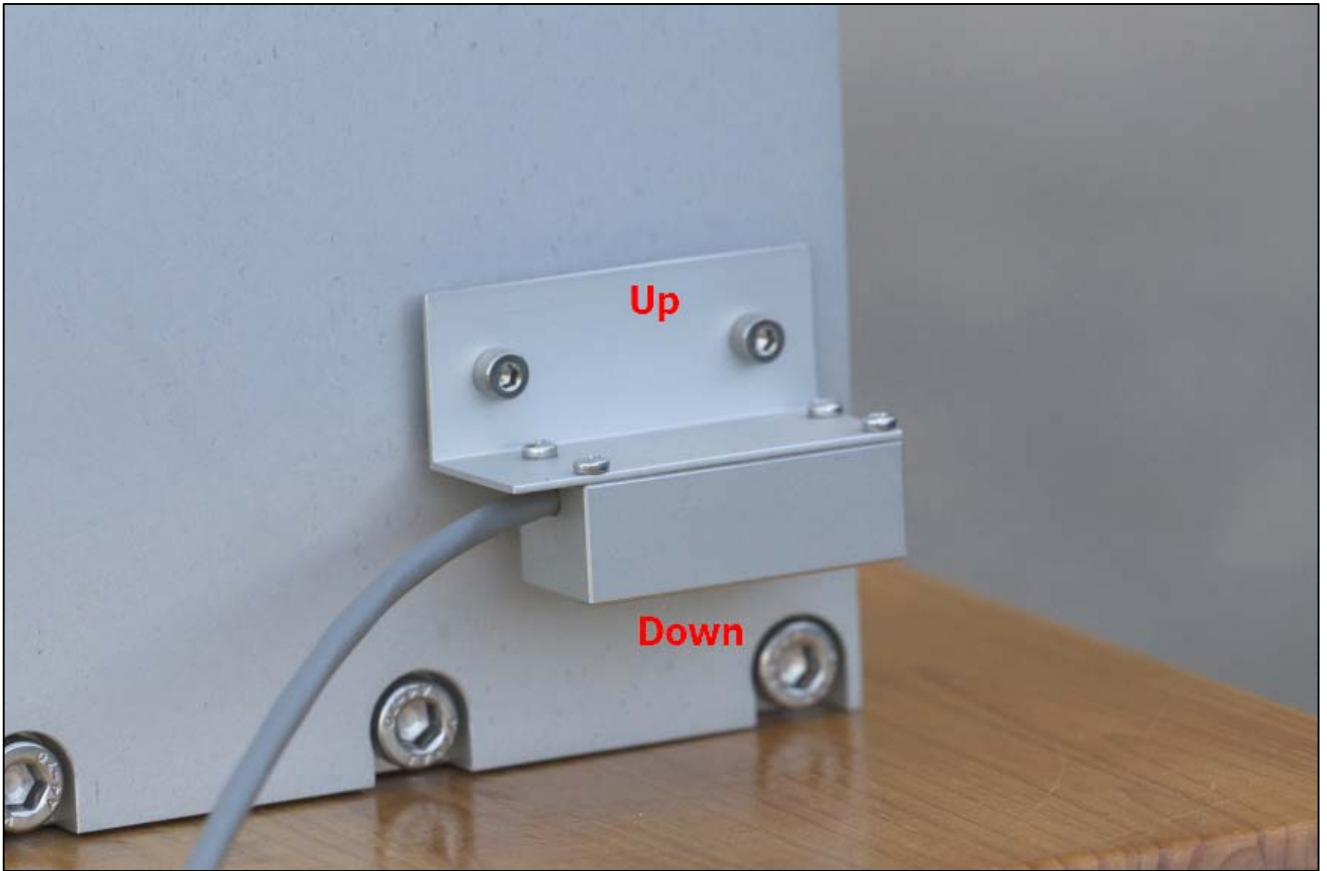


Fig. 11 Up / down and horizontal temperature sensor and humidity directions for installation: never put the sensor upside down compared to this picture

System power consumption

The system works under 24V and consumes 110mA when front window heat power is not activated. When the heating is enabled, and set to 100% duty cycle, the total power consumption is 1.95 A.

1.2 Installation (Micro/ μ Cyclope only)



Fig. 12 Micro-cyclope (μ Cyclope)

The system installation is simple and straightforward.

This system works outdoor, it is totally weather-tight and is installed outside as it comes, no need of a dome or a shelter.

Please do not install the camera near a pollution source (like a chimney). Give as much exposure as possible to the north and avoid obstacles.

As opposed to his “brother”, the Cyclope product, this system has NO heater that can remove external condensation that can occur on the entrance window surface.

The system’s tube shall be positioned toward the polar star, this latter has the same elevation of your latitude’s place and requires $\pm 0.2^\circ$ positioning accuracy.

The base plate of this system has four $\varnothing 10$ holes (fig 13) allowing to be attached to a fixed pillar, or to a concrete structure. We recommend to perform the polar alignment settings first, and clamp the system once for all into a steel or concrete structure once alignment performed.

This system shall not move at all, because of the wind gust, or building vibrations due to motors or any other vibration source. Put it as far away from building air conditioning systems that may release hot/cold air.

The whole camera weights 5 Kg, so ensure that camera attachment is achieved properly.

The North direction is defined by rotating the camera accordingly in latitude and azimuth.

Please perform image capture tests prior attaching the camera to the place it should be attached to.

To install the camera, only one 17 mm flat wrench hex set keys is required. Allen/wrench keys and tooling are not provided.

The base plate, as depicted in figure #13 shall be horizontal and this can be checked with a bubble level (tolerance is +/- 2°).

Another table is on top of this table and allows some rotation (around vertical axis) of +/- 13°. So, the base table must be bolted with respect to the north-south axis with some accuracy.

It is advised to simply install the μ Cyclope where it should be (final place), and orientate it during the night with Polaris star, without attaching/bolting it in definitive way.

Then, during daylight, mark the 4 holes (yellow holes figure 3) without moving the whole assembly, and then remove the μ Cyclope and drill attachment holes.

Base plate can be attached by 130x180 mm rectangle pattern screws, that goes through the structure that will received the μ Cyclope.

This can be either M10, or 3/8" inch screw diameter (or threaded rod), with washers and nuts (or equivalent).

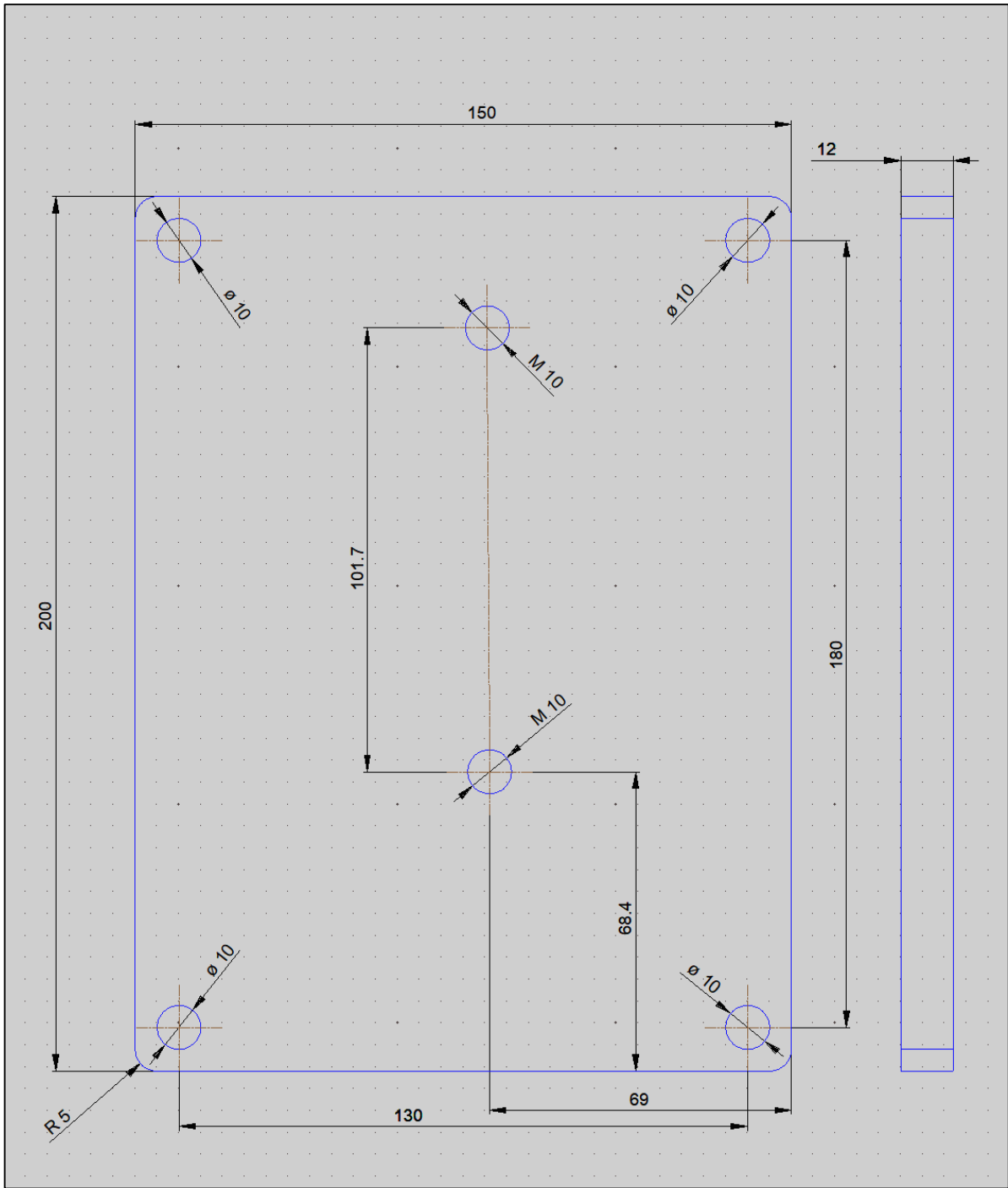


Fig. 13 μ Cyclope Base plate drawing - North direction is up (units are mm)

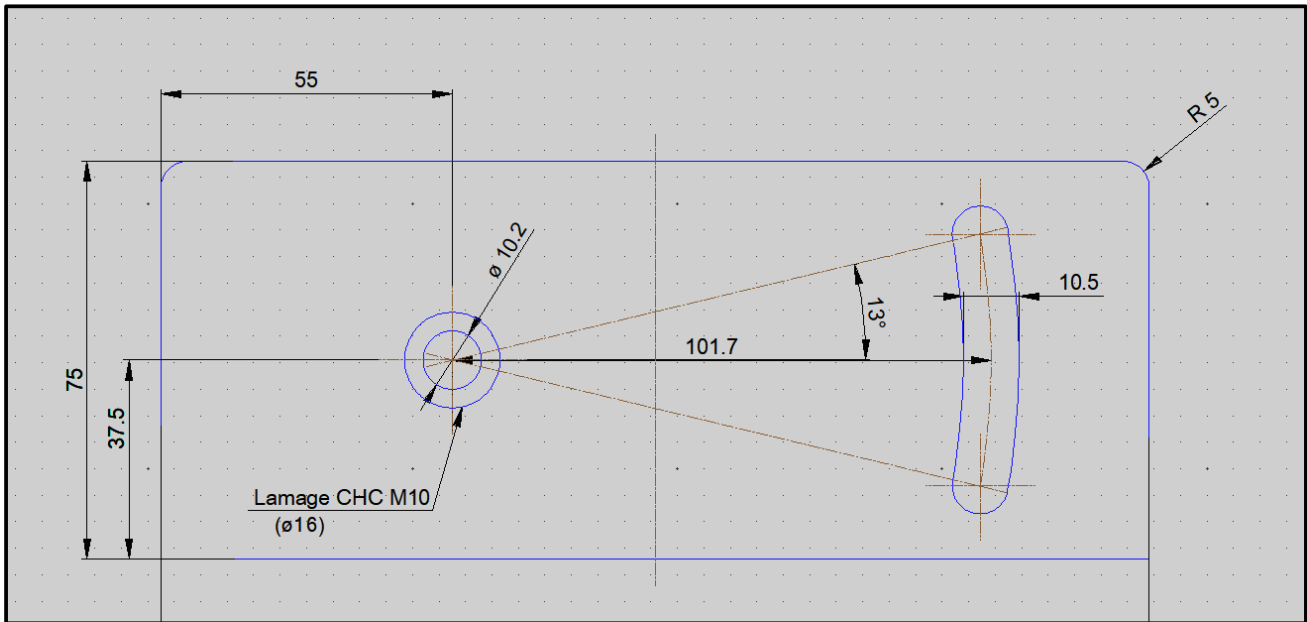


Fig. 14 - Azimuth tunable table; +/- 13 ° span.

1.2.1 System cabling

The system cabling is quite straight forward. The system comes with a 20 m ethernet cable, at one side it is tied to the camera and goes through with a cable gland. It cannot be detached from the camera, this is not a connector, and please attempt to do so, this could invalidate warranty.

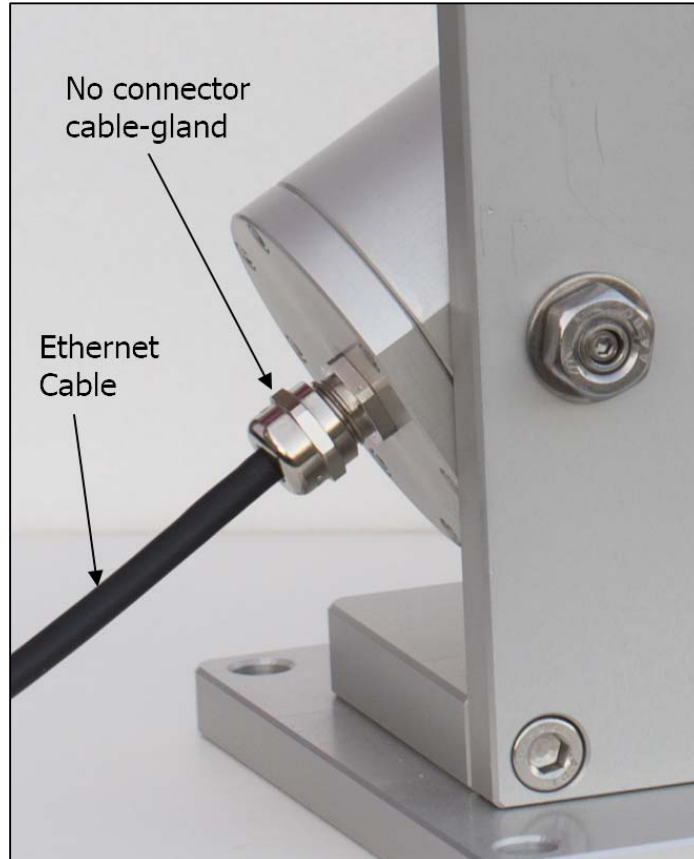


Fig. 15 Cables exiting from *μ*cyclope

At the other side, this ethernet cable should be connected to the POE injector. This later must be installed indoors, never outdoors. Pay attention to the connector side to be inserted, this should be at the opposite with respect to the 48V power connector. The camera is POE powered in this way. On the other side of the black box, an Ethernet cat5e/6 cable must be attached (not provided), and connected to the computer. It is really advised (but not mandatory) to attach this cable to the second Network Interface Card (NIC), and not have the camera data flowing into a standard LAN.

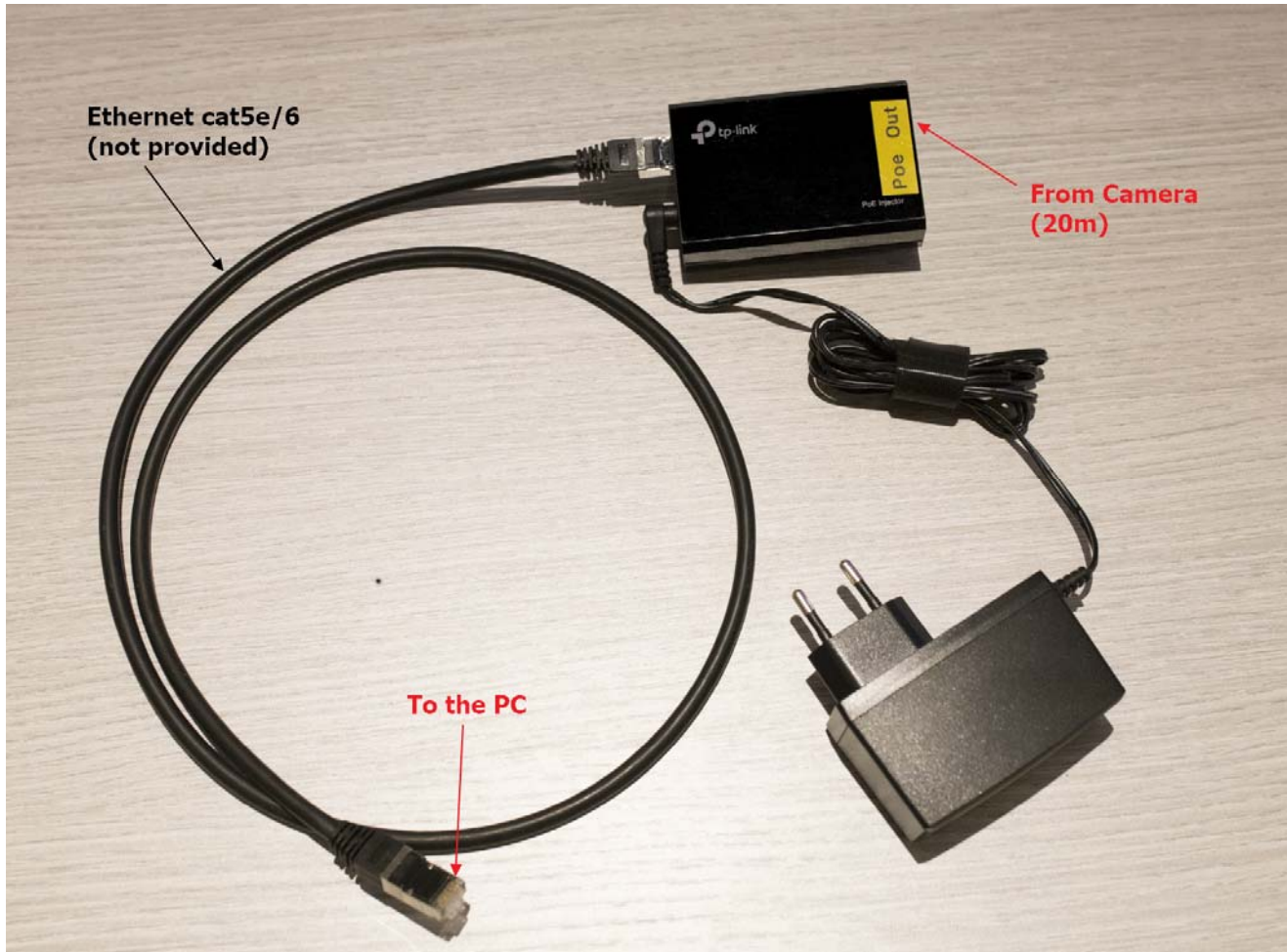


Fig. 16 POE injector and connection layout.

Mixing up ethernet connector sides, (i.e) putting the Poe Out to the PC and camera to the remaining connector cannot damage any attached devices, but the camera will simply unable to operate.

1.3 System polar alignment

The system shall aim at the polar star, so two degree of freedom can be used to do so: latitude and azimuth axis. The system can be set roughly with a compass during the day toward the north, if magnetic local declination angle is subtracted, then a laser during the night to allow first step alignment. In the end, fine alignment shall be performed with the use of the software and the image from the camera.

The field of view of the system is $3.6^{\circ} \times 2.5^{\circ}$

Do not mix up the Polaris star with another star, otherwise, the star will be either too faint, will not stay for long into the camera's field of view and lead to false/incomplete measurements.

To align the system in azimuth direction, just rotate the base plate.

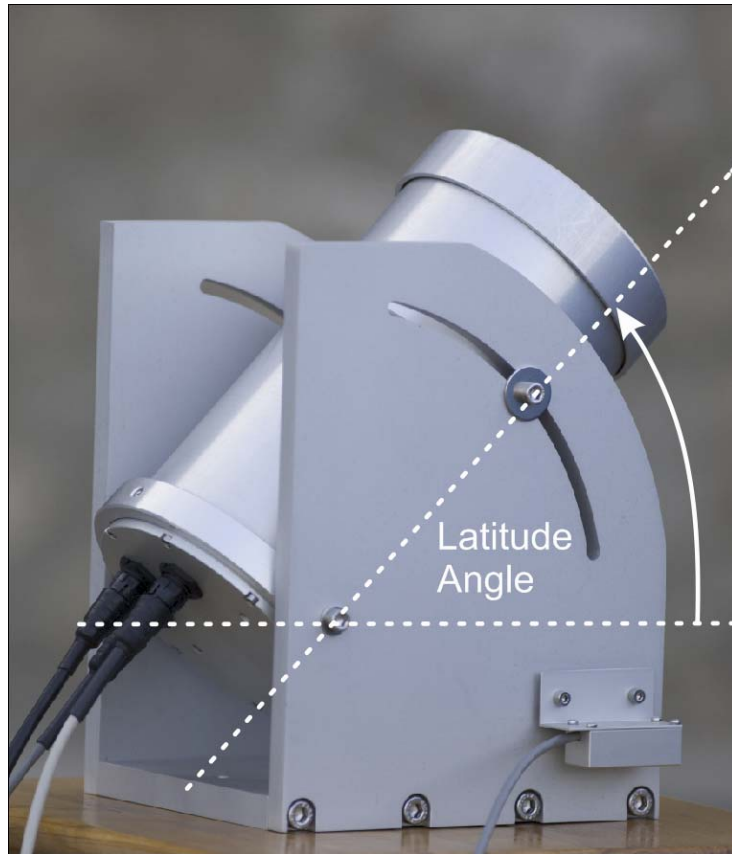


Fig. 17 The angle depicted above has the same value of the local geographical latitude (Cyclope)



Fig. 18 The angle depicted above has the same value of the local geographical latitude (μ -Cyclope)

To align it in the latitude direction, unclamp the two screws shown above with a #5 Allen wrench. One screw is rotating and another goes over the groove.



Fig. 19 Latitude clamp, use M6 Allen Key to release it (Cyclope)



Fig. 20 Latitude clamp, use 17 mm flat wrench to release it (μ -Cyclope)

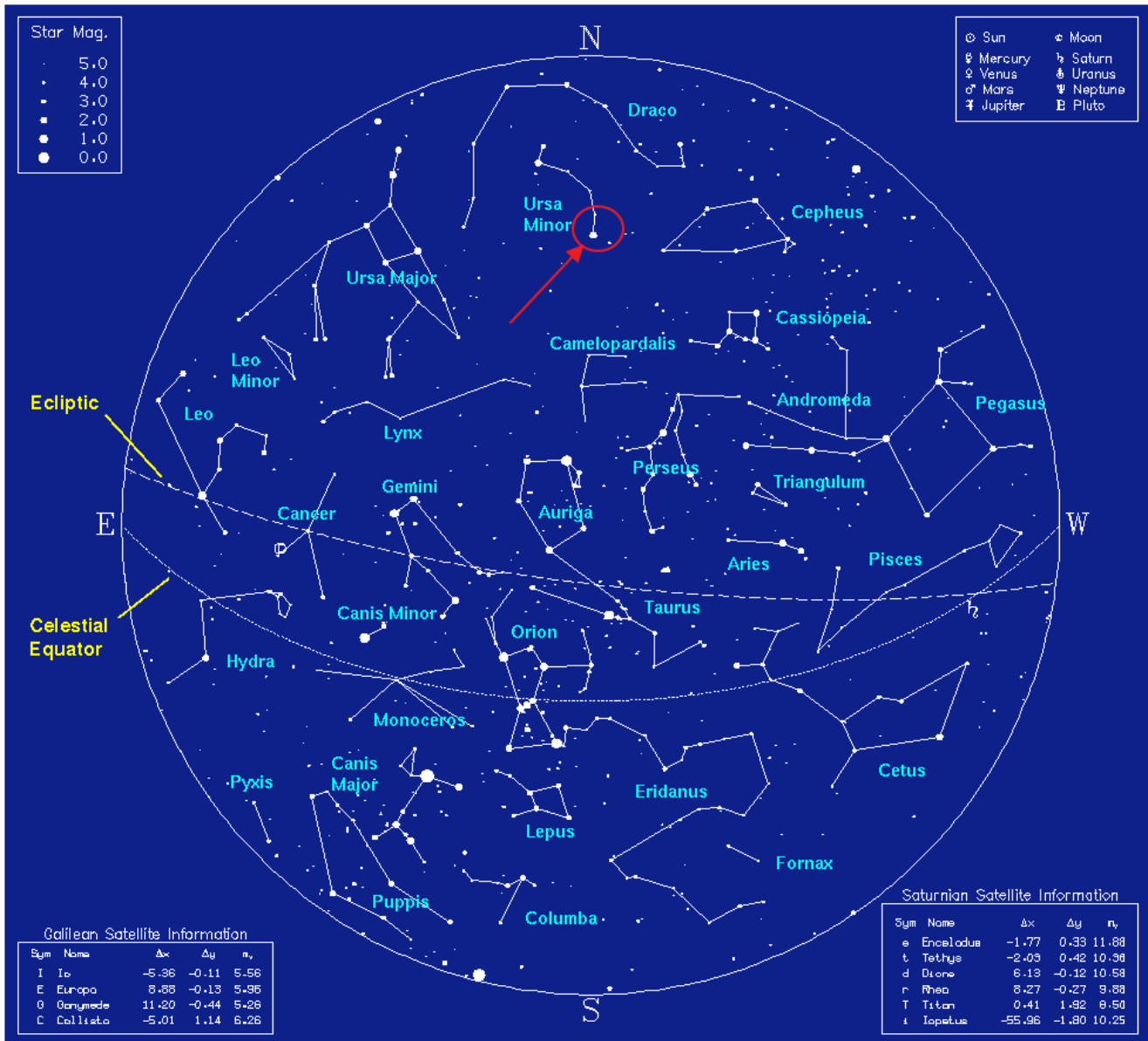


Fig. 21 Sky map showing which star the system must be aimed at. This is the magnitude 2 star, Alpha Polaris from the Ursa Minor constellation.

Please, never aim the system at the SUN, this can damage the camera inside the system.

2 Software

2.1 PC Minimum requirements

This documentation is addressing software **version 1.8.46** of **SeeingMonitor_Cyclop.exe**

This system needs a PC to be connected at, to be able to work:

- Intel I5 or better CPU Processor system.
Any system that has a CPU benchmark above index 3500, see here <https://www.cpubenchmark.net/>
- 1024x768 display
- Operating System : Windows 7, 8.1 or 10
- Gigabit Ethernet 1000 interface for Gigabit camera (mandatory requirement)

The system embeds a camera into the tube aiming at the polar star.

System powers up by just plugin into the main's AC, and wait 20s to complete mini-cyclope from starting up.

2.2 GigaBit Camera driver installation software

Please run the *gigecam_setup.exe* file.

The file can be obtained from our website following this link:

http://www.alcor-system.com/common/MiniCyclop/qigecam_setup.exe

This installs a new software layer bound to the PC network adapter.

Upon installation completion, a new icon appears in the system's tray.

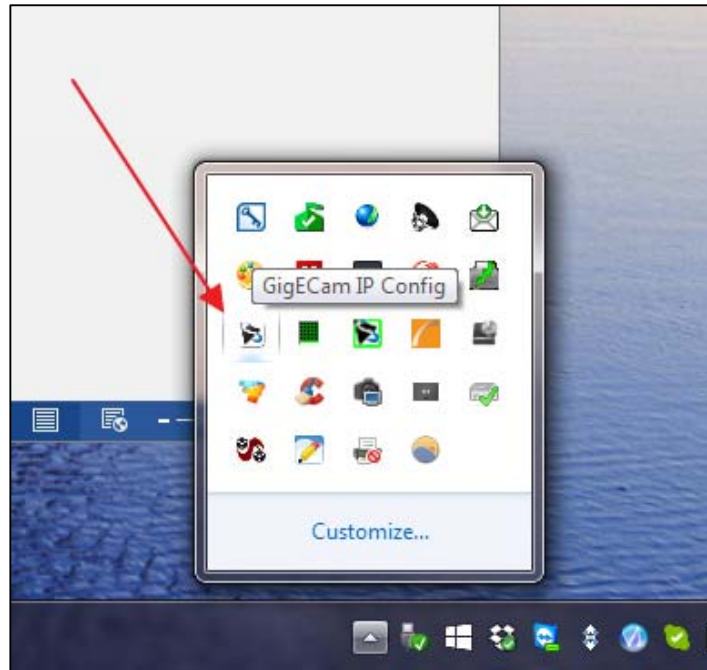


Fig. 22 The arrow shows the icon of the GigECam camera IP setup panel

The camera can be connected (or can be connected during installation process), the next form shows up:

Device	Serial Number	MAC Address	IP Address
1st NIC @ 1 Gbit/s [192.168.1.52] MTU=9000			
2nd NIC @ 1 Gbit/s [192.168.2.11] MTU=1500			
DMK 33GP031	08120225	00074821E0C1	192.168.2.160

Device Info | IP Configuration | User-defined Name | Firmware Upgrade

IP Configuration Procedure

- Persistent IP
- DHCP
- Link-Local Auto IP

Persistent IP Configuration

IP Address: 192.168.2.160

Subnet Mask: 255.255.255.0

Default Gateway: 0.0.0.0

Apply

Fig. 23 This is the form that informs about the current IP camera address and allows to change it

By default, the system is delivered (factory tuned) with a camera that has the following persistent IP address of **192.168.2.160**

This address is suitable for networks that are like 192.168.2.x, where x ranges from 0 to 255.

For other networks, or if the address is not suitable to your network, press "**Configure >>**"

The camera can have his IP address set by DHCP mechanism, where the IP address is set by a router.

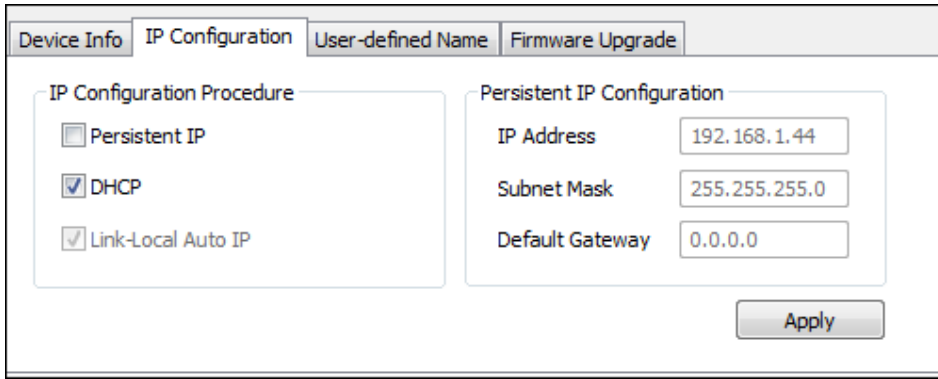


Fig. 24 DHCP setup

Or persistent IP address can be used according to you network. Please if you do not feel confident with this, ask your network administrator to help you out.

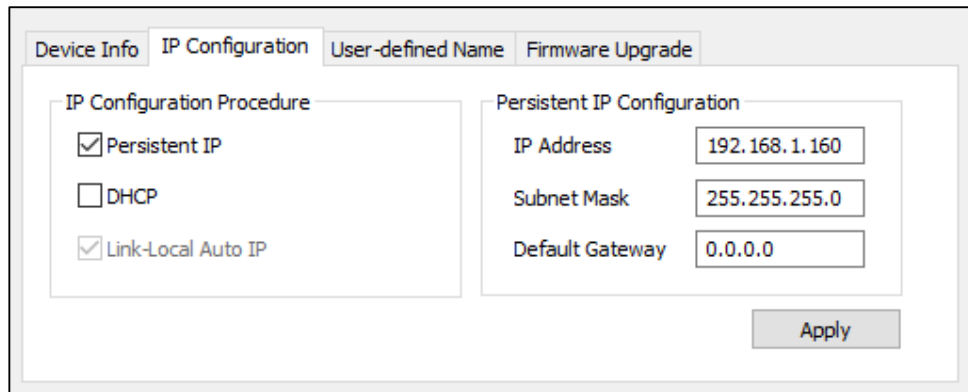


Fig. 25 Persistent IP setup example

If this mark appears, just do a power cycle to the system.

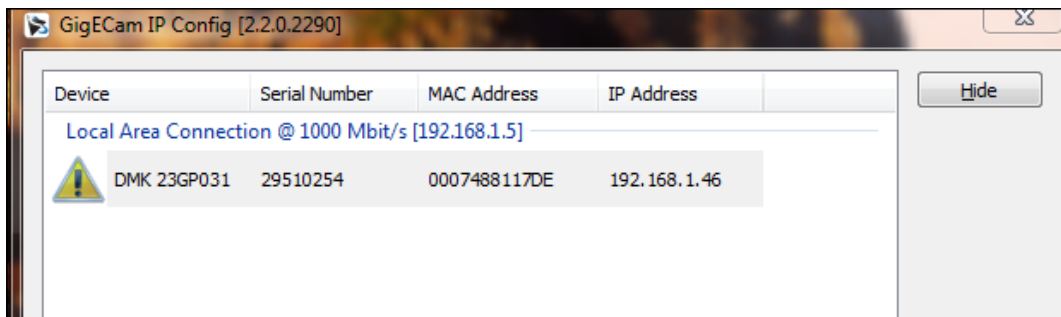


Fig. 26 Power cycle the system to get a valid camera icon

To improve the reliability of the data link, the Jumbo packed frame must be enabled, and set to 9014 bytes. Make a desktop shortcut called "***ncpa.cpl***" to access easily to the network card interfaces (NIC). Go to the ***properties*** of the NIC, and then click "***configure***" and then go to the advanced tab

In the property, look for "Jumbo Packet" or "Jumbo Frame" and set it to 9014 bytes

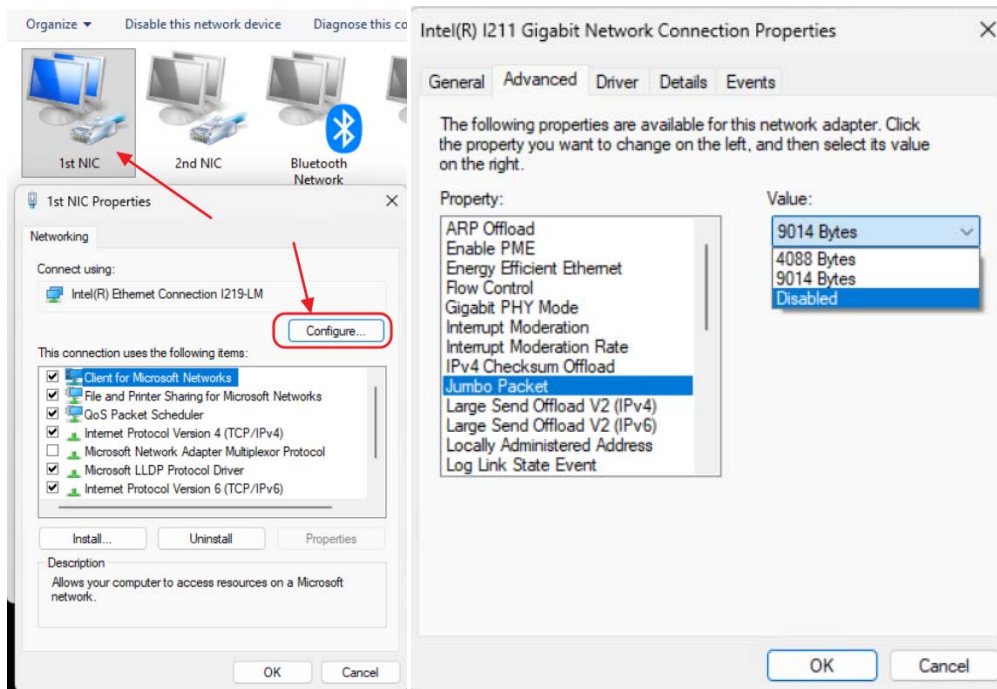


Fig. 27 NIC board setup, set up the Jumbo packet to 914 Bytes

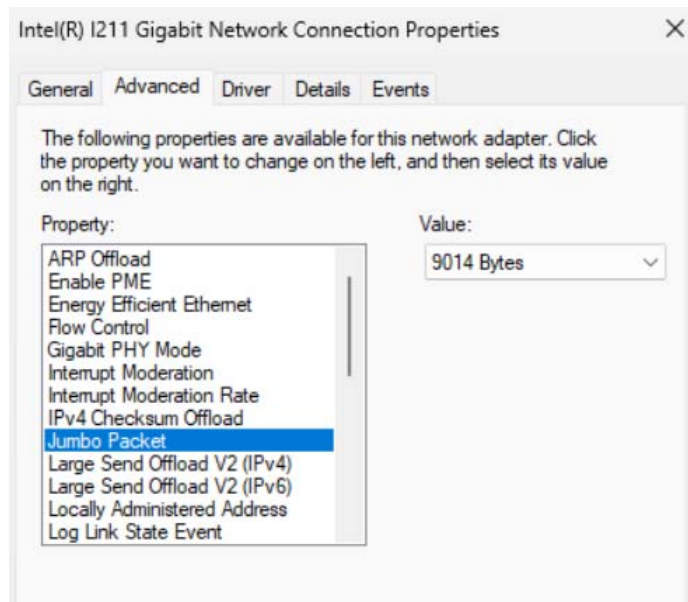


Fig. 28 Jumbo packet is now set to 9014 Bytes

To test that this setting is set properly, open a CMD command window and ping the PC with this command :

```
PS C:\Users\test> ping 192.168.1.12 -l 9014
```

```
Pinging 192.168.1.12 with 9014 bytes of data:
Reply from 192.168.1.12: bytes=9014 time=17ms TTL=64
Reply from 192.168.1.12: bytes=9014 time=18ms TTL=64
Reply from 192.168.1.12: bytes=9014 time=10ms TTL=64
```

If the system does not Jumbo Packet it will return a “timeout”

```
PS C:\Users\test> ping 192.168.1.49 -l 9014

Pinging 192.168.1.49 with 9014 bytes of data:
Request timed out.
Request timed out.
```

Despite a regular ping will work:

```
PS C:\Users\test> ping 192.168.1.49

Pinging 192.168.1.49 with 32 bytes of data:
Reply from 192.168.1.49: bytes=32 time<1ms TTL=128
Reply from 192.168.1.49: bytes=32 time<1ms TTL=128
Reply from 192.168.1.49: bytes=32 time<1ms TTL=128
```

2.3 Installing the System's control Software

The software must be downloaded here:

http://www.alcor-system.com/common/MiniCyclop/setup_cyclop.exe

This is the software used to control the system click on "**setup_cyclop.exe**" and follow instructions

Installation is quick and trivial. Please accept all installation modules.

The software creates an icon to your desktop. We must double-click it to start the camera control software.



Fig. 29 Application's icon in the desktop

2.4 Installing third party camera control software

IC-Capture software can be used to control the camera, but this is a basic test software, and does not have the ability to compute any seeing figure that can do **SeeingMonitor_Cyclop** software. Nevertheless, it can be useful to debug camera link, or to polar align the system.

It comes along with the "**setup_cyclop.exe**" and is installed while this installation process takes place.

Warning: with IC-capture, many more setting of the camera can be accessed, SeeingMonitor_Cyclop focuses on setting camera parameters for measuring the seeing.

Do not change the GAMMA setting of the camera with IC Capture, or if so, put/leave it to 100.

3 Using the SeeingMonitor Cyclop software

This software is fairly intuitive; the documentation will focus on features that are considered difficult to use, and about the startup procedure.

3.1 Principle of operation

A camera embedded inside this system is aimed at [the polar star](#) from the Ursa Minoris constellation. This star has two benefits, it is moving around a circle that has a radius of 0.75° , and is present inside the field of view during a 24 hours rotation of the earth, meaning that no tracking is required. It is a magnitude 2 star, and is bright enough, so that its position can be measured 50 times per seconds, using a $1/125$ sec exposure time with a green filter (550 nm).

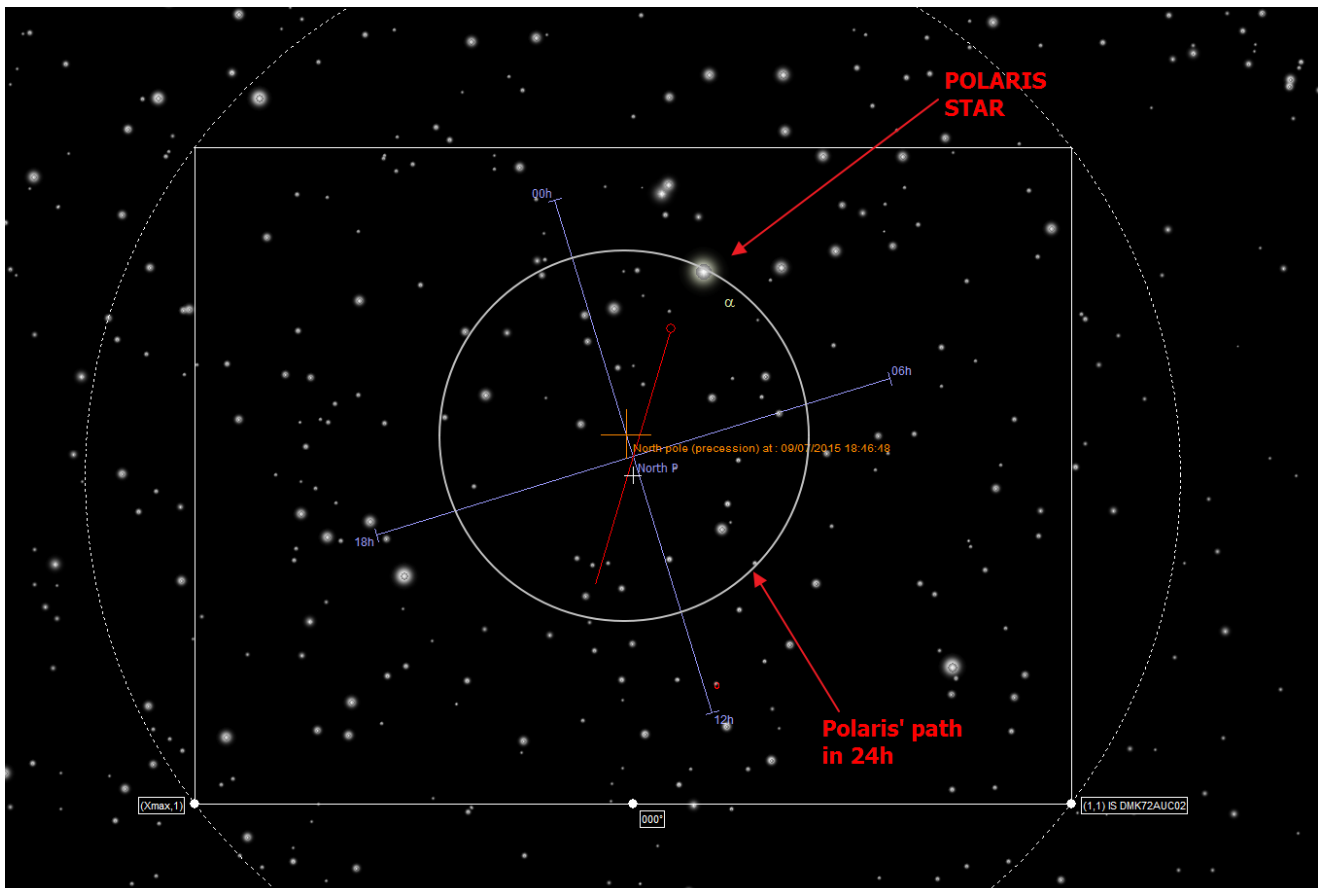


Fig. 30 Alpha Ursae Minoris (Polaris) path that fist well inside the camera's field of view ($3.6^\circ \times 2.5^\circ$).

The star's tip tilt motion that is measured 50 times per second, and the software computes the resulting seeing figure at the place where the star is located, and retrieves the value of an equivalent zenith seeing.

Using the polar star is possible in geographic location from latitude 90° North down to latitude 25° North.

For other places, another star needs to be aimed at, and consecutively sidereal tracking must be enabled, and star be changed when too far away from the zenith. In that case a [DIMM](#) system is more suitable rather than a “Cyclope” system.

3.2 Initializing

First initialization shall take place in the night and clear skies are required, and the camera is aimed roughly to Polaris star using azimuth and elevation freedom degrees offered by this system.

Before starting the **SeeingMonitor_Cyclop** software, be sure the camera is not used by another software. If the camera is not properly attached to the PC and or driver not installed properly, this message can pop up, and the application will close. So please check cables, drivers and power. Try with IC-Capture.

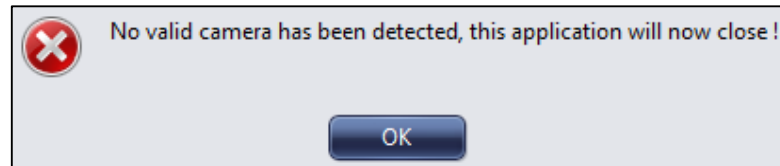


Fig. 31 No camera is attached and detected by the software

If the link to the camera is successful, this window shows up.

The red circle and square is the position of the brightest star in the field, which should be Polaris.

The yellow large circle, shows the Polaris' path overtime, and Polaris must be located into the “expected star position”.

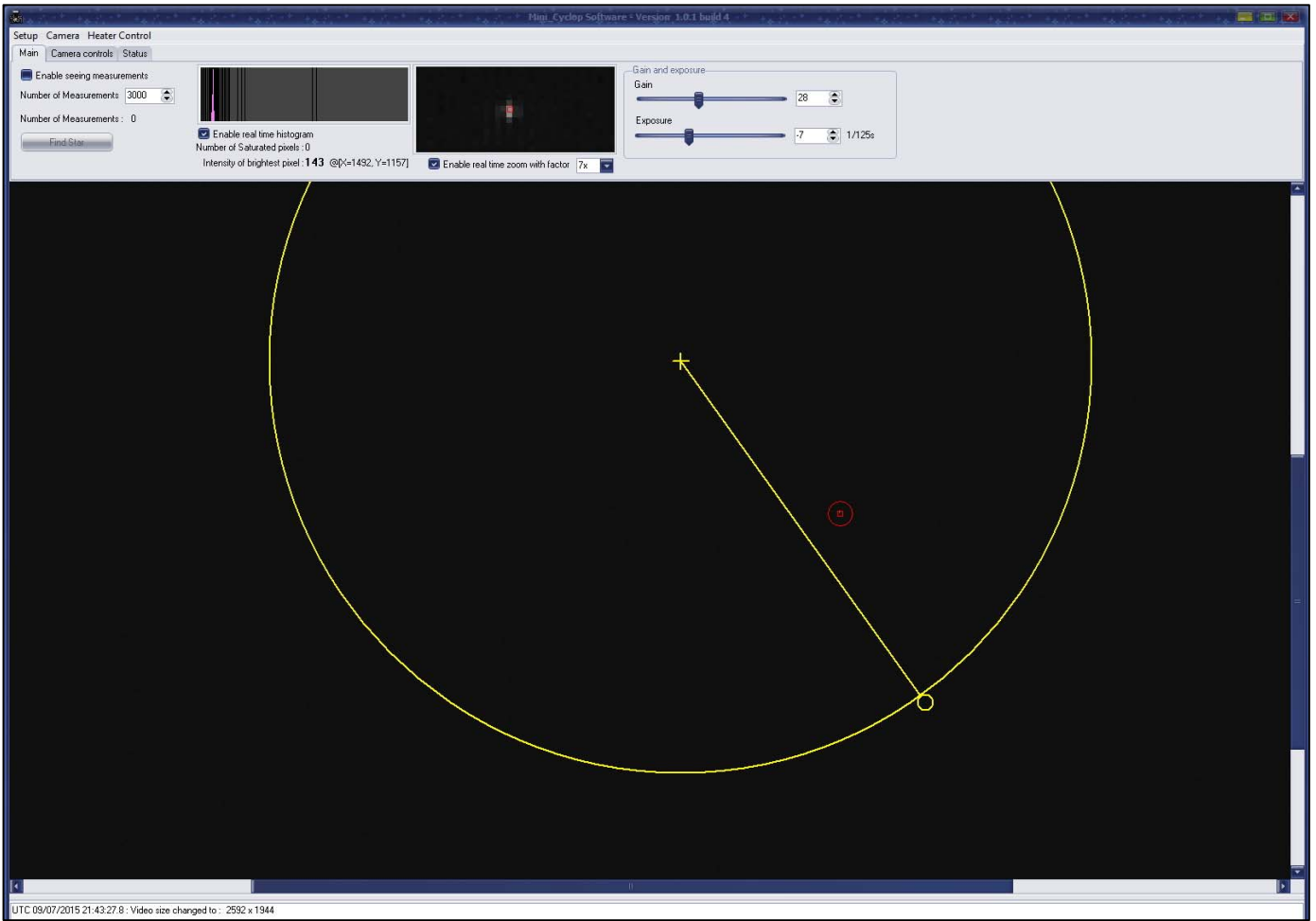


Fig. 32 The yellow cross is where the polar axis of the earth must be located in the image

The typical exposure time for Polaris is 1/125sec and camera gain must be set to the first half part of the range.

The star must be sharp and have only several pixels of size, and must never be a big dot, or donut shape. The system focusing is factory achieved, and user should not do it nor improve it.

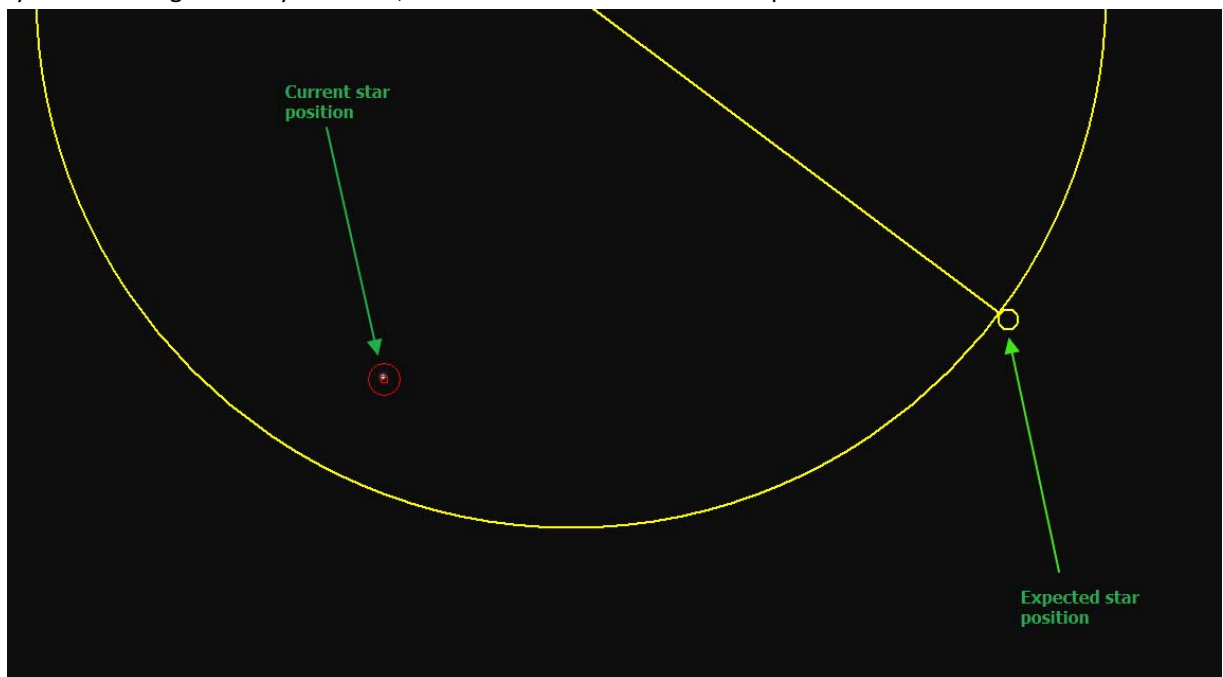


Fig. 33 Polaris to be moved toward the expected star position

Ideally, the system shall be moved very smoothly (azimuth and elevation), so that the Polaris star (red circle) goes into the yellow circle, it does not need to be exactly centered with respect to the yellow circle, it can be off by 20 pixels. The idea of this adjustment, is to have always the Polaris star inside the field of view of the camera, and never stop the measurement because the star leave the field of view. So do not waste too much time in setting this too perfectly, this will not have any impact on the measurements.

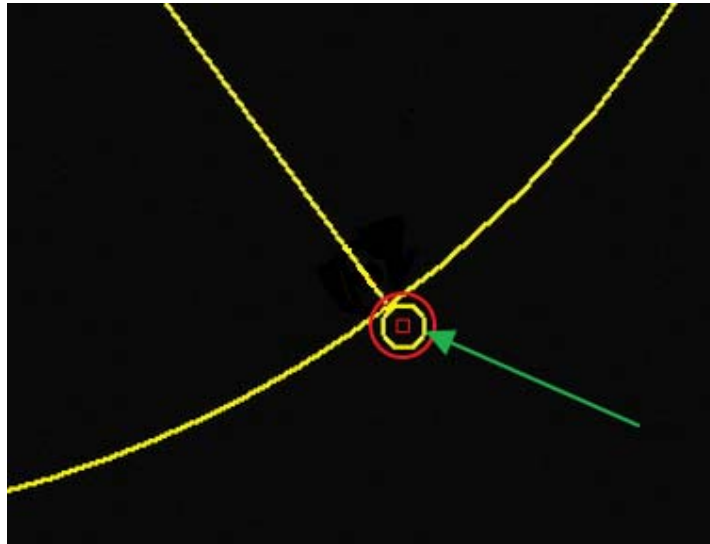


Fig. 34 Polaris located at the expected position (perfect case distance)

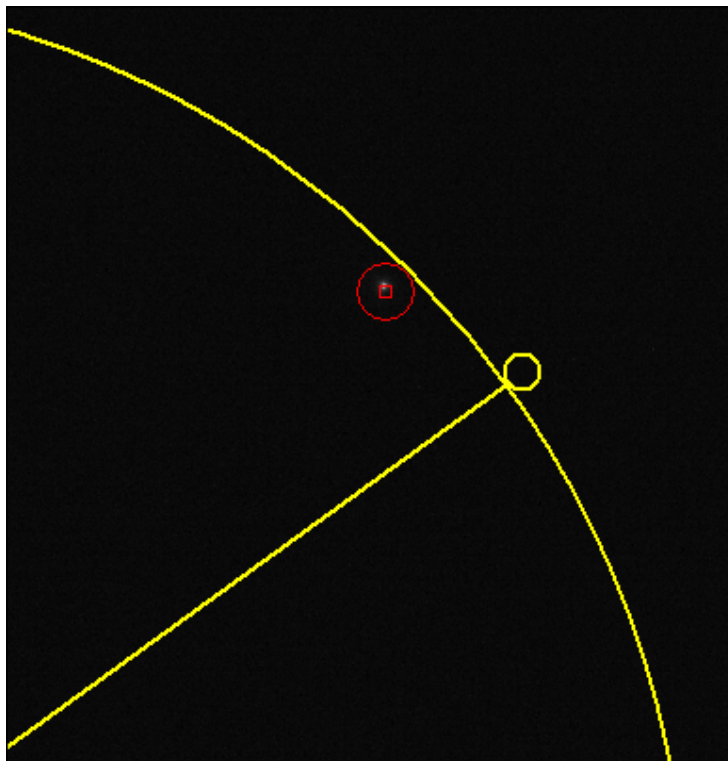


Fig. 35 Polaris located at the expected position (worst case distance), this is fine, even though this is not inside the yellow circle.

The next figure shows direction to move the system in azimuth and elevation (or latitude) to get star motion in order to place it into the circle.

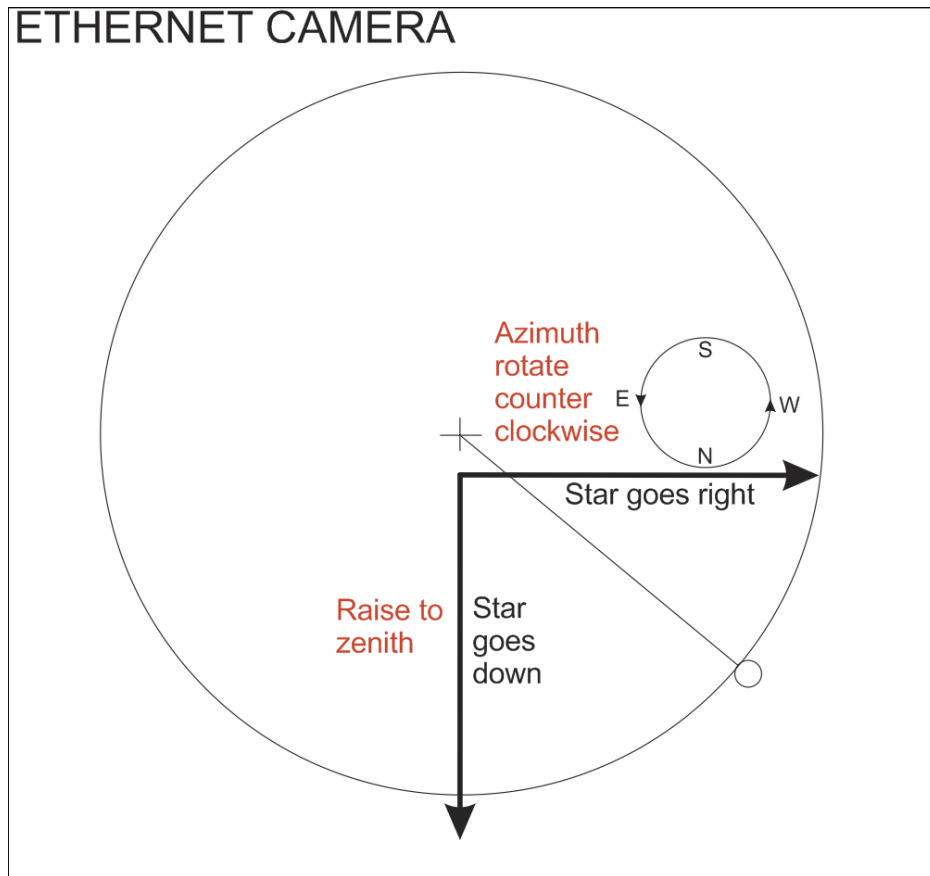


Fig. 36 Direction for Ethernet cameras (red is the system motion)

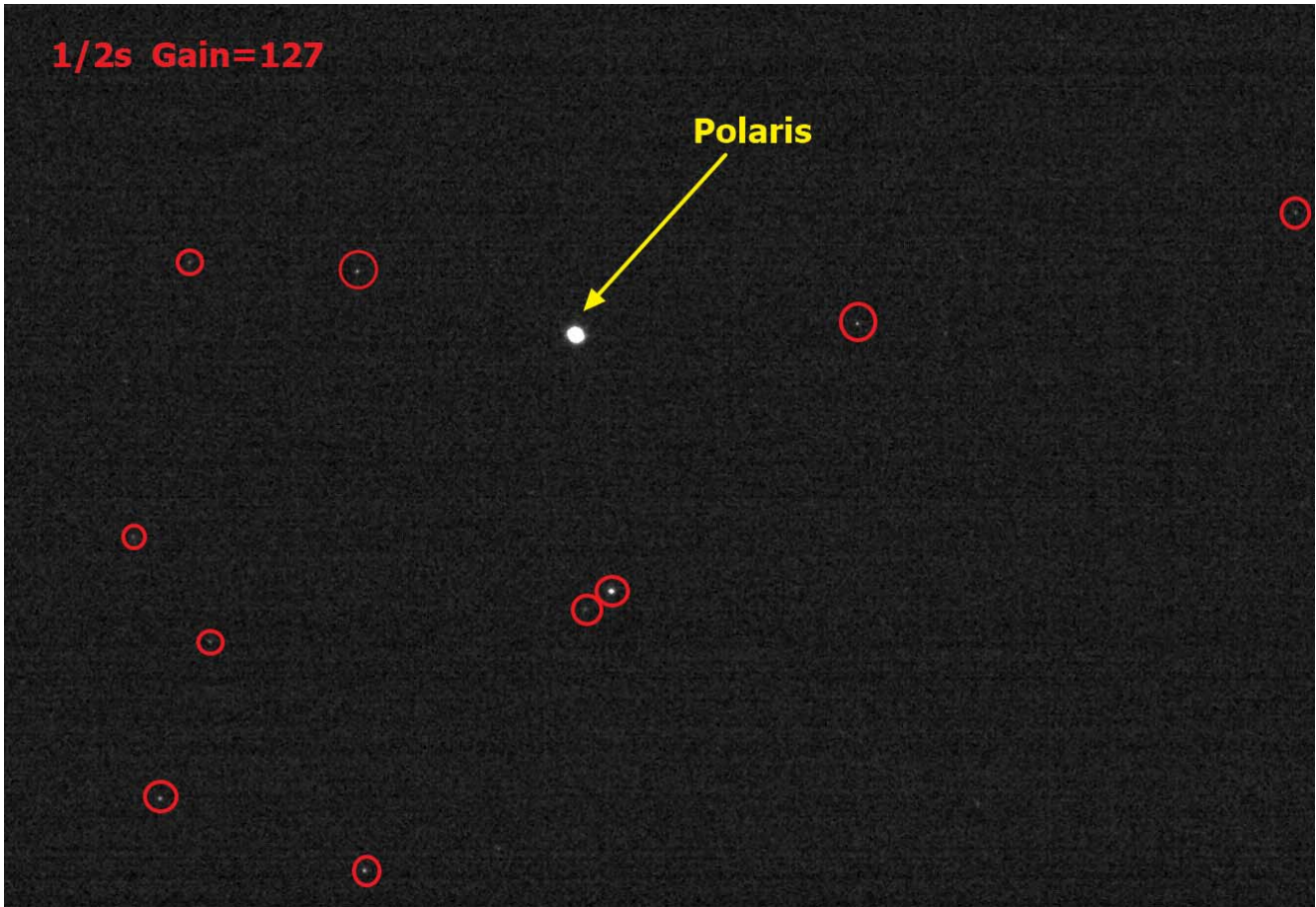


Fig. 37 Polaris image and other stars in March 15th, 0h00 UT (Warning other stars rotates with different dates/time)

3.1 Main tab

The main tab allows to change exposure time and gain of the camera. At first startup of the software, camera exposure time and the gain are set so that the **“Number of Saturated pixels:”** is either 0 or 1, but never 3 or more! Also avoid to use too short exposure time otherwise, the star is too dim and can lead to false measurements.

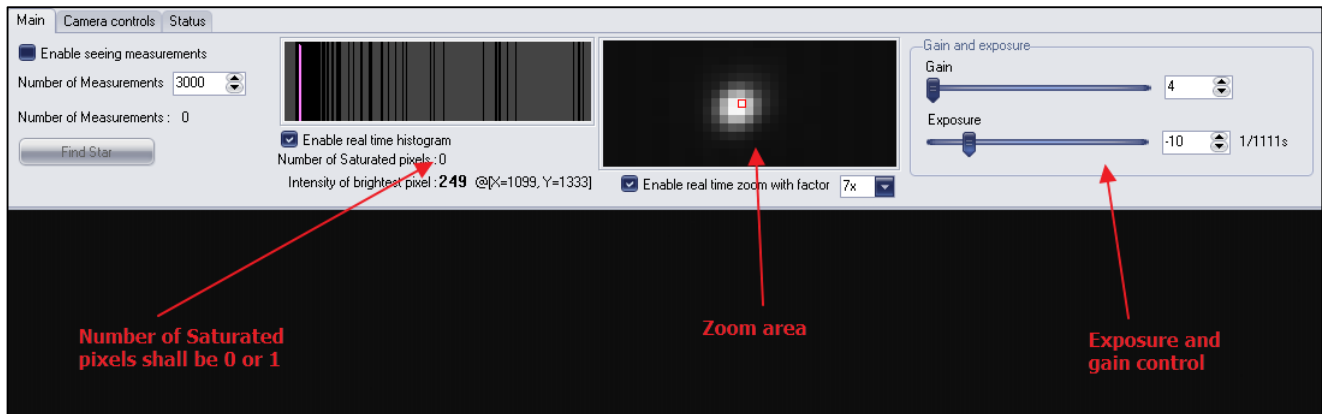


Fig. 38 Polaris located at the expected position

When the software is started, the camera is set to its highest resolution (2500x1950 pixels) to be sure to catch the Polaris star.

3.2 General Software Setup

The get it, please check the next menu

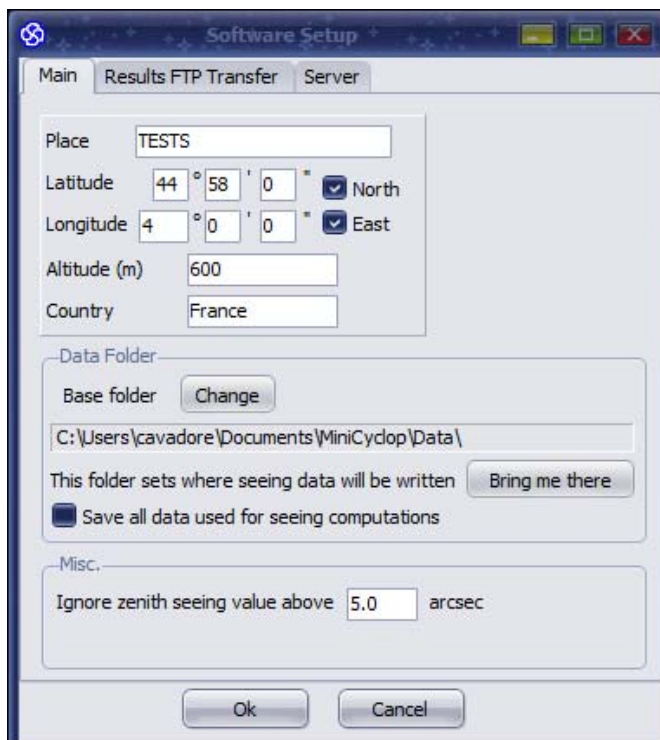


Fig. 39

Set up your geographic place, this is important. It is meant to compute Sun set and Sun rise, and other astronomical parameters, the seeing measurement will operate during the night, and will restart automatically so that seeing measurement are running 24h a day, 365 days per year. The Sun's maximum elevation is -5° for carrying seeing measurements.

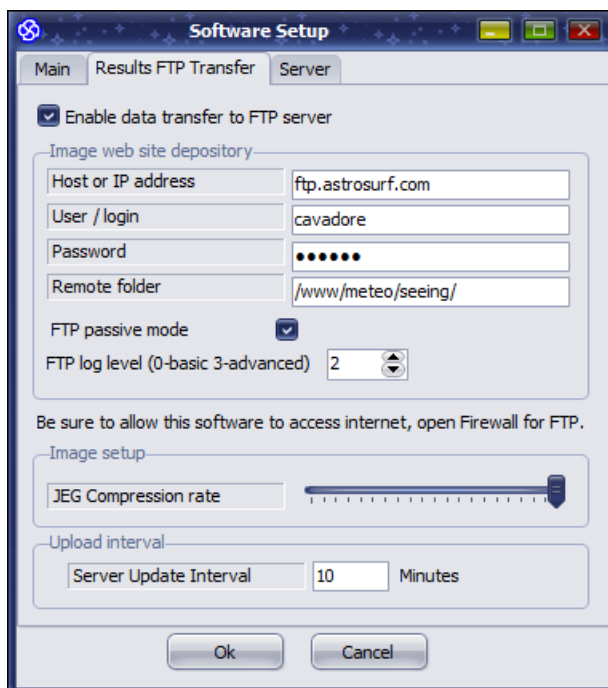


Fig. 40

The previous screen capture sets up were the seeing measurement output plot will be uploaded to a server.

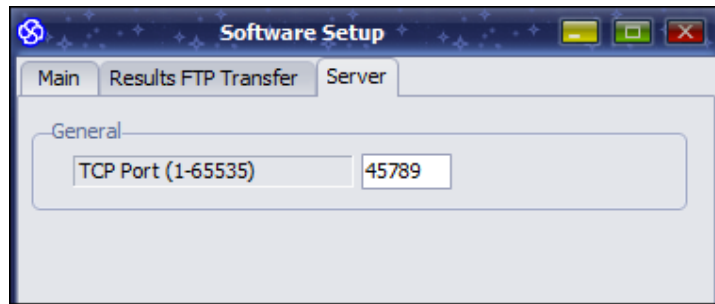


Fig. 41 TCP port for accessing last seeing measurement over a TCP client software

3.3 Starting measurements

Once the camera is polar alignment, and will be now forever, the camera can be definitely clamped, all screws of the latitude setting tightened, the seeing measurement can take place.

The "**Enable seeing measurements**" can be checked and only a sub-frame of the camera where the Polaris star sits is defined allowing readout rate of 50 images per seconds.

The "**Number of measurements**", just below, indicated how much tip tilt measurements has to be carried out before getting a valid seeing measurement. 3000 is a goof number, meaning that at 50 fps, a seeing measurement will be computed each minute. Lower figure can be put such as low as 1000, but noise measurement can be an issue.

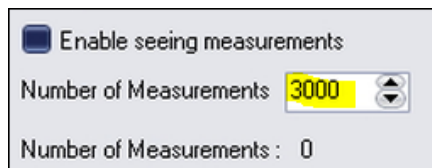


Fig. 42 Enabling seeing measurements

Then measurements starts until the Sun has an elevation preventing from the measurements to occur. Also clouds can interrupt measurements

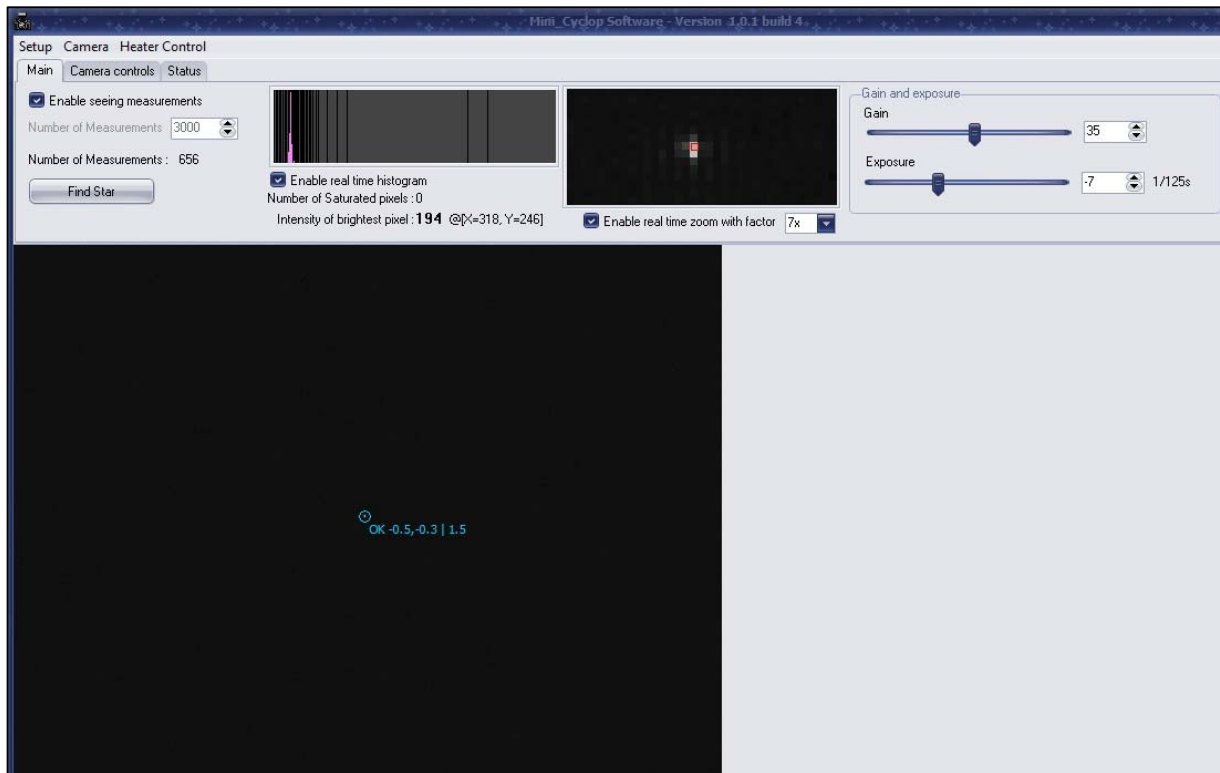


Fig. 43 Running seen measurements

This should run at 50 frames per second (fps), and if the computer is too busy or too slow, this might reduce the frame rate.

3.4 Camera control tab

This tab is only visible for debugging mode of the software, so generally not visible to the end user.

3.5 Status tab

This provides the status of the system, with results of the last 3000 measurement (if set so). Also SUN elevation is provided. Symbol " (double quotes) stands for arcsec. Local and zenith corrected seeing are provided.

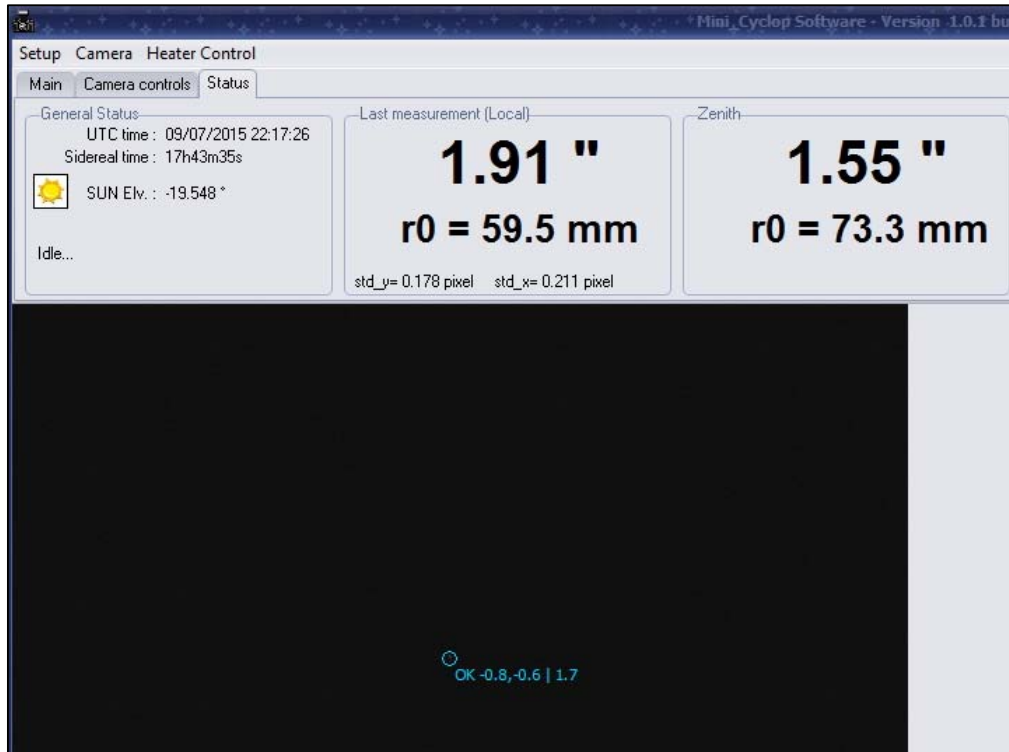


Fig. 44 Measurement pending (blue dot reports OK)

3.6 The plot window

The plot windows, plots results of the seeing measurement, either it will be the last 3000 tip tilt measurement data, or seeing and star lux level for an all-night.

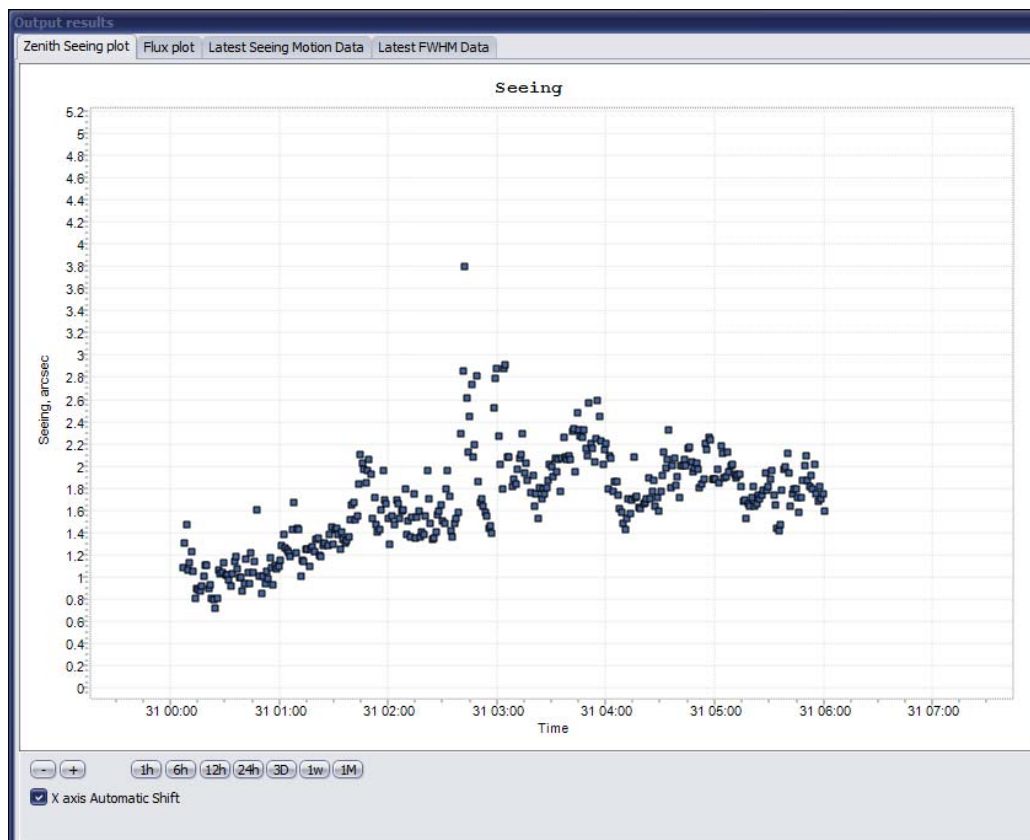


Fig. 45 Zenith seeing measurement plot versus time

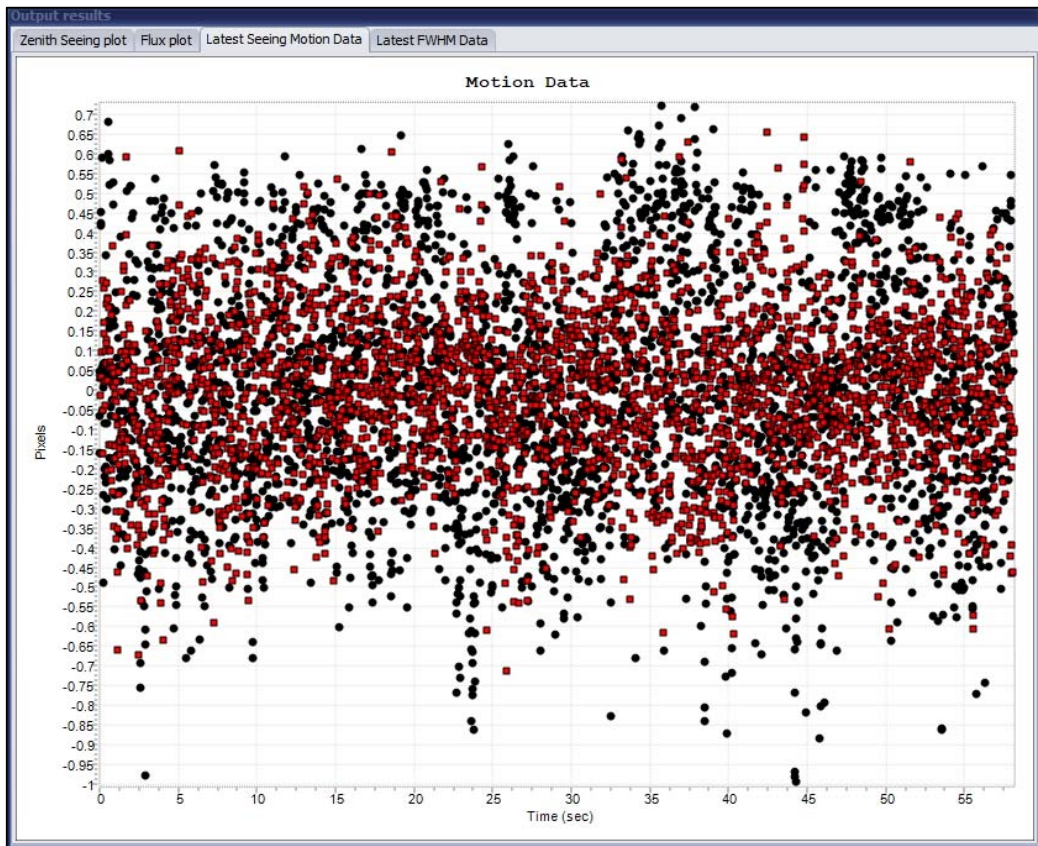


Fig. 46 X and Y star motion plot (last 3000 tip tilt measurement over last 60s)

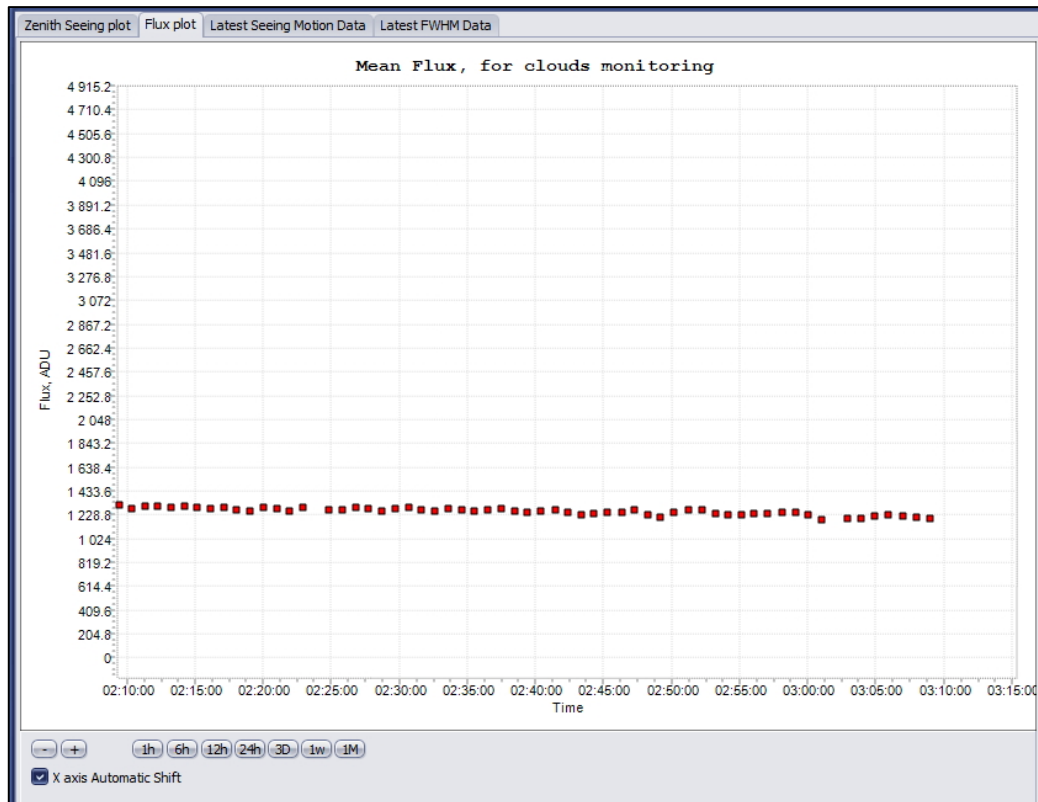


Fig. 47 Star flux versus time (all night plot)

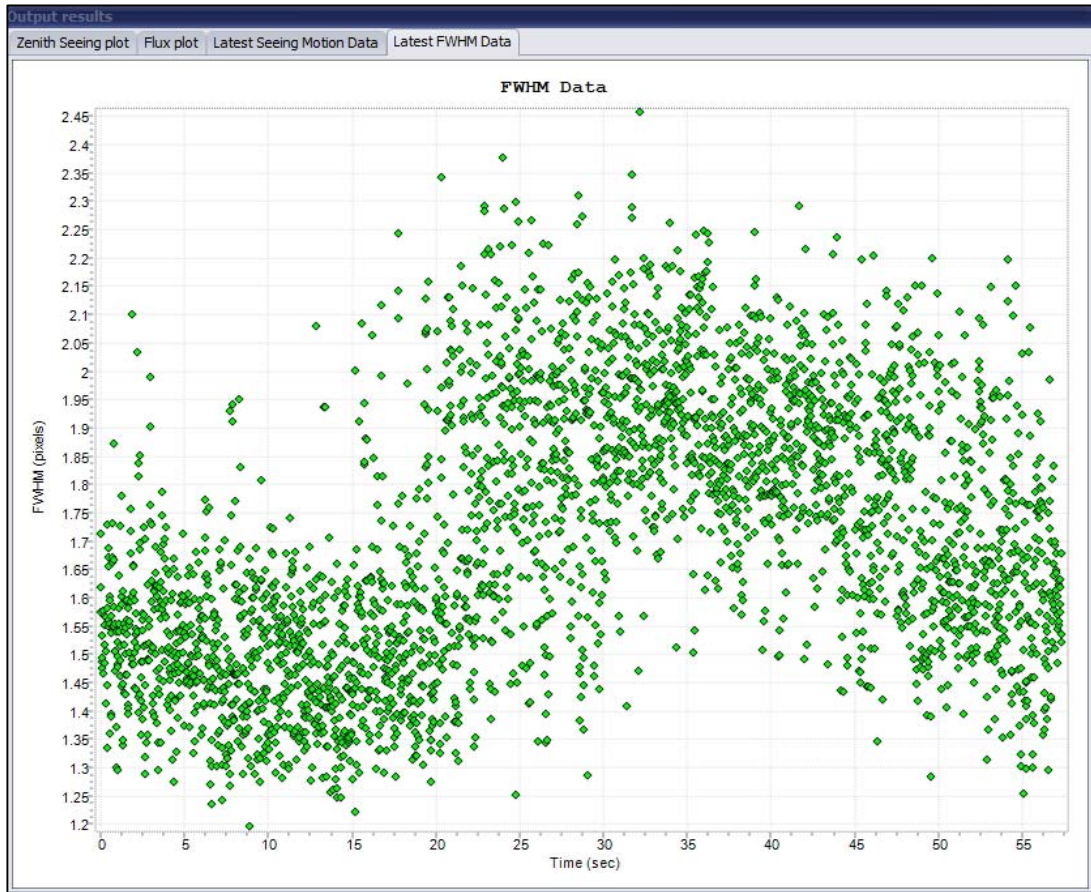


Fig. 48 Star FWHM versus time (last 3000 tip tilt measurement over last 60s)

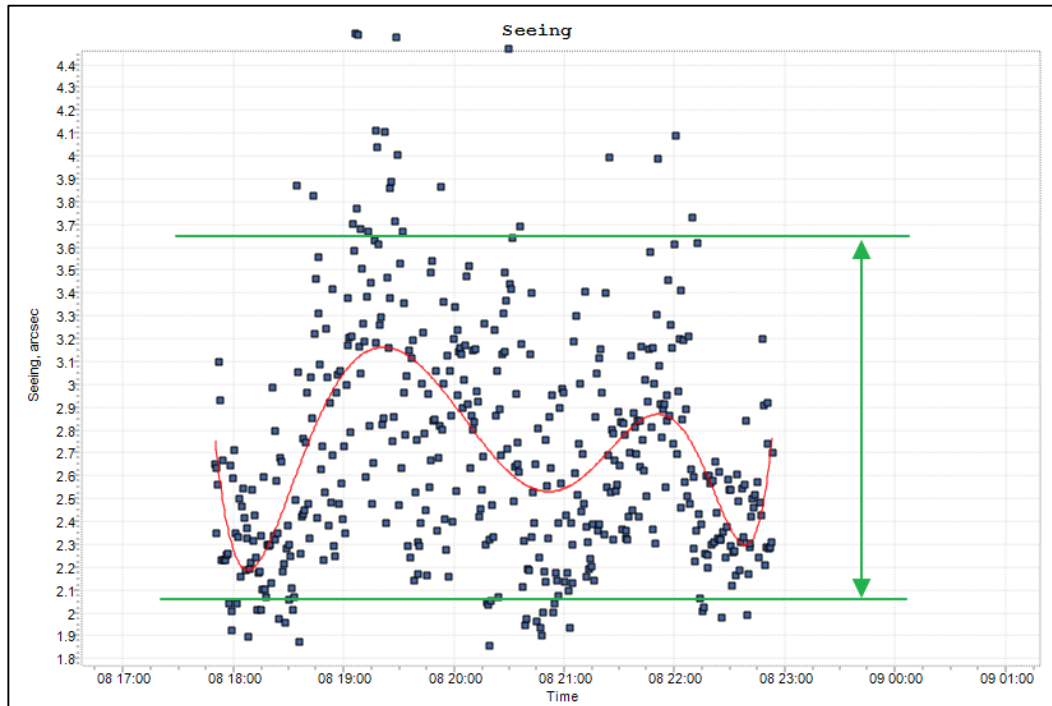


Fig. 49 Seeing measurement variations over one hour, plus smoothed data (red)

3.7 Storage of files produced by the system

The software stores all the files it produces into a directory that is specific to the user.

This directory (and subdirectories) is created automatically by the software on startup.

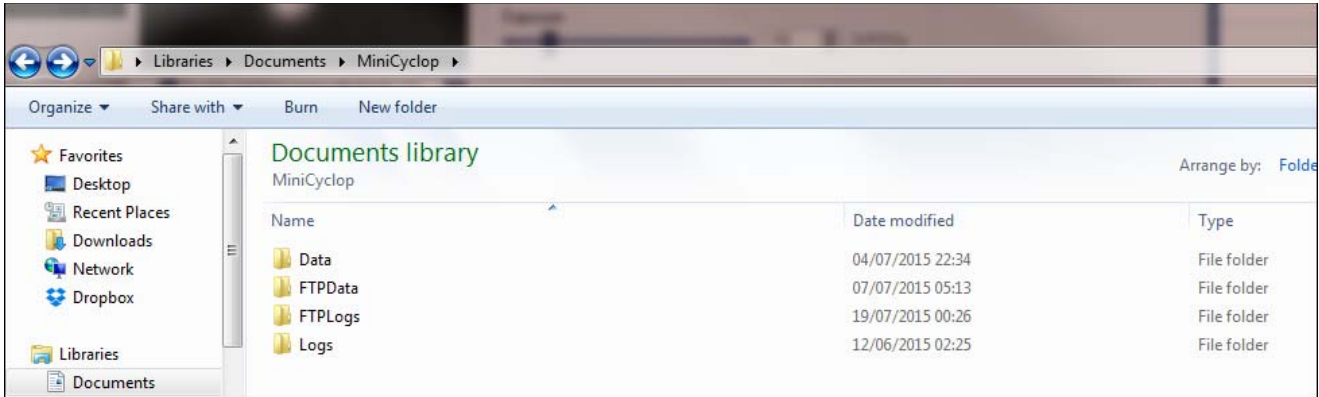


Fig. 50

Under Windows 7, 8 & 10 : "C: \ Users \ [username] \ My Documents \ MiniCyclop"

- The subdirectory DATA :

This saves the measurement in different forms

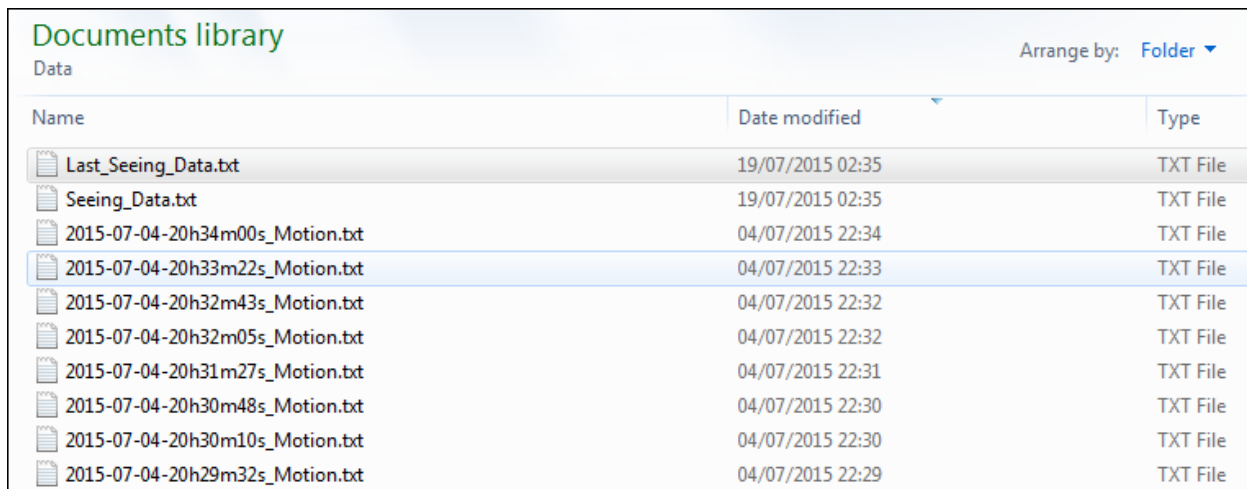


Fig. 51

The **Seeing_Data.txt** file:

Line	UTC Date	Local Time	UTC Date	Local Time	Star Flux (ADU)	Zenith Seeing (arcsec)	Seeing R0
1	12/06/2015 01:17:31	12/06/2015 03:17:31	12/06/2015 03:17:31	2457185.5538405	8710.5	1.23	
2	12/06/2015 01:18:28	12/06/2015 03:18:28	12/06/2015 03:18:28	2457185.5544924	8699.1	0.08	
3	12/06/2015 01:19:24	12/06/2015 03:19:24	12/06/2015 03:19:24	2457185.5551450	8700.2	0.05	
4	12/06/2015 01:20:20	12/06/2015 03:20:20	12/06/2015 03:20:20	2457185.5557970	8699.3	0.05	
5	12/06/2015 01:21:17	12/06/2015 03:21:17	12/06/2015 03:21:17	2457185.5564490	8700.1	0.04	
6	12/06/2015 02:00:39	12/06/2015 04:00:39	12/06/2015 04:00:39	2457185.5837898	8702.9	0.25	
7	12/06/2015 02:01:35	12/06/2015 04:01:35	12/06/2015 04:01:35	2457185.5844417	8683.4	0.04	
8	12/06/2015 02:02:32	12/06/2015 04:02:32	12/06/2015 04:02:32	2457185.5850937	8680.1	0.04	
9	12/06/2015 02:03:28	12/06/2015 04:03:28	12/06/2015 04:03:28	2457185.5857458	8677.9	0.04	
10	12/06/2015 02:04:24	12/06/2015 04:04:24	12/06/2015 04:04:24	2457185.5863976	8678.1	0.04	
11	12/06/2015 02:05:21	12/06/2015 04:05:21	12/06/2015 04:05:21	2457185.5870496	8678.6	0.04	
12	12/06/2015 02:06:17	12/06/2015 04:06:17	12/06/2015 04:06:17	2457185.5877016	8678.7	0.04	
13	12/06/2015 02:07:13	12/06/2015 04:07:13	12/06/2015 04:07:13	2457185.5883536	8676.1	0.04	
14	12/06/2015 02:08:10	12/06/2015 04:08:10	12/06/2015 04:08:10	2457185.5890055	8677.1	0.04	

Fig. 52

This is saving for each seeing measurements (after 3000 tip tilt measurement) the computed zenith seeing, where from left to right, the ending measurement date as UTC time, the ending measurement date as Local time, the ending measurement date expressed in Julian days, the star flux as ADU, the zenith seeing expressed in arcsec, and the last column is the seeing R0 fried zenith figure.

The **Last_Seeing_Data.txt** file:

This is the same columns as the previous file, but only the last measured is saved.

Line	UTC Date	Local Time	UTC Date	Local Time	Star Flux (ADU)	Zenith Seeing (arcsec)	Seeing R0
1	19/07/2015 00:34:15	19/07/2015 02:34:15	19/07/2015 02:34:15	2457222.5237936	11173.7	0.48	235.9
2							

Fig. 53

The **xxxx-xx-xx-xxhxxmxxs_motion.txt** file:

Where x is a digit from 0 to 9, **xxxx-xx-xx-xxhxxmxxs** is the date where the file has been saved.

This file is only saved if the **“Save all data for seeing computation”** from the setup box is checked, and after 3000 measurements have been carried out, like set here:

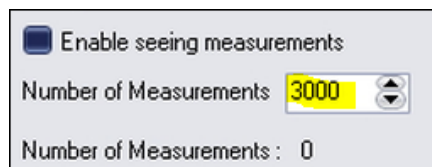


Fig. 54

Line	Time (s)	X (m)	Y (m)	FWHM (m)
1	0.000000000000000E+0000	-7.44810332415113E-0002	7.44580489283635E-0002	2.15954852678060E+0000
2	1.20001612231135E-0002	-1.06484652781944E-0001	3.41480559413867E-0002	2.09294361311664E+0000
3	3.89997381716967E-0002	-5.45766028500907E-0002	4.14983755505034E-0002	2.06113482675301E+0000
4	5.20000699907541E-0002	-6.18532622800103E-0002	8.31943808765345E-0002	2.09032634816929E+0000
5	6.40002312138677E-0002	-1.80279409460127E-0002	1.22350497883446E-0001	1.95611161196255E+0000
6	7.50002218410373E-0002	-2.69960572668992E-0002	5.89152689908019E-0002	2.16626144833704E+0000
7	9.00002662092447E-0002	-7.24816130742170E-0002	8.09788771029218E-0002	2.20886863085277E+0000
8	1.01000256836414E-0001	-9.60305153897707E-0002	2.78357688817152E-0002	2.00357667066974E+0000
9	1.12000247463584E-0001	-6.44500143395135E-0002	7.30228620006699E-0002	2.07288897239504E+0000
10	1.24999950639904E-0001	1.99508712303214E-0002	6.83815235840655E-0002	2.33955576656984E+0000
11	1.38999824412167E-0001	-1.21980994370119E-0001	1.35006714003424E-0001	1.95402136979396E+0000
12	1.50999985635281E-0001	-4.33720065139482E-0002	7.93115639599478E-0002	2.08105364188166E+0000
13	1.63000146858394E-0001	5.00239859735530E-0003	7.18884364863470E-0002	2.17991338727981E+0000
14	1.75000308081508E-0001	-3.58474155393083E-0002	5.88749707123384E-0002	2.15582112935896E+0000
15	1.88000011257827E-0001	-8.47847398616182E-0002	5.06295159123056E-0002	1.93017379811840E+0000
16	2.01999885030091E-0001	5.69653411082527E-0003	3.00147969266220E-0002	1.95762924113358E+0000
17	2.12999875657260E-0001	-1.14801446360957E-0002	1.22293465420285E-0002	1.91556160010443E+0000
18	2.26000207476318E-0001	2.85552625291530E-0002	6.48050168920804E-0002	1.95703846010448E+0000

Fig. 55

The first column is the difference in seconds from the date when the file was created and named accordingly. The second is the X position of the star into the detector, the third is the Y position of the date, and the last column is the mean FWHM in X and Y direction of the star.

This can lead to large amount of data, only enable this last file if necessary.

This DATA folder can be changed if necessary, using the setup form, as follows:

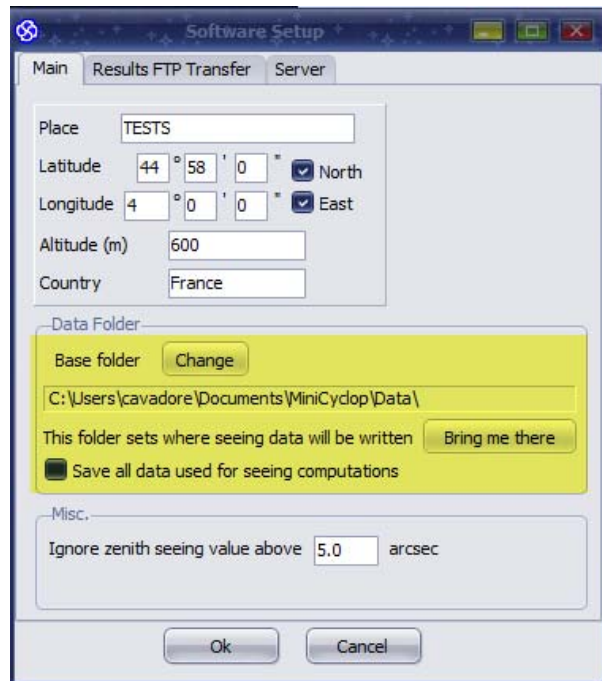


Fig. 56

- The FTP DATA folder:

This folder contains data prior to be transferred to the FTP server. This is mainly last screen copy of plots.

- The FTP logs folder:

This folder contains FTP logs, in order to debug FTP data sending in case of failure to comply.

- The Logs folder:

This folder contains software logs, in order to debug the software, this might be requested by ALCOR-SYSTEM to tackle bugs.

3.8 Seeing measurement troubleshooting section

This section deals with issues that prevents seeing measurement from been collected properly.

3.8.1 *Pillar not been stiff enough*

If the pillar is not stiff enough, the seeing measurement can be jeopardized by wind gusts. A concrete or steel structure is recommended. When hitting the system with hands, it should not move or vibrate and be as stiff as possible. If failing to comply with this, seeing measurement will be very noisy and correlated with wind gusts, so pay careful attention to the structure where is attached the system. Do not leave the system unattached to the pillar or to the structure, use bolts to attach it.

3.8.2 *No data despite clear sky*

Check that the front entrance window is not covered by moisture due high relative outdoor humidity. To overcome this, please read section 4 of this manual, the system is equipped with heater. Please connect the camera with the RS232 link to get access to it.

3.9 TCP IP server data exchange

This is currently being developed, section will be updated as soon as possible. This allows to get the mini-cyclope output data from a TCP client, using the main software as a server. If needed do not hesitate to contact us.

4 Front window heating control system (Cyclope ONLY)

4.1 Principle

Entrance window can be warmed up to remove condensation that can build up on its surface.

This is due to high humidity level combined with low outdoor temperature.

The system has an external temperature and humidity sensor to start or stop the heating of the front window entrance. The temperature of this window is also monitored, so that it does not exceeded 30°C.

The control of this feature is possible by the means of a RS 232 link. This link has not tied with the camera and uses a different channel.

Once the external temperature threshold, external humidity threshold and the power level is set, the system has an embedded processor that takes care of the heating management of the window, even though any link to the PC is established. This is a standalone and autonomous system.

4.2 Operation

The Serial RS232 COM port must be set to the right value (depending on your system's settings) and click "**Connect**".

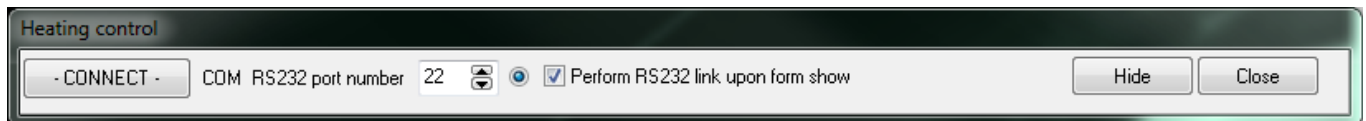


Fig. 57

If an error occur (no cable tied, or wrongly set port COM), this message will be displayed:

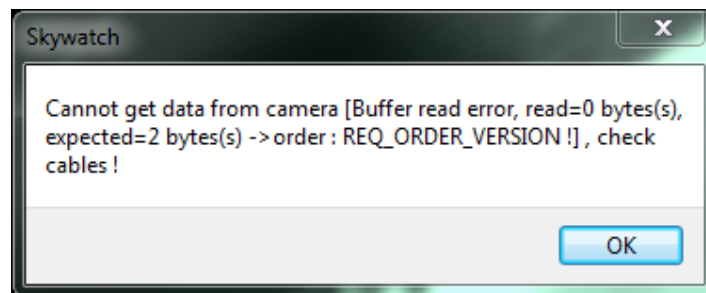


Fig. 58

Otherwise, the window expand and information is displayed as follows:



Fig. 59

Top left shows outdoor temperature and humidity. Those figures will trigger the window heating. Also the temperature of the inner part of the camera, and temperature of the front window are monitored. A plot is showing how this figures evolves over the time. The last 2000 points are automatically saved into a file.

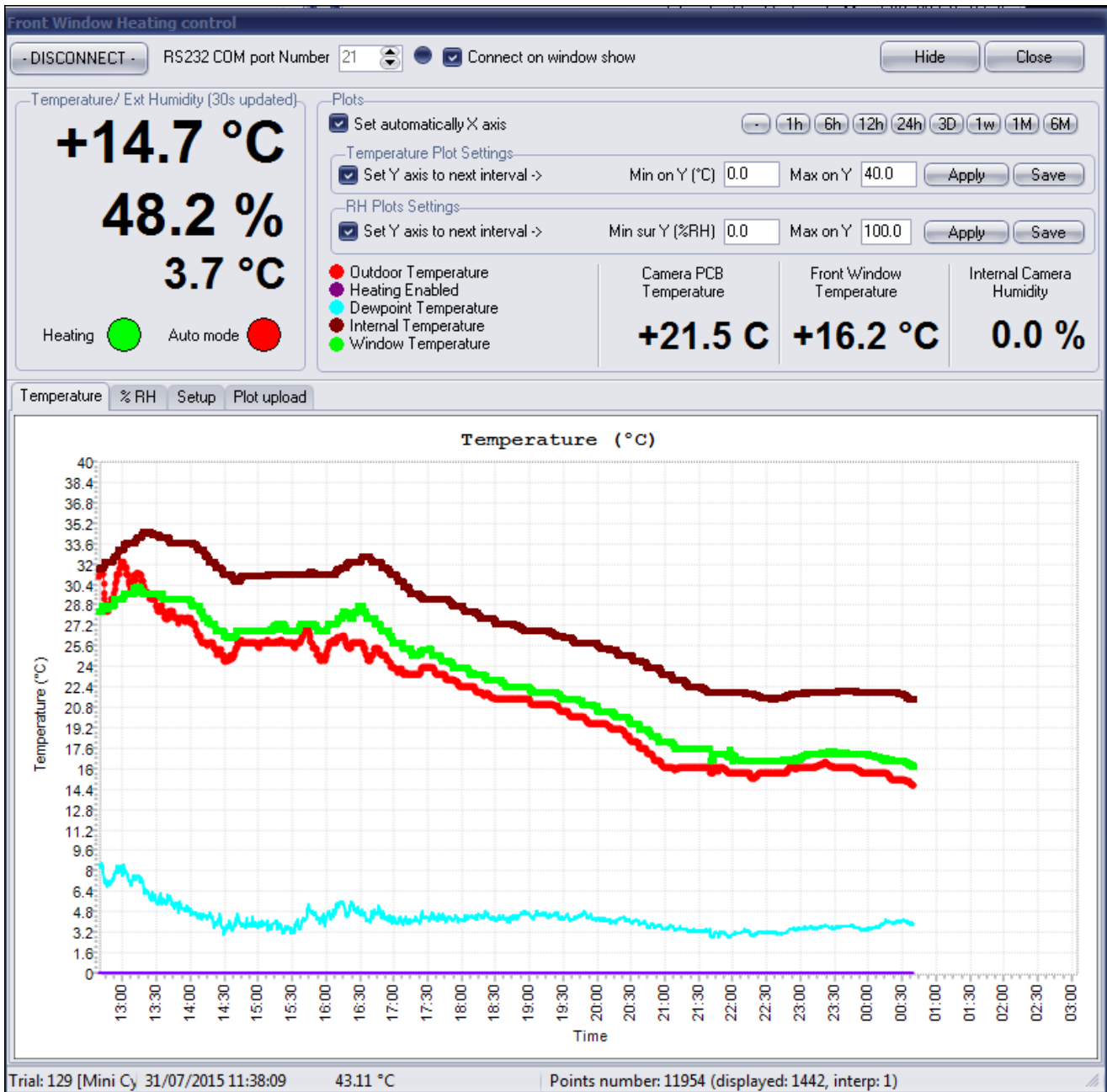


Fig. 60

When the violet curve goes up, it means that the window heating has been enabled, and stay down when the window heating is disabled.



Fig. 61

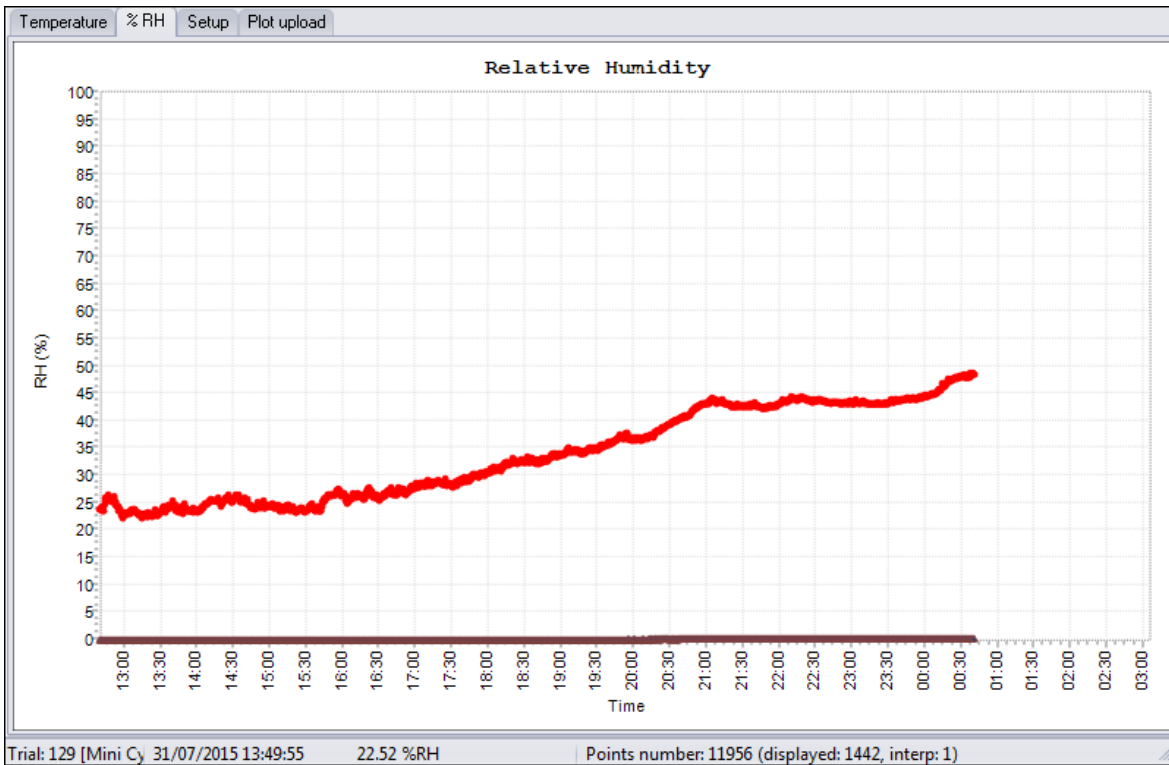


Fig. 62

The humidity tab, shows the outdoor relative humidity level and inner camera relative humidity.

The inner camera relative humidity shall never be above 45% otherwise, dew may form in the inner side of the dome, and this jeopardizing measurement quality. On delivery, the camera inner humidity can be very low, less than 5% because of desiccant presence inside the camera.

The **control/setup** tab allows to setup threshold temperature and humidity to allow dome heating to be turned on or off.

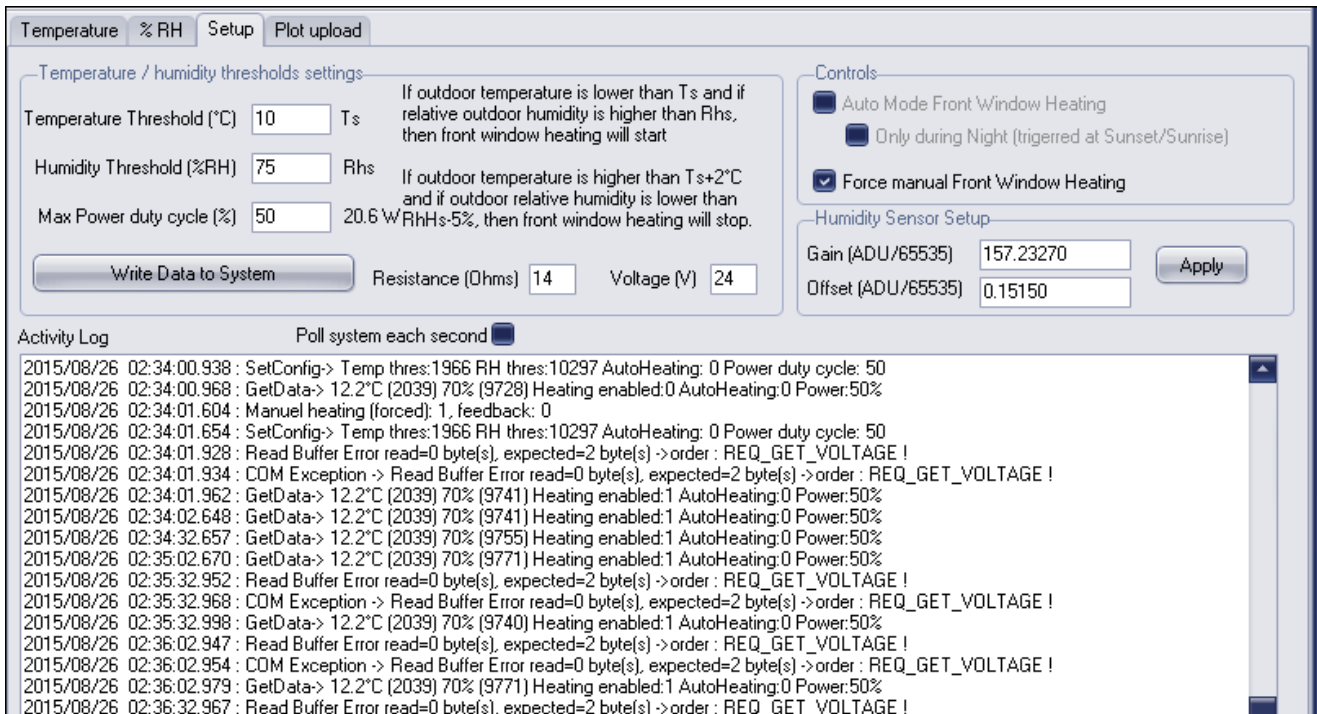


Fig. 63 Note that for Cyclope Resistance is 14 Ohms and voltage is 24V

Do not have the dome heating working all the time, during the day, for instance, this is not very useful and advised, this can wear out the o-ring sealing quicker than expected.

The heating of the front window entrance is achieved throughout a set of resistors placed under the sphere base. It can defog or defrost the outside side of the acrylic sphere. The inner side shall not have dew, please refer to the inner humidity sensor figure.

The system is autonomous (works without link to PC and without user's supervision). It sets out the conditions when temperature and humidity levels enable occurrence of water condensation.

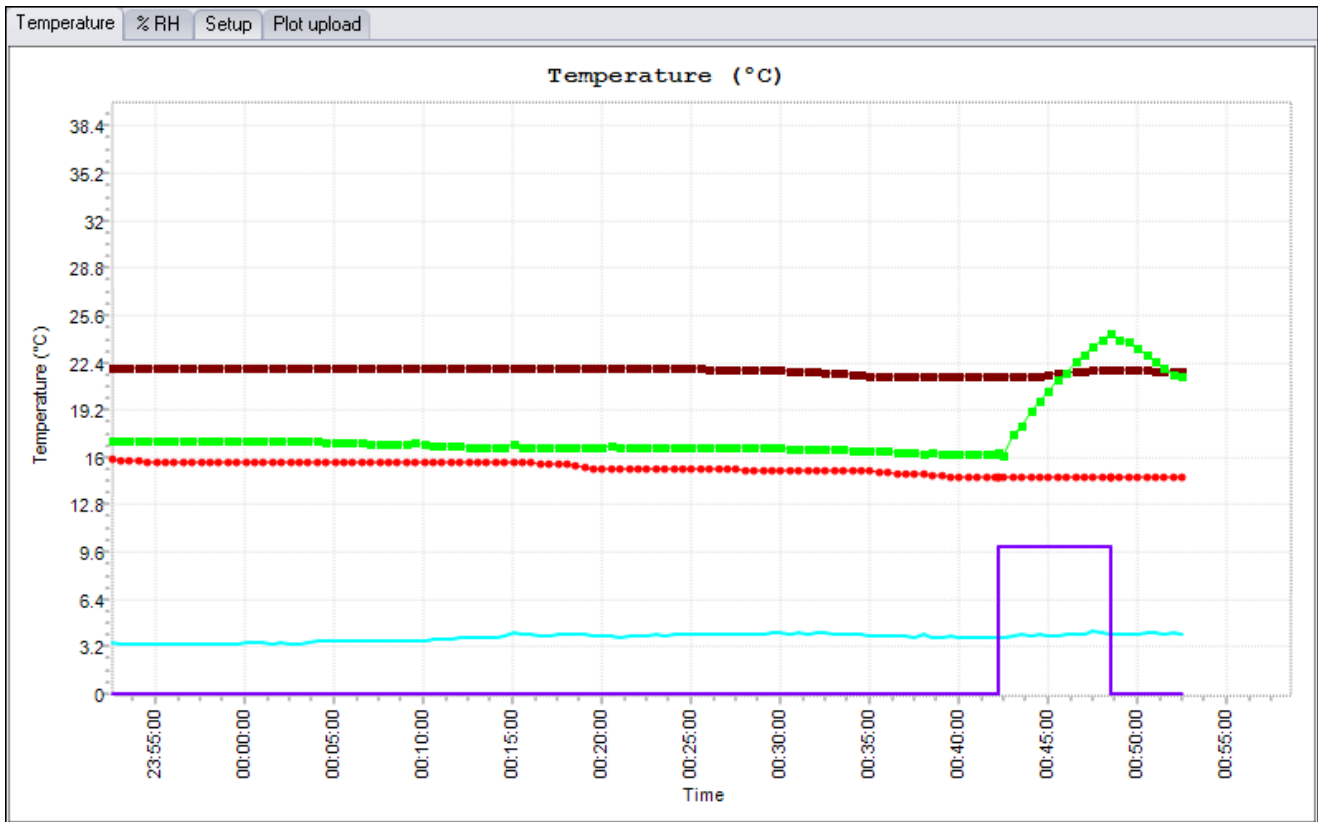


Fig. 64 : the violet curve rising up at 00:42:00 indicate that the front window heating is active and heating. The green curve reports temperature of the entrance window.

As soon as the temperature is below a certain value, and moisture above another value, the heating system is automatically activated. These levels are named **temperature and humidity levels**.

By default, factory set, the default threshold temperature is set to +7 ° C and humidity level to 90%. These thresholds may be inappropriate for a given site and can be adjusted by user input.

Similarly, the heating power is set by default to 50% duty cycle, it can be changed according to site and circumstances.

Beware, if this window is closed, getting and recording data cannot occur anymore by PC software. We recommend that you simply hide it. Nevertheless, window's heater activation is achieved by the camera alone, without any link to the PC.

There is possible effects on the heating of the windows to the measurements, as shown below:

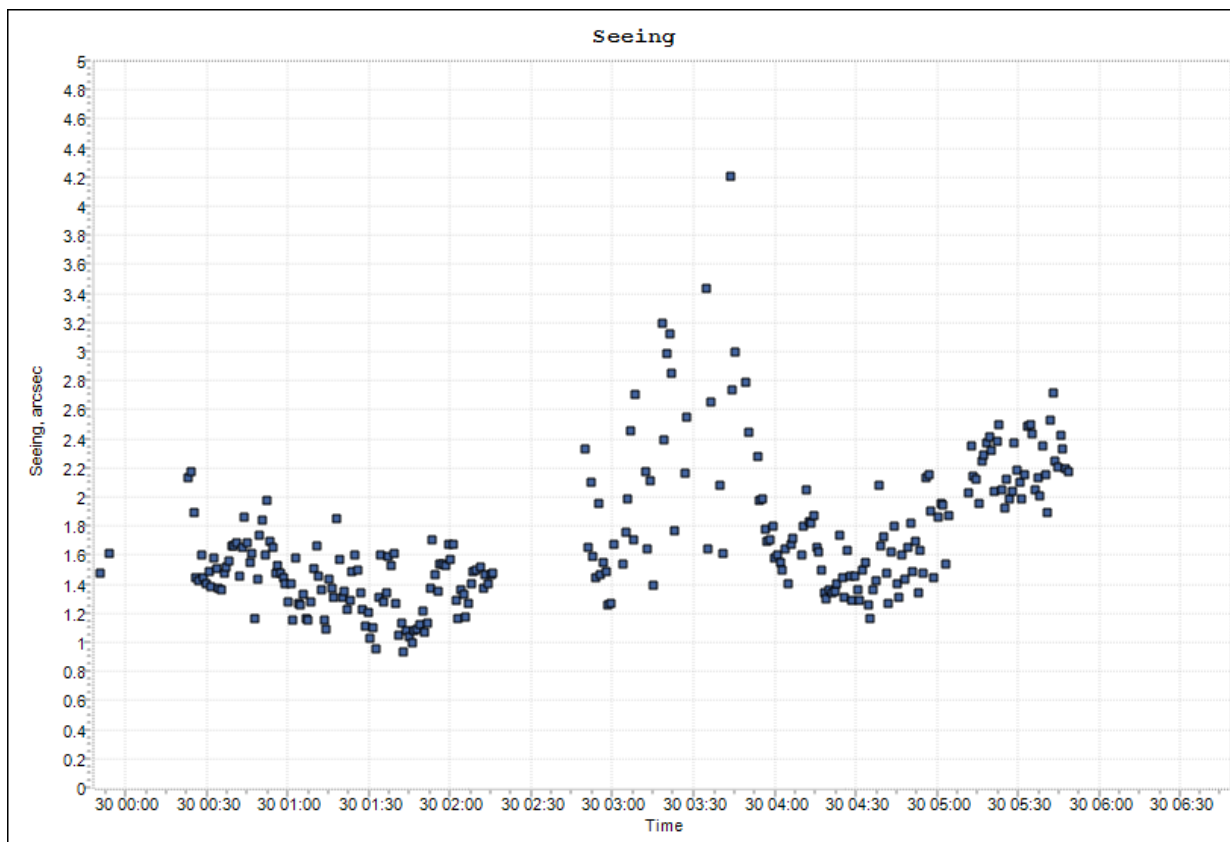


Fig. 65 : Overheating front window effects

Between 3h and 4h, the heating power was set to 50%, and has an effect on jeopardizing seen measurements.

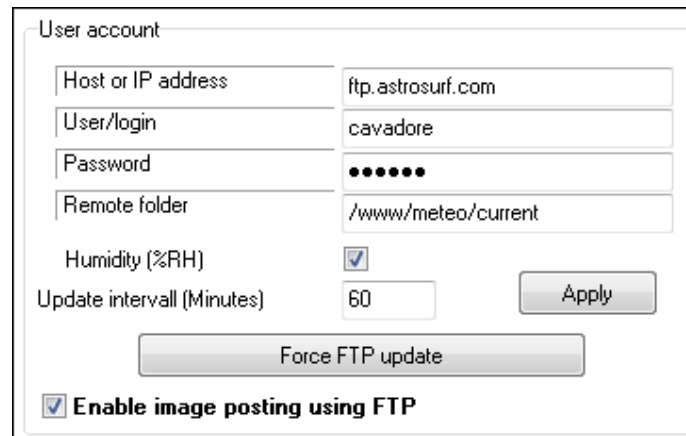
The next table shows the temperature increase of the window (no wind, stabilized) versus different value of the power:

Power	Temperature increase (Window)
50%	+22 °C
15%	+8°C
10%	+6°C

Power	Watts
100%	43
90%	35
80%	27
70%	21
60%	15
50%	11
40%	7
30%	4
20%	1.7
10%	0.5

So beware of the heating power, use large heating power to remove ice from the camera, in normal operation (measurements) do not go above 15% of heating power when device in seeing measurements. The camera alone consumes 0.6 W (front window heater disabled). If the temperature of the windows exceed 30°C, the heating is stopped. Use 100%power only in manual mode to remove ice that has built on the device, for instance.

Finally, all the plot can be transferred as jpeg file into a server for remote supervision:



The screenshot shows a 'User account' configuration window. It contains the following fields and controls:

- Host or IP address: ftp.astrosurf.com
- User/login: cavadore
- Password: masked with 7 dots
- Remote folder: /www/meteo/current
- Humidity (%RH): checked checkbox
- Update interval (Minutes): 60
- Buttons: 'Apply' and 'Force FTP update'
- Checkbox: Enable image posting using FTP

Fig. 66 Website setting for temperature and humidity plots to be uploaded

5 System maintenance

5.1 Entrance window cleaning (Cyclope Only)

Entrance window cleaning must be achieved on regular basis. Consecutive rain and snow can bring dust that is deposited on the entrance window surface; it reduces the optical transmission.

The entrance window is made of BK7 and MgF2 anti reflection coating, and it can be cleaned with water, then with a Kleenex moistened with washer fluid dedicated for optical lens cleaning. The 8 screws can be removed to detach the upper part from the rest of the camera, if necessary. Attention must be paid during this phase:

- The cable bringing power to the heaters should not be pinched during reassembly
- O-rings properly positioned in their grooves with grease
- 8 screws must be put together and all tightened the same way.

Incorrect reassembly can cause loss of sealing, allowing water to enter and de facto warranty will no longer apply. If you do not feel confident with dismounting the upper part, please do not do it. ALCOR SYSTEM can offer maintenance service if required.

5.2 Inner camera desiccant replacement

To avoid any dew to form in the inner side of the entrance window, a desiccant bag made of 2A molecular sieve is installed into the lower part of the tube that contains the camera. The inner camera relative humidity is monitored, and should not exceed 40%. A brand-new desiccant, will get relative humidity close to 5% and can last 2 years. If replacement needs to be achieved, please contact Alcor-System (sales@alcor-system.com) to know you how to proceed.

6 Trouble shooting

6.1 No star is visible

Polaris star is a magnitude 2 star, and is, indeed, a not so bright star. Do not confuse Polaris star with another, because you will catch it, but it will disappear from the camera field of view after some hours. Gamma Cepheus (magnitude 3), or Beta Ursa Minor (magnitude 2) are so far away from the pole, that after one hour or two, the star will escape from the field of view due to earth's rotation. If you are sure this is the Alpha Ursa Minor star (Polaris), and still not visible, try to increase exposure time to 1 sec just for aiming the Cyclope. Then reduce exposure to perform seeing measurements, the allowed maximum exposure time is 1/64 sec, this is better to use 1/128 sec or even better 1/256 sec (only if the star is very sharp and atmosphere is very clear). Gain can be increased also, use the slider. Some of the lens inside the cyclope are better than other, and star FWHM can increase, typical value are from 1.9 to 3.2 pixel FWHM.



Fig. 67 Exposure time and Gain can be tuned to get the best detection level of Polaris

6.2 Exposure time optimization

Not all the lenses have the same performances, also focus can drift a bit, so size of the PSF can vary from 1.8 to 3.5. Best is 2.1 pixels. To optimize seeing measurement, check from time to time (three times a year) the signal level of the star in a perfect clear night. If too high, saturation can occur and bias the measurements. Exposure time must be 1/256 or 1/128 sec as best exposure time. Gain can be adjusted to have a mean level of 128 ADU in the next plot. If say, measured to 200 ADU star scintillation can lead to saturation. Software can better cope lower mean levels than 128, than saturation where no information is available.

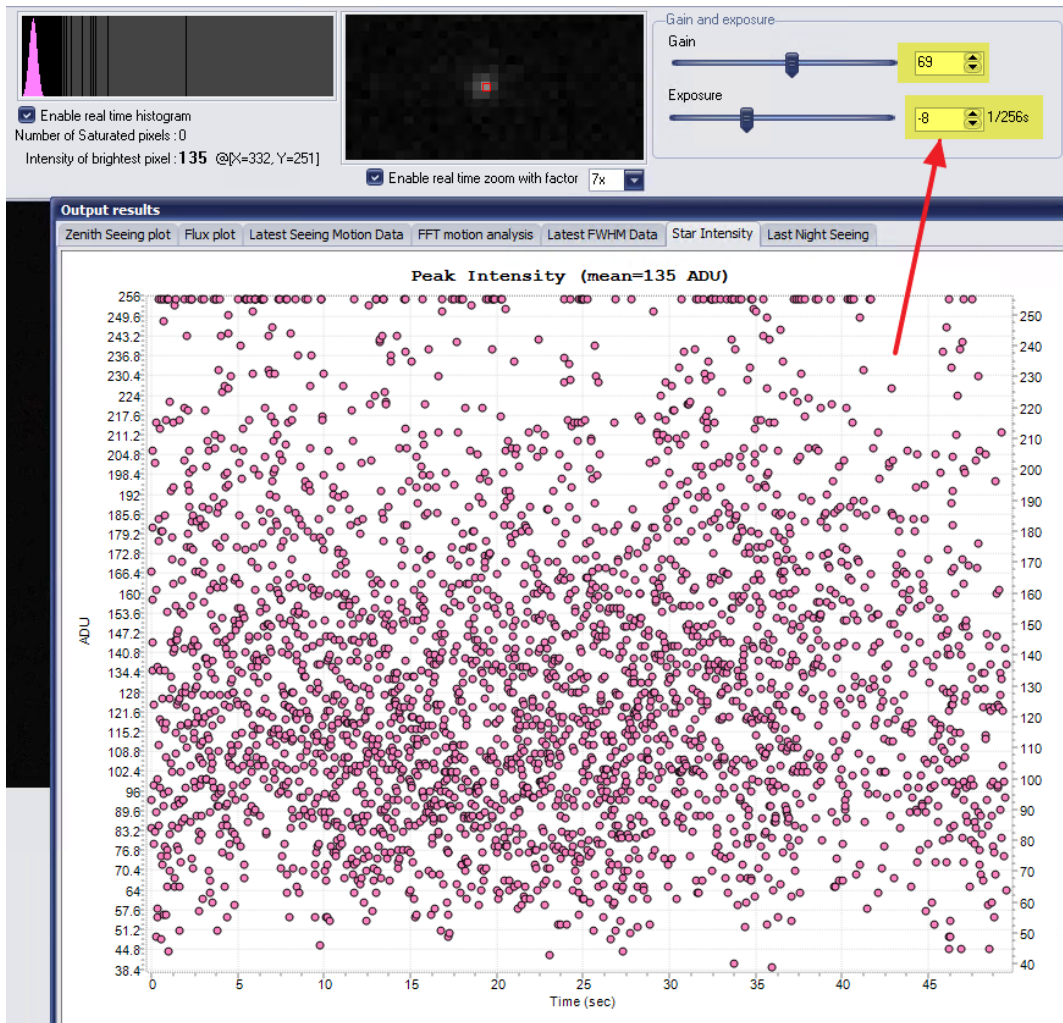


Fig. 68 Exposure time and Gain can be tuned according to measured peak intensity

6.3 Camera focus questions

Some customers noticed a halo when long exposure is used for Polaris star (say from 1/7sec and above). This was misinterpreted as defocus. Camera focus is achieved on factory and all system are tested on Sky. This is “defocus” is indeed halo due to some filter reflection. If the exposure time is decreased to the operational exposure time (1/64 to 1/128 s), it will display a star that has a normal shape and the halo has disappeared. The seeing measurement can take place and star size (i.e FWHM) is consistent with what is expected. The FWHM plot data shows when exposure time is set to 1/64 or 1/128 sec that the mean FWHM is around 1.9 pixels, that is OK. If the Polaris star would be really defocused, it would not show any signal at 1/64s, because the star will be spread into many pixels and measurement will not be possible.



Fig. 69 Long exposure on Polaris (1/7s) showing some filter reflection effect (halo)

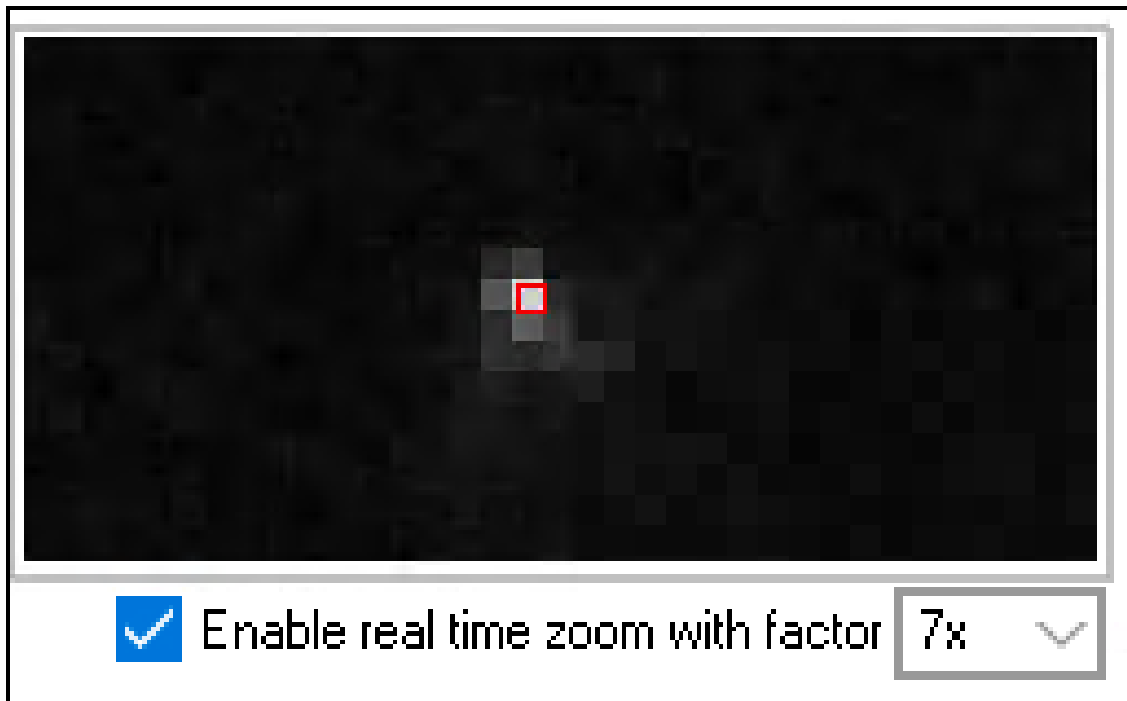


Fig. 70 1/125 s exposure, the star halo is not visible anymore

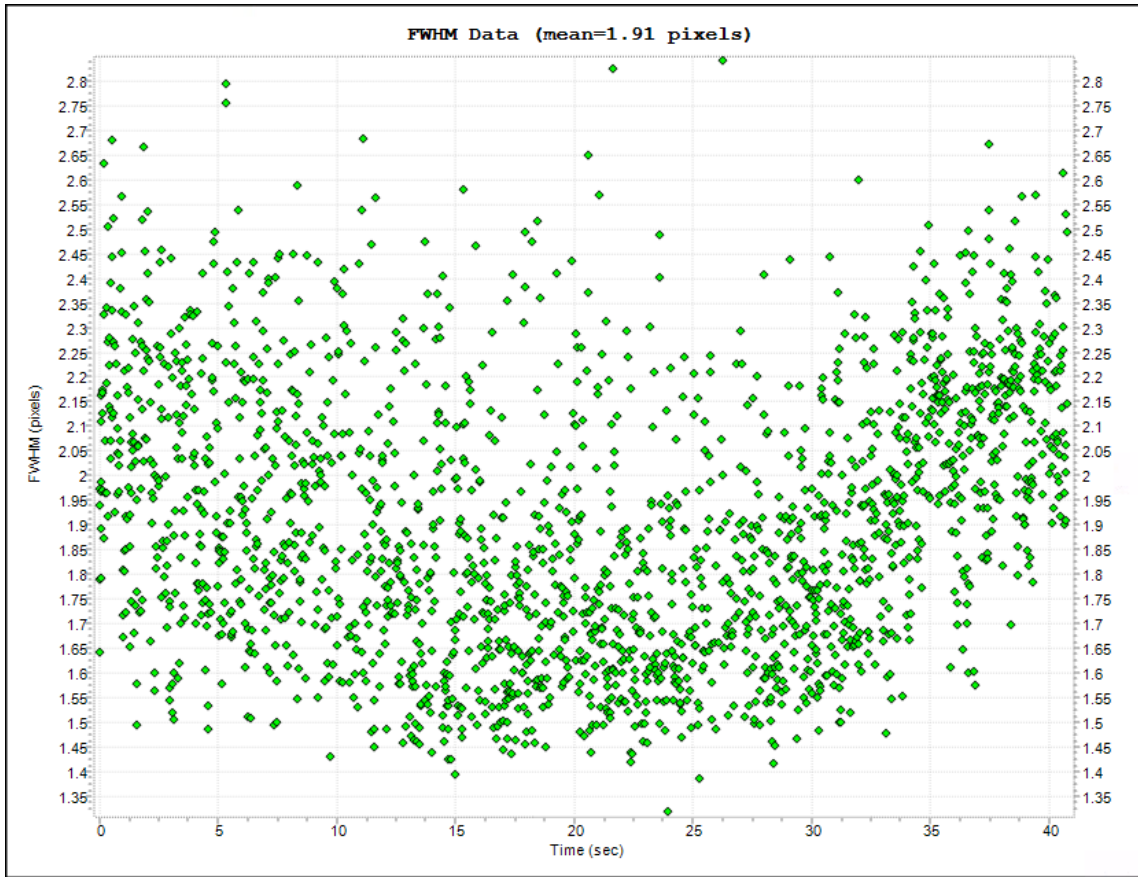


Fig. 71 The important parameter is the FWHM, and must be around 2 pixels as a mean during the measurements with 1/64 and 1/128 sec exposure. The long exposure halo has no effect to the star FWHM.

7 Product terms of use

The use of this product is solely for monitoring the turbulence of the atmosphere, during the night for educational or scientific purposes.

Use of this product involving people's lives is the responsibility of the user and in no way ALCOR SYSTEM will be held liable for injuries to persons or property theft as the use of this system described in this manual.

---oOo---