

# EUDA-2M / 3M “All Sky” Camera

## Installation and user manual

March 20th, 2025 revision



## **Table of Contents**

1	Camera installation .....	3
1.1	System installation .....	3
1.2	Camera optical settings .....	7
1.2.1	Temperature sensor and humidity connector (#1) .....	7
1.2.2	Power connector and RS232 (#2) .....	8
1.2.3	USB connector (#3) .....	11
1.3	Guidelines for cable installation to decrease lightning strike damages .....	11
2	Software .....	14
2.1	Installing the camera Software .....	14
2.2	Embedded Ethernet camera software installation .....	17
3	Using the camera software control .....	22
3.1	Initializing .....	22
3.1	Cooling the CMOS image sensor .....	30
3.2	General Software Setup .....	33
3.3	Camera Control panel .....	35
3.4	Storage of files produced by the camera control software .....	38
3.5	Image hot pixel removal using dark frame image .....	41
3.5.1	Achieving master dark frame .....	44
3.5.2	Residual hot pixels repair/fix .....	47
3.6	Setting the overlay grid .....	48
3.7	Cyanogen Boldwood, or Sentinel cloud sensors link with camera control software .....	51
3.8	Magnitude per square second display image mode .....	52
3.9	Telescope control software link .....	53
4	Trouble shooting .....	55
4.1	Focus .....	55
7.2	Dew inside the dome .....	57
5	Camera maintenance .....	58
5.1	Sphere cleaning .....	58
6	Product terms of use .....	59

# **1 Camera installation**

## **1.1 System installation**

The camera works outdoor, it is totally weather-tight. The camera has 5 positions filter wheel.

The focusing of the camera can be achieved by software remotely, so there is no need to open the camera to achieve focusing.

The CMOS sensor has either 62 million pixels for EUDA-3M with 3.8  $\mu\text{m}$  pixels, or 12 million pixels for EUDA-2M with 4.63 $\mu\text{m}$  pixel size.

Both sensors can be cooled down.

EUDA-2M has Iris, that can be set from f2.8 to f22 by means of remote software. Lens focal length is 4.5 mm

EUDA-3M has Iris, that can be set from f4 to f32 by means of remote software. Lens focal length is 8 mm

The heat from the Sun does not cause daytime stops operation of the camera.

Please do not install the camera near a pollution source (like a chimney). Give as much exposure as possible and avoid obstacles.

This version of camera has heater that can remove external condensation that can occur on sphere surface.

The camera has three anchors on the back, these three ISO M6 not thru threaded holes by 10 mm depth. Use the supplied screws to attach it, or equivalent stainless steel A4 or A2 screw.

The whole camera weights 9.5 Kg (or 16 kg for EUDA-3M), so ensure that camera attachment is achieved properly to the mast.

The N, S, E and W direction is defined by rotating the camera accordingly. This is up to the user to define camera orientation according to its needs. Please perform image capture tests before attaching the camera to the pole.



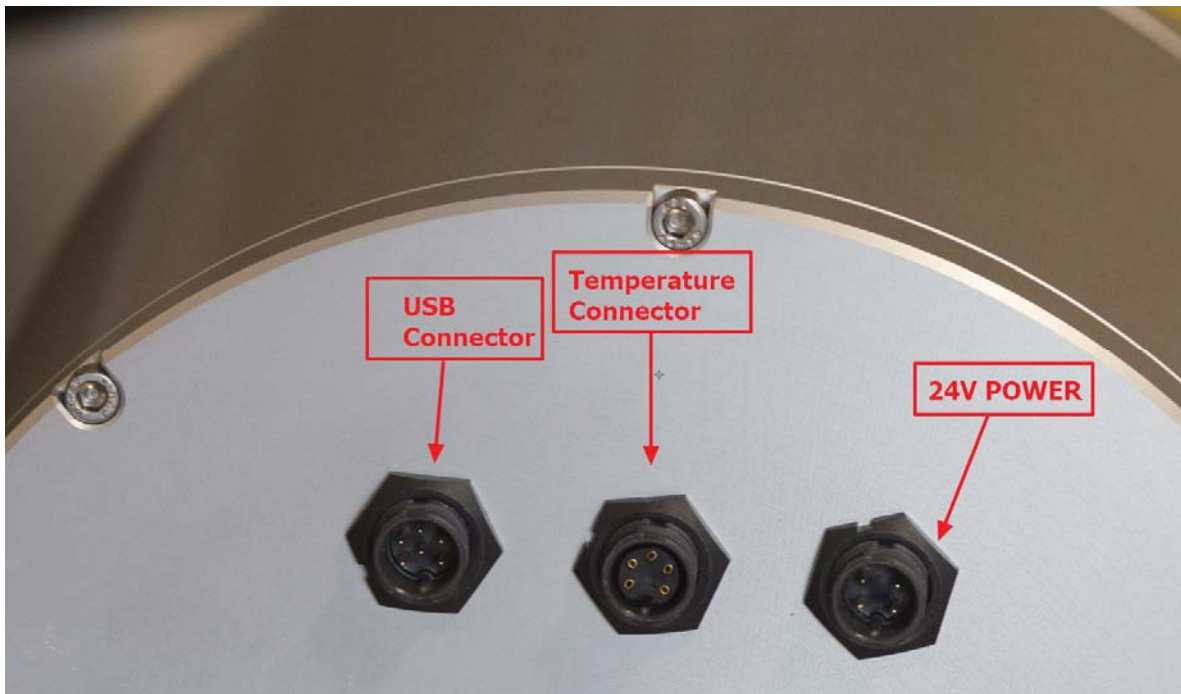


Fig. 2 The position of the three panel connector of EUDA-3M Camera

Let the cables to go straight from the camera. If the cables shall be bent, respect a minimum curvature radius of 100 mm.

The waterproof connectors connect as follows:

- Identify the number of connector pins of the camera, its type (male / female)
- Identify the number of pins of the connector cord and match.
- Identify the key pin inside the camera connector and the key at the connector cord side.
- Apply a rectilinear motion. **If insertion force strength persists, please repeat steps for locating the pin number and key. Excessive force applied to connector can cause the destruction of the connector or a bad connection can damage the camera.**  
**In case of damage, due to trials to attach cable to the wrong connector kind, this will cancel warranty. Please PAY ATTENTION.**

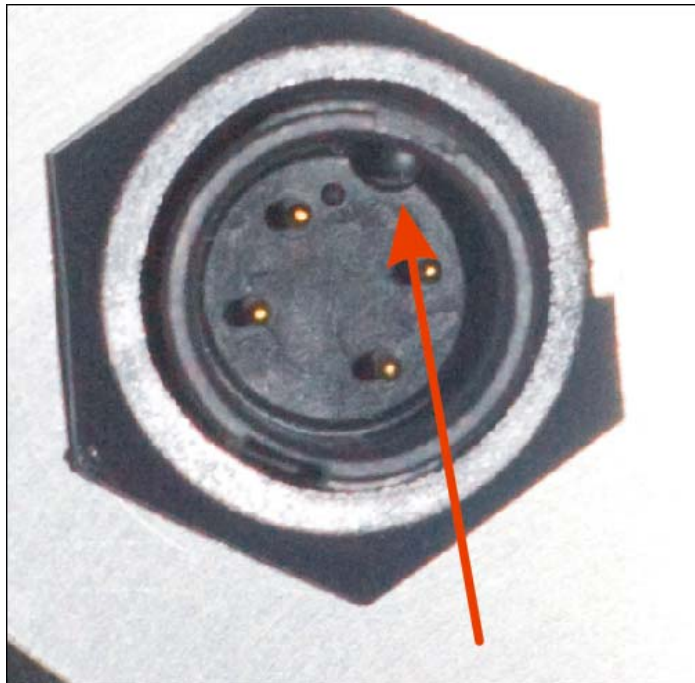


Fig. 3 Key one of the three connectors (24V power connector).



Fig. 4 Push the connector straight



Fig. 5 Then turn the connector's collar in clockwise fashion

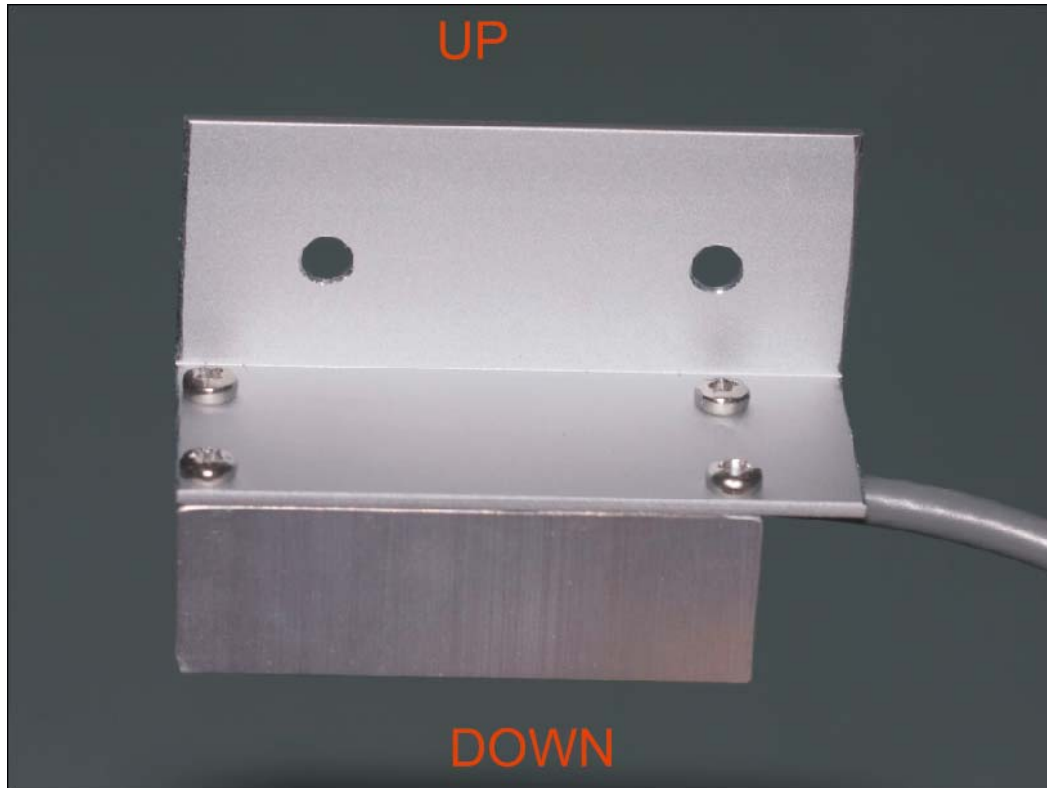
## 1.2 Camera optical settings

The angle adjustment (tilt) of the camera lens with respect to the CMOS detector plane is factory made. It is not possible to perform changes from outside for tightness reasons.

The camera iris and focus position is controlled by external software, as well as the 5-positions filter wheel and camera. So, this is required to run the **Skywatch.exe** to gain access to these settings.

### 1.2.1 Temperature sensor and humidity connector (#1)

It is a 5-pin connector. The probe located at the end of the cord will be placed preferably in the shade, as far as possible from the camera, **and always with two set Ø4mm screws with the direction given in the next frame and horizontally. It put upside down, this can destroy the sensor and warranty will not apply.**



*Fig. 6 up / down and horizontal temperature sensor and humidity directions for installation*

### 1.2.2 Power connector and RS232 (#2)

This is providing power to the camera and RS232 link.

The RS232 connector is a DB9 connector type female and attaches to the serial port of the PC. New PCs are not equipped with serial port, and must be equipped either:

- By a RS232 – USB converter (very moderate cost, FTDI, ATEN devices, avoid Prolific, there are not reliable)
- By RS232 PCI card (Low-cost device, not suitable for laptops)
- By Serial to Ethernet (MOXA devices, very reliable and professional device [http://www.moxa.com/product/nport\\_device\\_server\\_1.htm](http://www.moxa.com/product/nport_device_server_1.htm) ) Product type is Nport.



The power supply is provided as 12V or 24V, 110V 60Hz and 220V 50Hz compliant. The current provided by the PSU is enough to power the camera and the dome heater. Three kinds of plugs are provided on request: EU, US and UK type.



*Fig. 7 24V power supply*

The RS232 control link is **mandatory, and must** be connected to your PC. This gives access to:

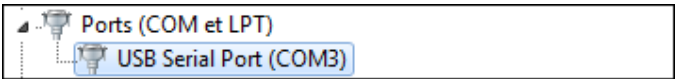
- dome heating control, temperature and humidity thresholds that will turn on and off the dome heating
- setting the heat power to be applied to the dome
- reading temperature of different sensors inside and outside camera
- reading relative humidity sensors from inside and outside the camera
- controlling the lens focus position and iris from f2.8 to f22, and the good focus position is set by Skywatch software on startup (otherwise blurry images will be obtained).

**This is a mandatory way to control the camera. Please connect the RS232 link to your PC.**

At the end of the RS232 cable, a USB to RS232 high quality converter is used Once connected to the PC, the driver is loaded automatically for Windows 10. For other OS, please go here to pick up the proper driver:

<http://www.ftdichip.com/FTDrivers.htm>

Under windows 7, it will appear as UC232R in device manager and driver must appear as follows after driver installation (can be another COM number port).



Under Windows 8, ask windows device manager to update this device from internet, and driver will be installed automatically.

**In the end the PC, must have TWO USB port free for the system**, one for the camera Data stream, and another for this RS232 to USB link.

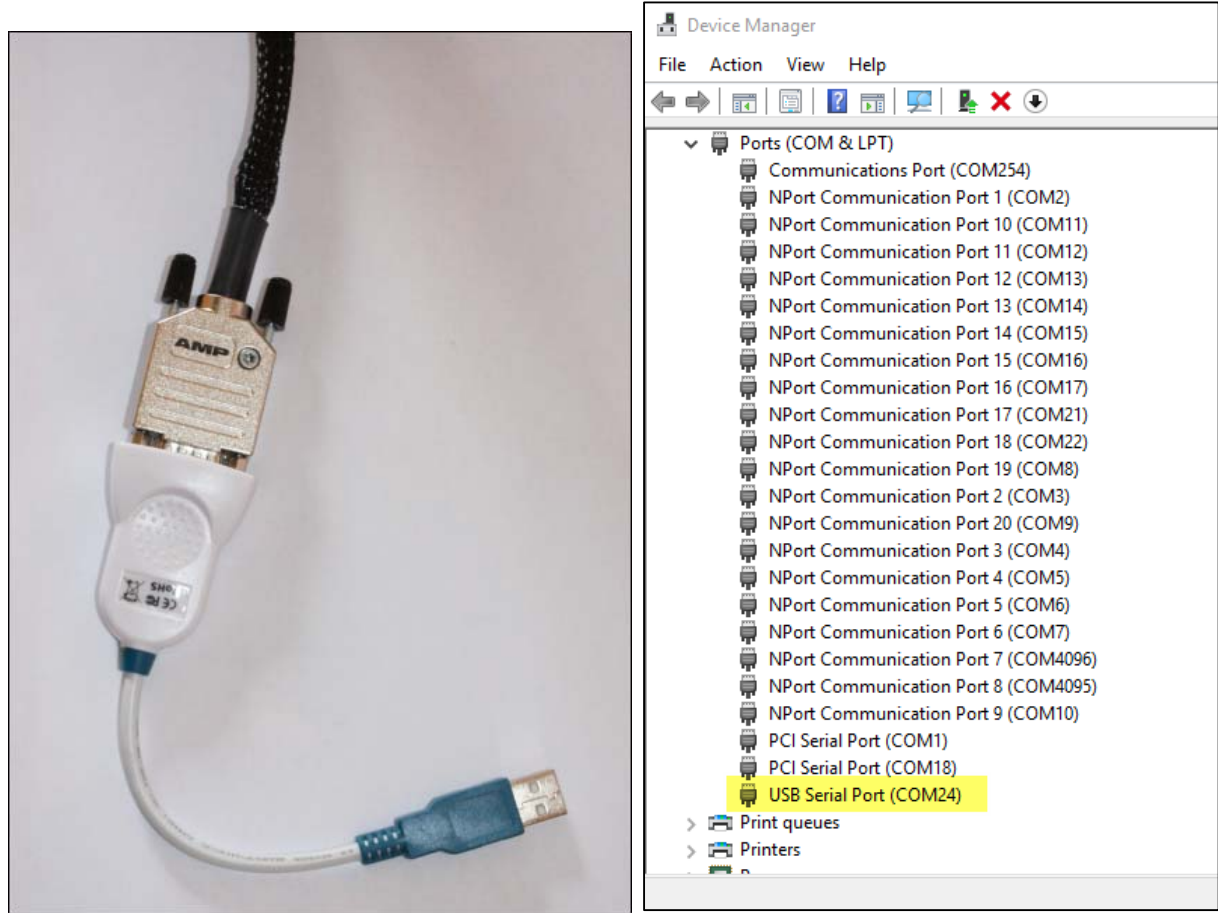


Fig. 8 RS232 to USB converter

Fig. 9 COM port under Device manager,  
warning it can be another number than  
COM24

The device manager properties for this COM port should be seen as follows once connected:

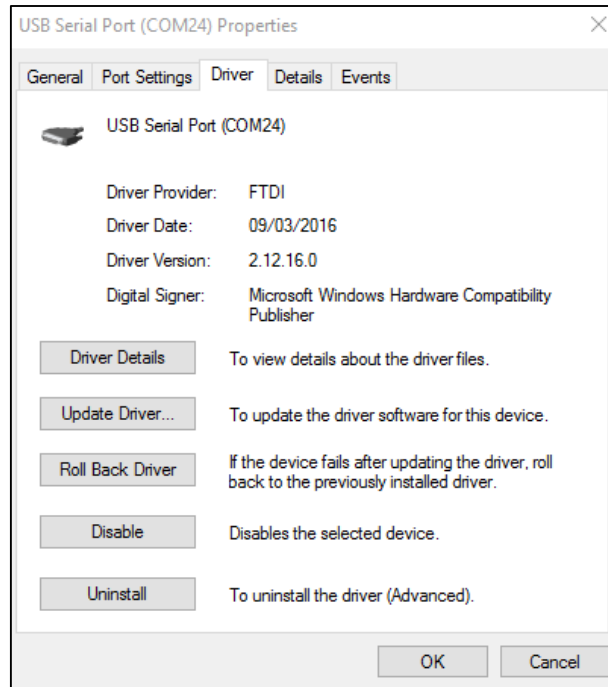


Fig. 10 Serial to USB converter, as it appears in the device manager

### 1.2.3 USB connector (#3)

This is tied up to a 6-pin connector. Please always connect the camera first and then connect to PC second, with camera turned off. Power the camera once the USB connection is tied both sides. The cable that goes to the PC is 20m length and is amplified. Connect USB directly to the PC, not thru hub. The USB camera is very sensitive and does not allow USB ports that reports issues, or been wear off by years of usage. Please be sure to have installed the latest USB chipset software for your motherboard. Do not put other devices on the same USB hub that requires some current.

If the camera is not recognized by the PC, try another USB port.

Despite the camera is USB 2.0, USB 3.0 PCI extra board can be used, and since they are very well powered, most of the time, they work more nicely and more reliably than embedded motherboard USB controllers. This is an important step, otherwise, the PC can download images for some hours, and then will not anymore because of the USB link being not reliable.

Alcor-System has a long experience connecting USB devices using a 20m extender, and when it fails, it is always due to PC issues, with USB chipset drivers, USB hub badly powered, USB port been jeopardized by several Electro Static Discharge (ESD).

## 1.3 Guidelines for cable installation to decrease lightning strike damages

Attention must be taken against thunderstorms and close-by lightning. If your site is prone to hits from lightning strikes and surge power, user shall pay attention to them. This might damage the 20m USB cable or the internal environment board (RS232 link). In rare case, this can destroy/damage also the camera image sensor electronic, that is very expensive to replace. As peer our term and sales,

this kind of damages are not covered by the warranty and our company has all the means to assess the cause of the damages. Care must be taken to insulate the camera from nearby lightnings and associated deleterious effects that can extend to a large range from ground impact.



Fig. 11 *Lightning strike extended damage area by induction effects*

It is strictly unadvised to coil/loop the USB or the power-RS232 cable because it is too long, like in the picture below. This can be convenient to reduce the footprint of the cables, but this can lead to disasters and failures.

When a lightning strike occurs, even, say, at up to 100m/200m from the camera, a huge magnetic field change is produced in a very short amount of time. The cable, put in coils, can turn into a voltage this magnetic field change, that will be directly multiplied by the number of cable loops. This is called induction (please read this [https://en.wikipedia.org/wiki/Electromagnetic\\_induction](https://en.wikipedia.org/wiki/Electromagnetic_induction) for more info).

At the end of the cables, a voltage higher than 30 000 volts can be created and destroy all camera electronics or damage electronic boards, in a way that image data transfer from camera to the PC can be halted in a random fashion. It can be difficult to assess the root cause of loss of camera reliability. Our cameras are tested in factory outdoors during several days and can output several thousands of images without a single glitch (or missing image).

The document below can be read also

<https://arcca.com/wp-content/uploads/2018/07/When-Lightning-Strikes-How-Electrical-Devices-Are-Affected.pdf>



Fig. 12 **Avoid to coil the USB and Power cable this way,**  
*this increases greatly surge power and may destroy the camera*

It is sometime a good advice to use services from an electrical company that can help to reduce the risk of lightning strikes damages by proper earthing/grounding schemes and surge protection. Sometime, fiber data link between the camera and the PC can be used to remove of induction damage risks.

## 2 Software

### 2.1 Installing the camera Software

#### 2.4. Installing the camera control software (both USB and ethernet versions)

The software must be downloaded here:

[http://www.alcor-system.com/common/allSky/sw/setup\\_skywatch.exe](http://www.alcor-system.com/common/allSky/sw/setup_skywatch.exe)

You must have administrator credentials to perform software installation.

This is updated every 2 months and this is the software used to control the camera, click on "**setup\_skywatch.exe**"

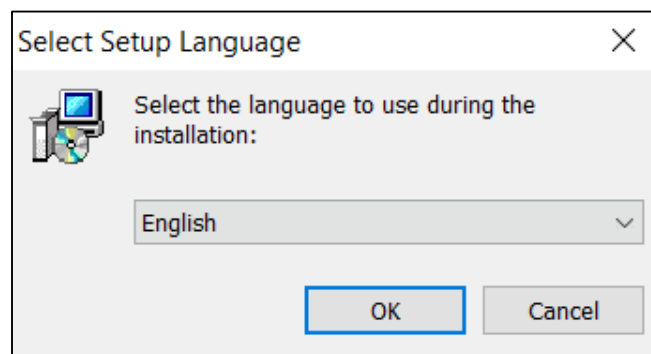


Fig. 13 *Select language*

Select language. Then select camera, in this case EUDA 2M/3M camera

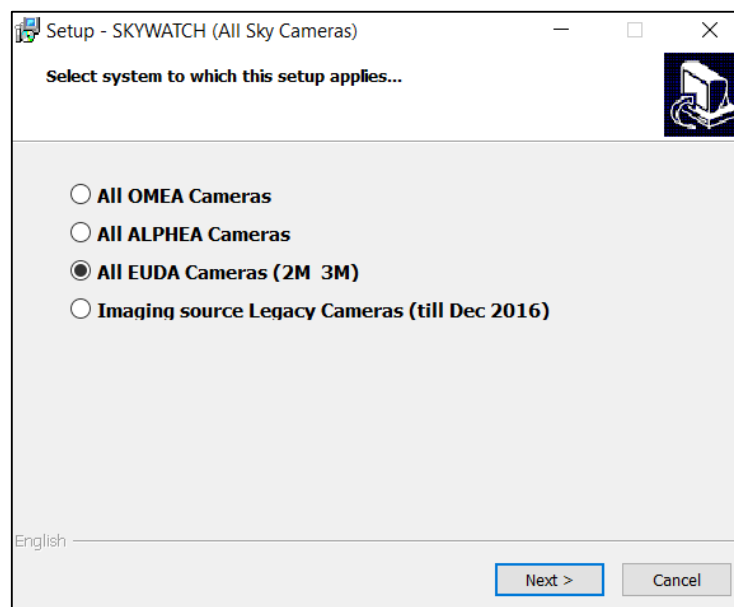


Fig. 14 *Select EUDA (2M or 3M) Camera*

Installation is quick and trivial. Please accept all installation modules, also XVID encoder that will allow you to create time lapses.

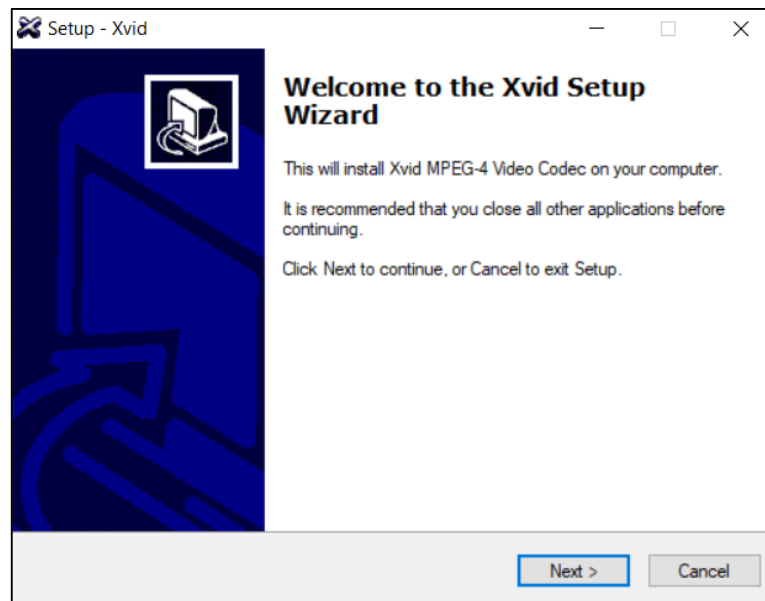


Fig. 15 Xvid setup, this allows to build time-lapse

Then comes the camera driver low level installation. Please install it

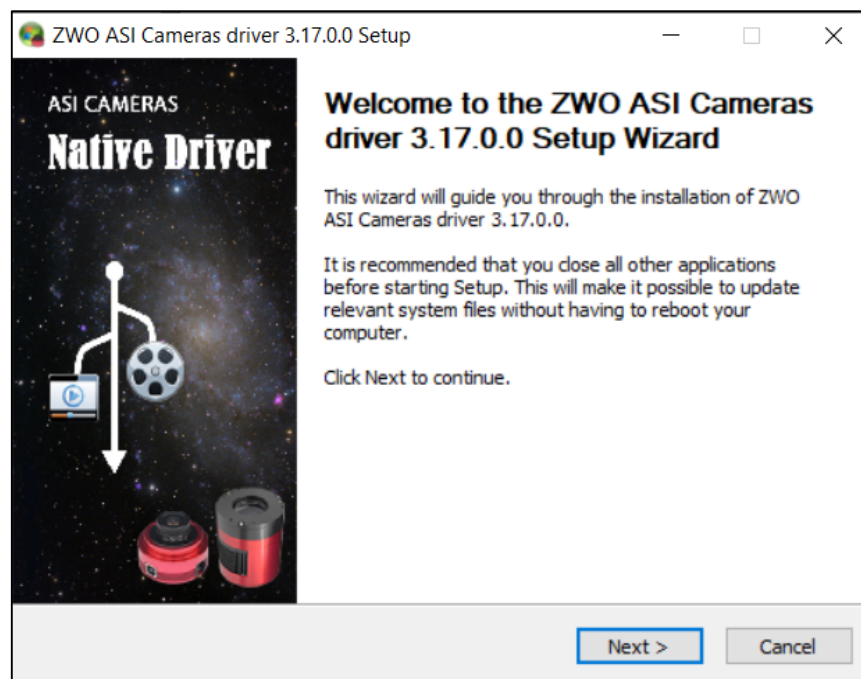


Fig. 16 ZWO ASI camera low level driver installation is MANDATORY

Then accept driver to be installed, click "Install"

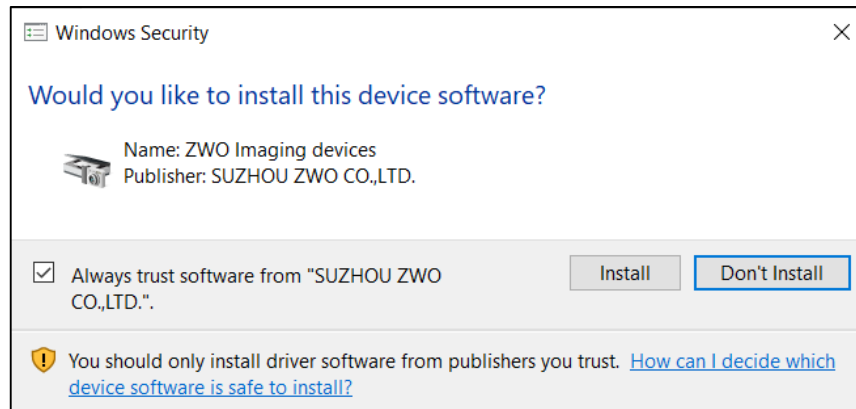


Fig. 17 ZWO ASI camera low level driver installation is MANDATORY

Once the installation is completed, and camera connected and powered, the device manager shows the presence of the camera, either ASI 6200MM (EUDA 3M) or ASI 294MM (EUDA 2M).

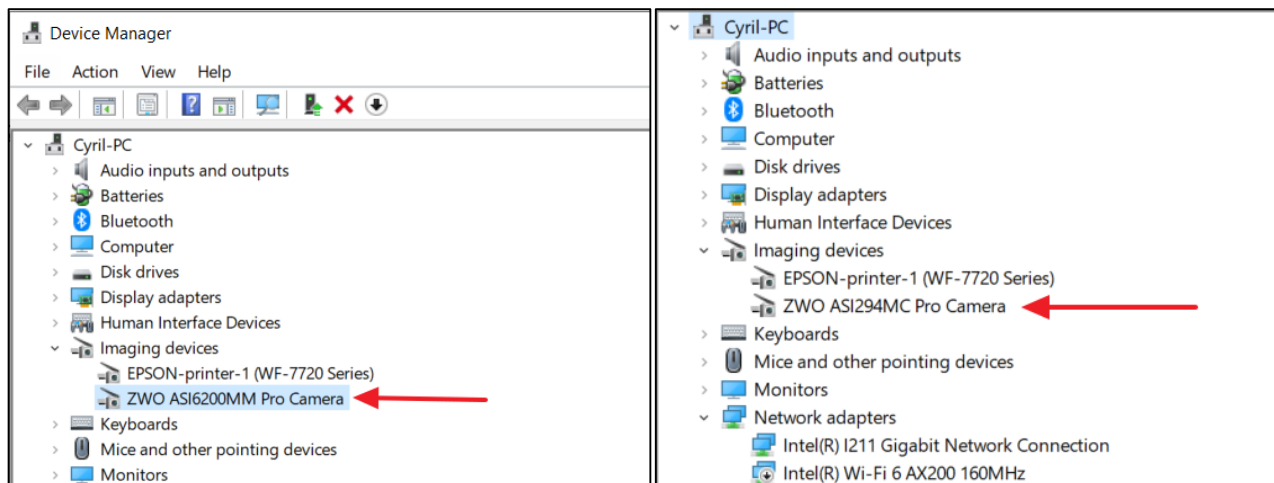


Fig. 18 Device manager

The installation software creates an icon to your desktop. To start it, double click it, the camera control software will start.



Fig. 19



## 2.2 Embedded Ethernet camera software installation

Warning: basic knowledge of IP LAN setup is required.

An additional step is required for Ethernet cameras, please download software here

<https://www.silextechnology.com/connectivity-solutions/device-connectivity/ds-600>

### [Remote USB Device Connectivity over Network - DS-700](#)

This is a USB to Ethernet converter that is embedded into the camera.

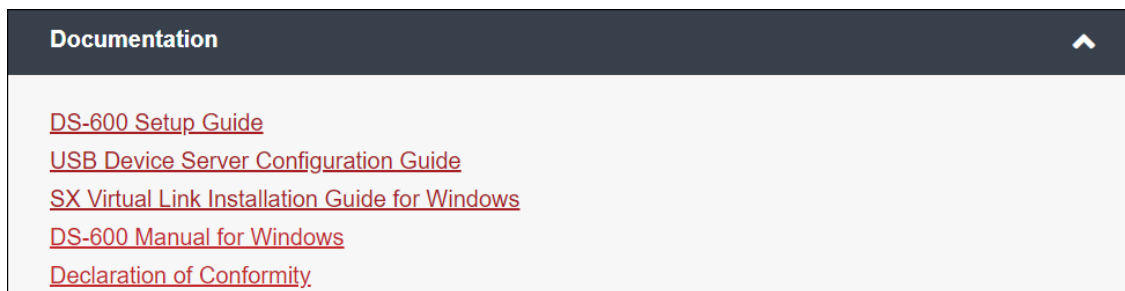
This can be DS-600 for camera produced till 2023 and DS-700 for camera produced from 2024. This is the same software.

The “SX-Virtual Link for windows” must be downloaded and installed.

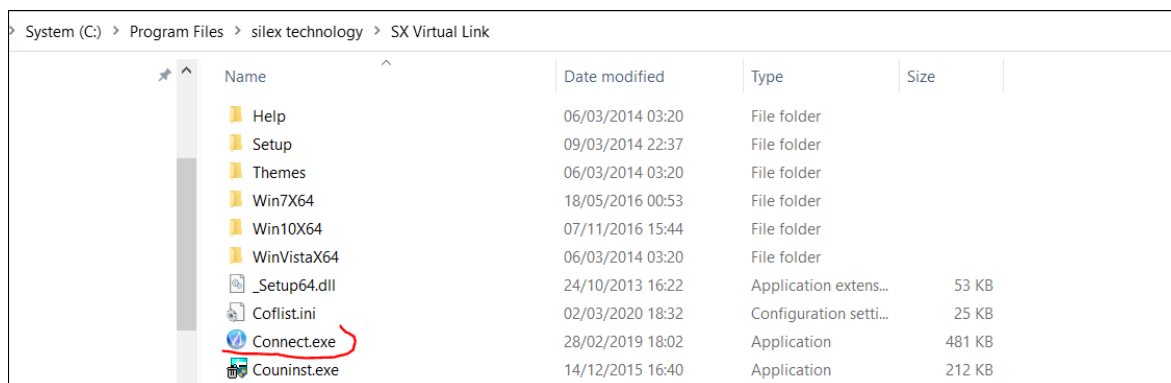
**BE SURE THAT FIRST USB DRIVERS OF THE CAMERA ARE INSTALLED** prior doing this installation and setup with the ethernet camera. This latter must be connected and powered.

Support			
<b>Software:</b>			
<a href="#">USB Device Server Setup</a>			
Click on the Software Application to download the latest software file for your product.			
<b>SX-Virtual Link Downloads</b>			
Click the above link or on one of the options below:			
Software Application	Version	Date	Supported Operating Systems & Notes
<a href="#">SX-Virtual Link for Windows</a>	4.4.2 <a href="#">Release Notes</a>	5/26/20	Improved the special key control function for Audio and HID devices in Windows 10.  Fixed a problem preventing devices from having the ability to disconnect when running specific anti-virus software.  Fixed a problem that was causing devices to take a longer time to connect when running specific virtualization software.

More documentation can be obtained here:



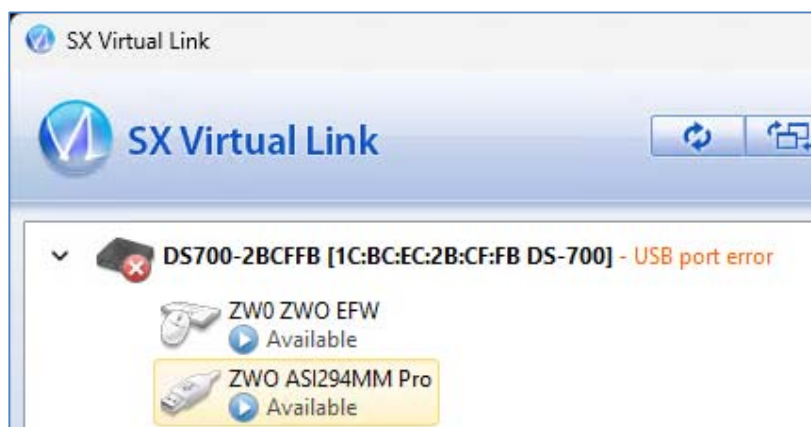
Once installed, the **connect.exe** software (or “SX virtual Link”) must be started.



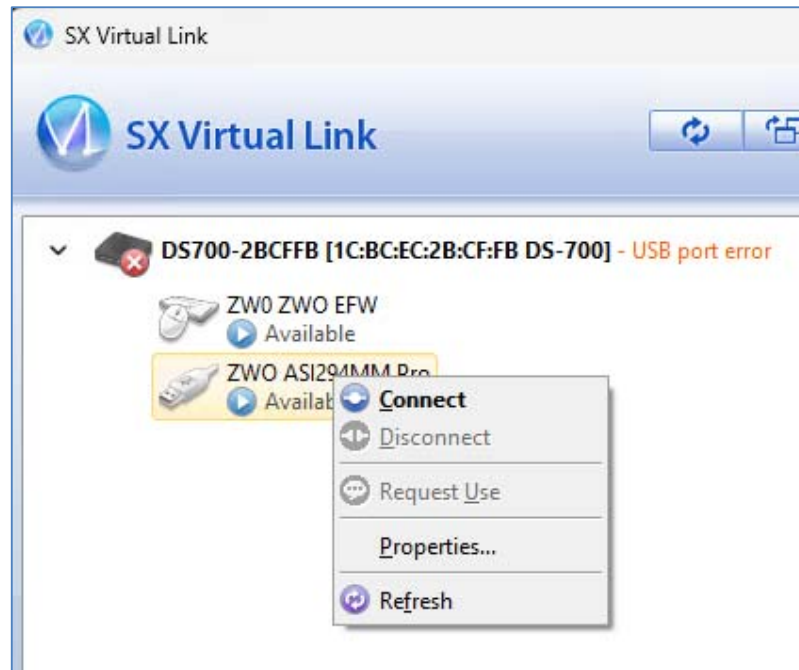
Once “connect.exe” software is started, a panel appears.

The default IP address of the camera (embedded DS-600) is 192.168.1.28 (or something in the 192.168.1.x sub network, X is a figure variable from 2 to 254) or can be set by DHCP server.

The **SX virtual link** software is able to find any device on the network that has the same subnet address as the camera (or embedded DS-600 or DS-700).

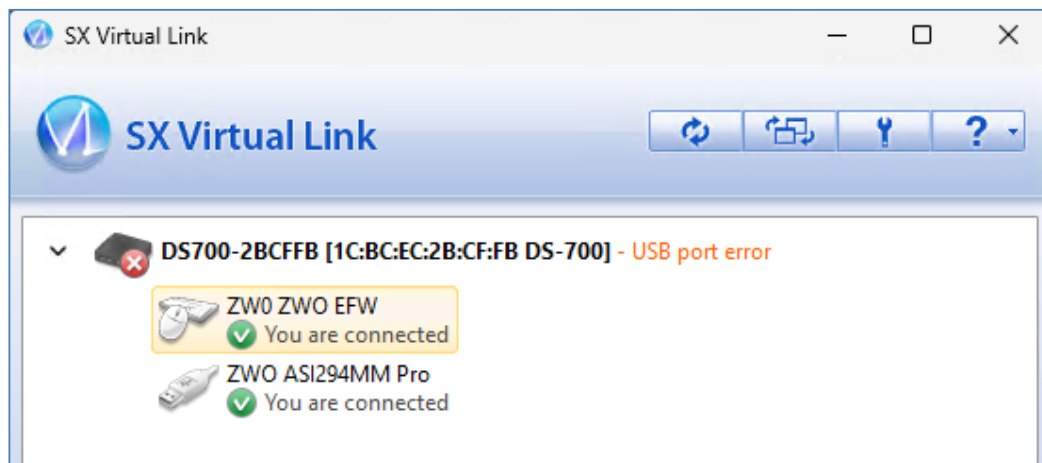


To get the camera connected, right click on the camera and click “**Connect**”. Proceed the same way with ZWO ZWO EFW that is the embedded filter wheel.

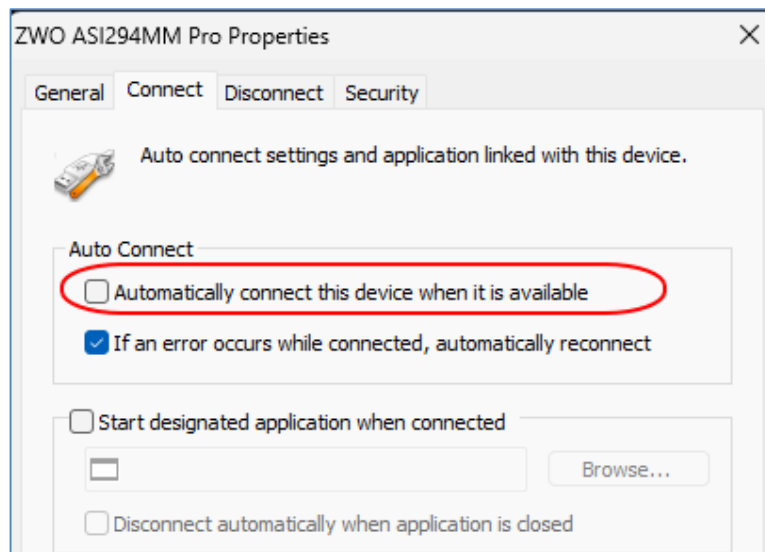


The filter wheel embedded into the EUDA camera must be connected also. It does not require any driver because this is an HID Windows device.

The ALL-Sky camera is now connected:



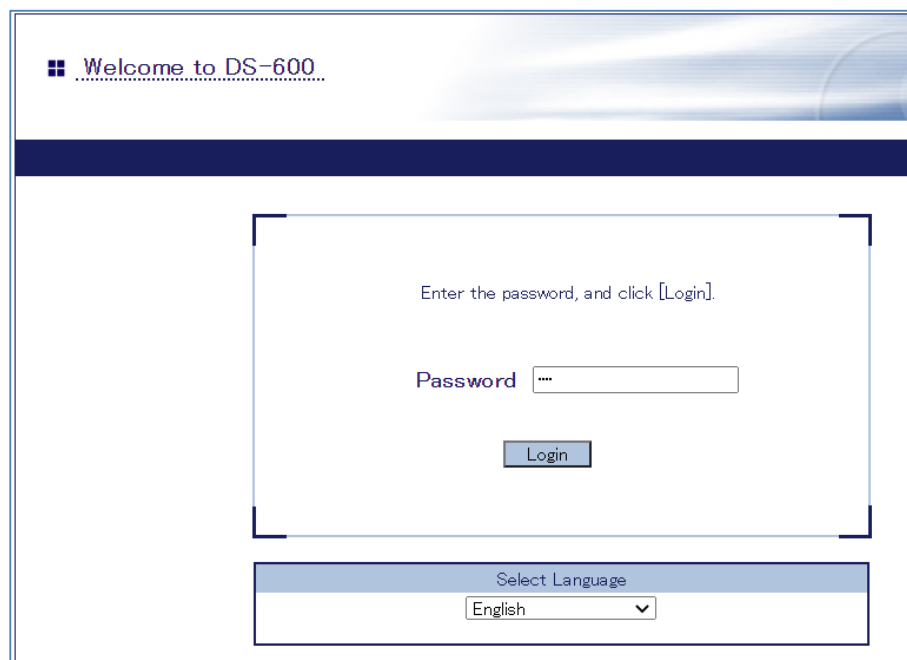
This is possible to auto-connect the camera and the filter wheel, right click on the device, then the pop-up menu shows a property menu. Then go the **"Connect"** tab.



To set/tune the USB to Ethernet device, this link provides access to the configuration panel

<http://192.168.1.28/login.htm?lang=eng>

The password is either to be defined on first access to the web interface or to be provided and is by default "1234" or "root"



System status and other information and settings can be accessed and modified.

System Status	
System Status	
System Status	
Name	Status
Series Name	silex
Product Name	DS-600
Version	1.4.1
MAC Address	84:25:3f:94:33:fa
Host Name	DS600-9433FA
IP Address	192.168.1.28
Subnet Mask	255.255.255.0
Default Gateway	192.168.1.1
DNS Server (Primary)	192.168.1.1
DNS Server (Secondary)	8.8.8.8
Current Time	1970/01/01 09:34:35

Note: for Linux user, please go to this page and request for Linux SDK to the USB to ethernet converter company that designed it :

<https://www.silextechnology.com/sx-virtual-link-sdk-linux>

The camera is now visible on the window device manager when connected to DS-600:

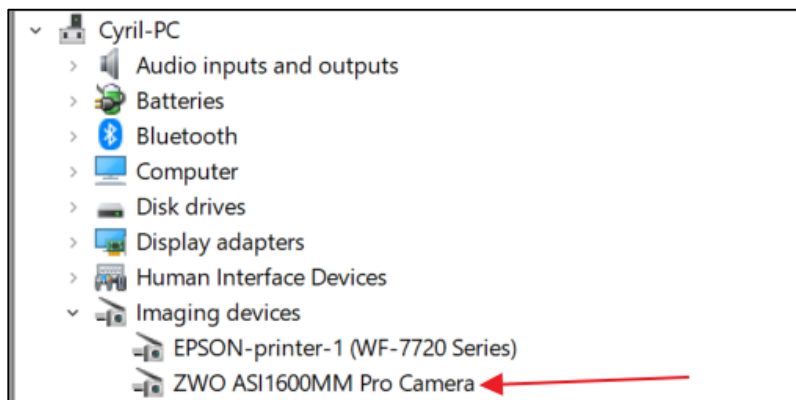


Fig. 20 Camera detected in device manager of Windows 10

More information can be found here:

Or locally here:

***C:\Program Files\silex technology\SX Virtual Link\Help***

With Silex DS-700 model, this message might be visible with “USB port error” and a white cross into a red dot. Please ignore the message and the icon this has no impact on camera operation.

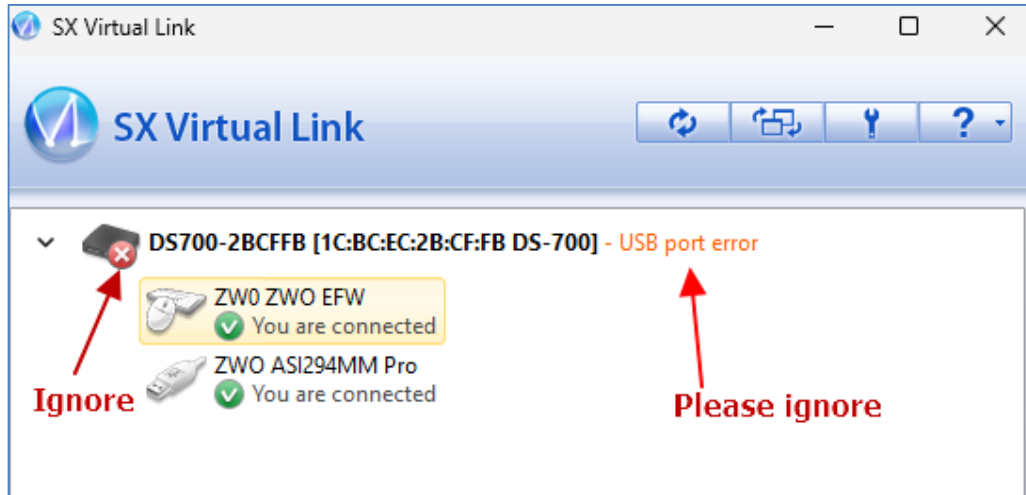


Fig. 21 Silex DS-700 panel (OMEA 5 or OMEA 9 cameras)

***- Software installation is now completed -***

### **3 Using the camera software control**

This software is fairly intuitive; the documentation will focus on features that are considered difficult to use, and about the startup procedure.

Access to the menu bar is located in the upper left, and a flying window in the foreground can quickly adjust the software settings.

#### **3.1 Initializing**

***This is an important section, please follow it carefully.***

By default, the software sets to simulation camera, and this has to be changed to the proper camera. Click ***“Camera Setup”***:

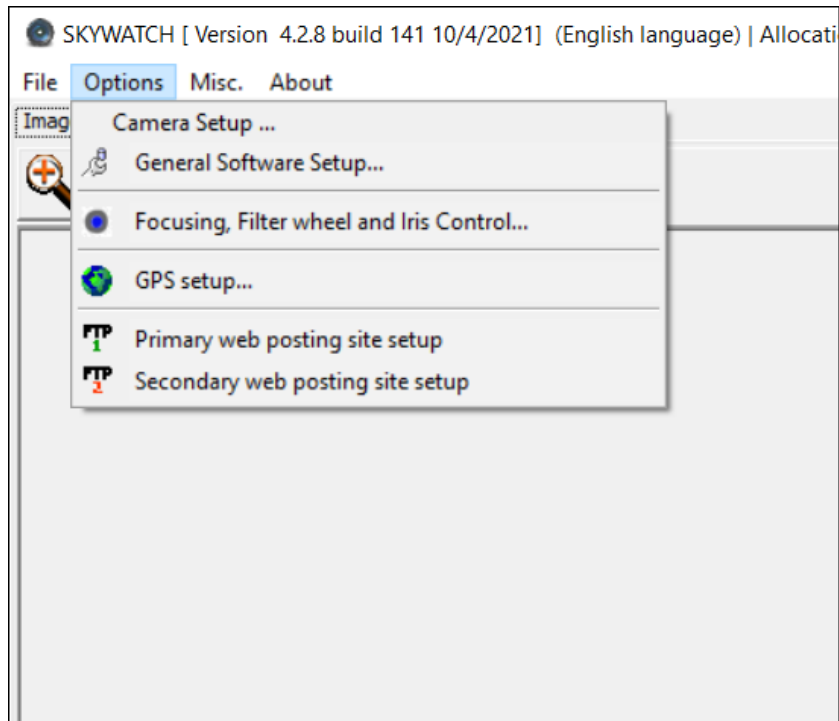


Fig. 22

Then comes the filter wheel setup, assign/enter filter names (as ordered) and then put focuser encoder offset steps that can change filter to filter, if filter thickness is not the same.

For EUDA-2M, the focus range is 1200 to 1400 ADU, for EUDA-3M the offset focuser range is from 4000 to 4500 ADU.

A more accurate figure is provided by ALCOR-SYSTEM on camera delivery.

	Filter name	Focuser encoder step
Filtre #1	L filter	1300
Filtre #2	R filter	1300
Filtre #3	G filter	1300
Filtre #4	B filter	1300
Filter #5	Neutral	1300

OK Cancel

Fig. 23 Filter's name and focus offsets

Select **"EUDA-2M/3M Camera"** Inside the **"Select among available camera"** group box, the camera name must be visible, if not the camera is not recognized by the system (check cables and power).

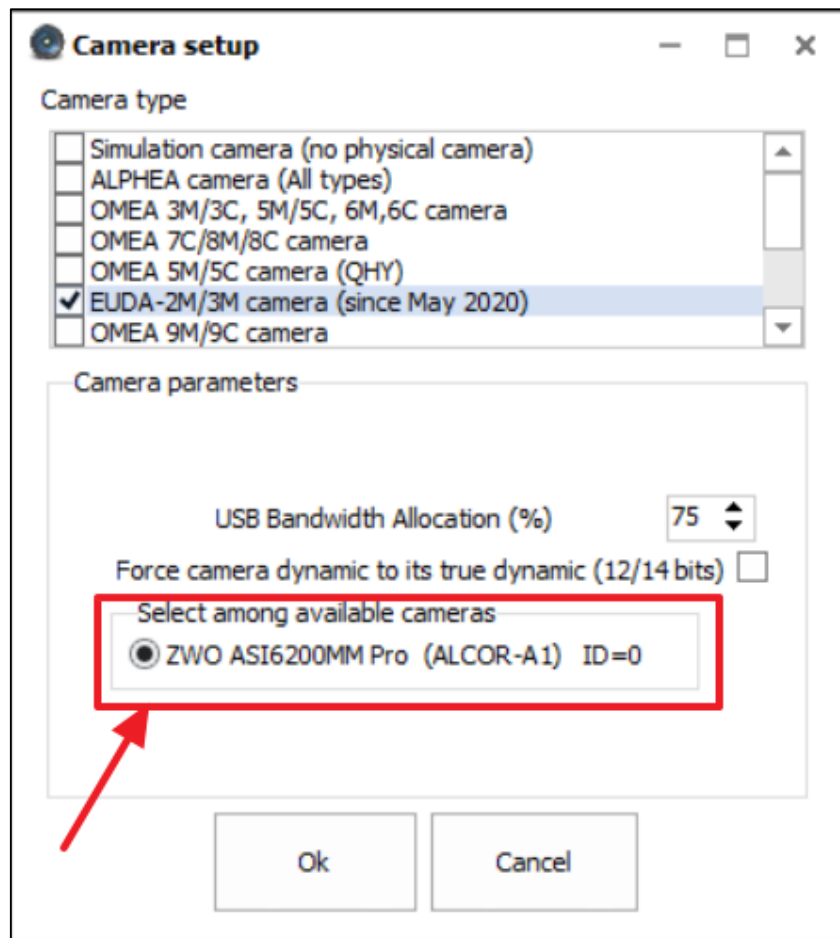
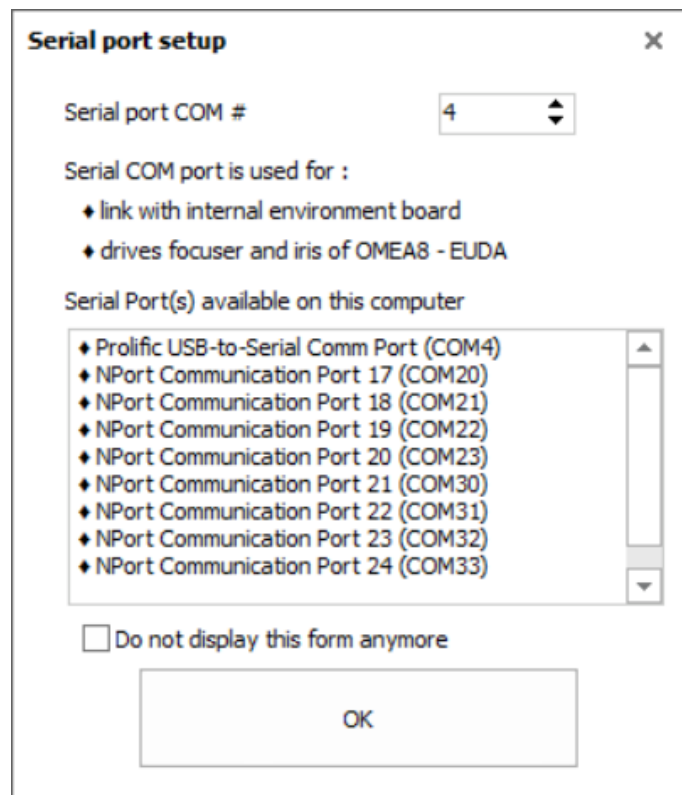


Fig. 24

The USB camera bandwidth can be set from 40 to 100%. Please avoid to use figures higher than 75%

Finally the COM setup panel comes, set the serial port COM number as it was find in the section 1.2.2 of this manual.





If not input properly set to the correct figure, focusing and auto iris will not be possible to achieve, not any access to the weather board control.

Open then *“Options/Dome Heating control / CMOS cooling”*

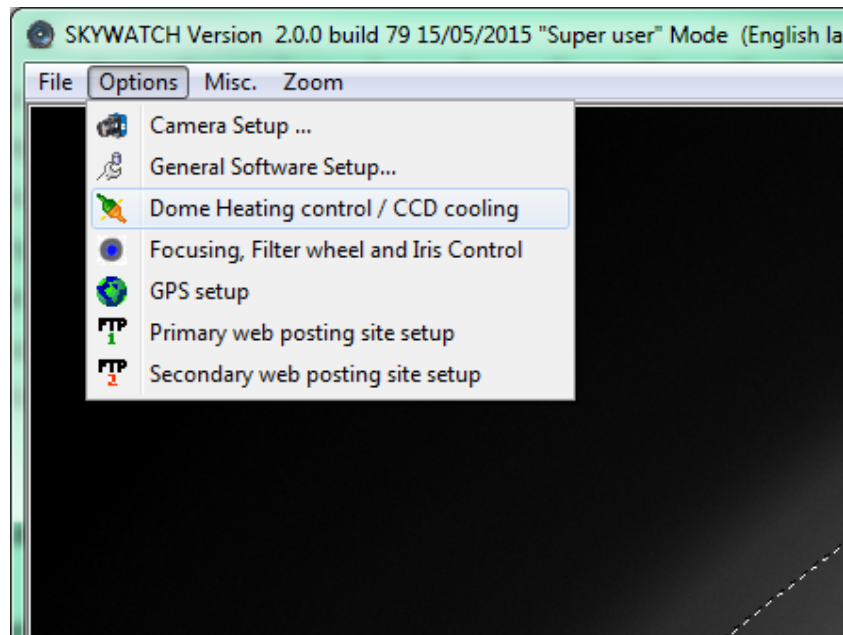


Fig. 25

The Serial RS232 COM port must be set to the right value (depending on your system’s settings) and click “Connect”. **If the RS232 link is not working, camera focus, and iris control will not be possible and camera will provide blurred images!**

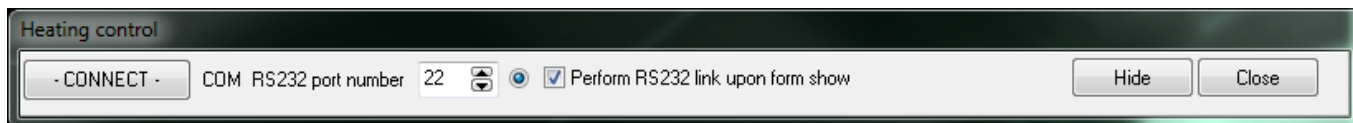


Fig. 26

If an error occurs (not cable tied, or wrongly set port COM), this message will be displayed:

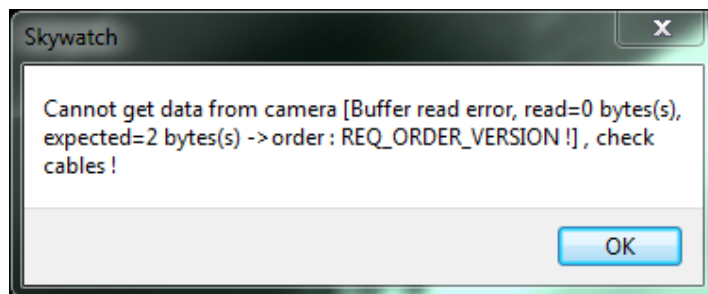


Fig. 27

Otherwise, the window expands and information is displayed as follows:

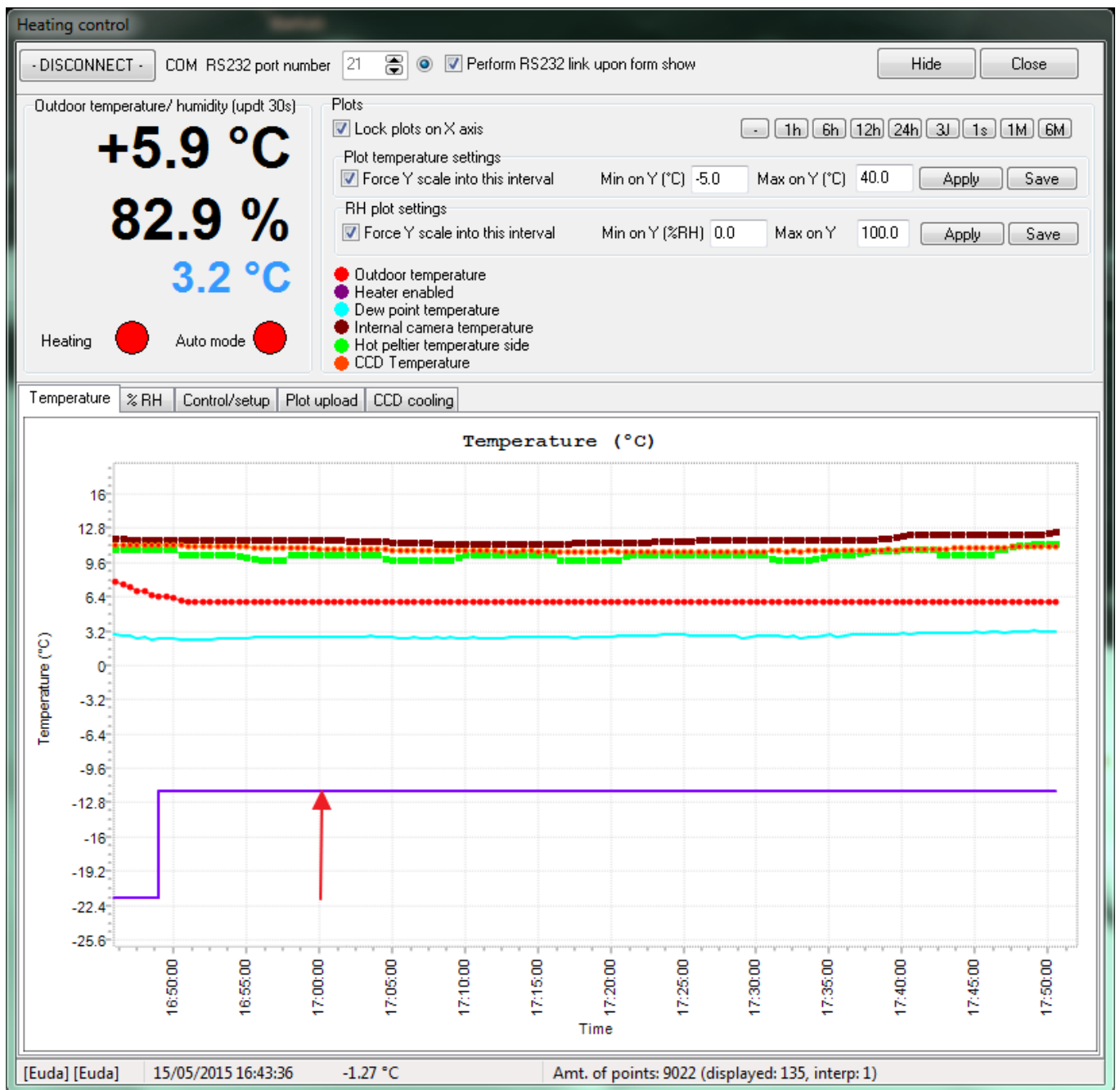


Fig. 28 Red arrow, with purple curve going high state means that dome heater is running

Top left shows outdoor temperature and humidity. Those figures will trigger the dome heating. Also the temperature of the CMOS image sensor, hot dissipater plate behind the CMOS image sensor and inner camera are reported.

When the violet curve goes up (vertical red arrow), it means that the dome heating has been enabled, and stay down when the dome heating is disabled.

The humidity tab, shows the outdoor relative humidity level and inner camera relative humidity. This is not the humidity that sees the CMOS image sensor, this later is enclosed inside a very tight chamber.

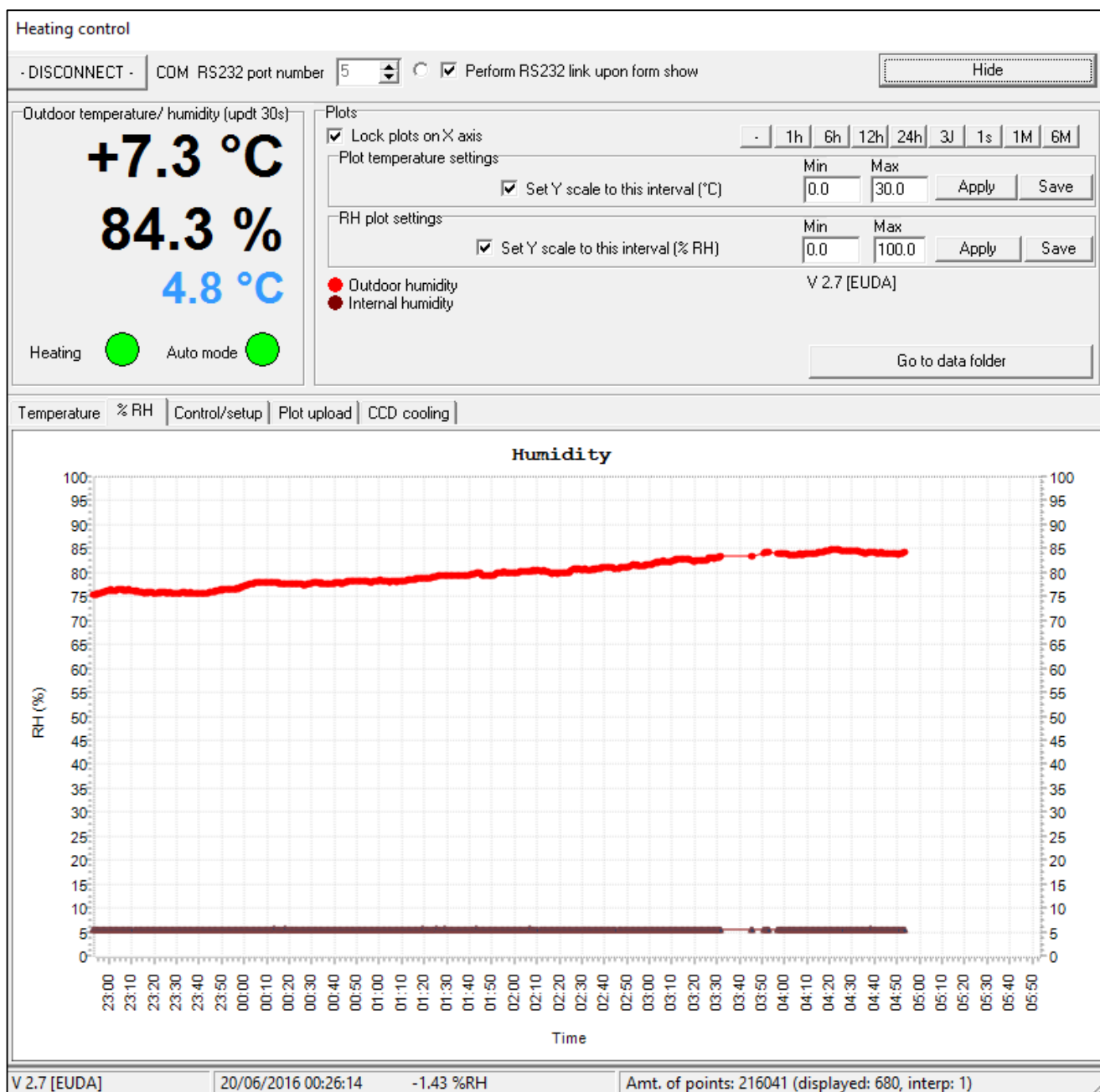


Fig. 29

The inner camera relative humidity (brown curve) shall never be above 60% otherwise, dew may form in the inner side of the dome, and this jeopardizing image quality. On delivery, the camera inner humidity can be very low, less than 5% because of desiccant presence inside the camera.

The **control/setup** tab allows to setup threshold temperature and humidity to allow dome heating to be turned on or off.

Temperature / humidity auto params

Temperature threshold (°C)  Ts  
 Humidity threshold (%RH)  RhS  
 Power Max (%)  14.4 W

If temperature is below Ts and relative humidity is above RhS, then dome heating will start automatically when auto checkbox is checked

If temperature is above Ts+2°C and relative humidity is below RhS-5%, then heating will stop.

Resistance (Ohms)  Voltage (V)

Controls

☒ Auto Mode Heating  
☐ Only during Nighttime (Sun set and rise)  
☐ Force heating

Humidity detector adjustments

Gain (ADU/65535)   
 Offset (ADU/65535)

Log activity ☐ Poll system each sec

```

2015/05/15 23:27:55.168 : GetData-> 6.8°C (2243) 90% (6894) heater enabled:1 Autoheater:1 Power:40%
2015/05/15 23:28:25.170 : GetData-> 6.8°C (2247) 90% (6880) heater enabled:1 Autoheater:1 Power:40%
2015/05/15 23:28:55.093 : GetData-> 6.8°C (2247) 90% (6879) heater enabled:1 Autoheater:1 Power:40%
2015/05/15 23:29:25.338 : Buffer read error, read=0 bytes(s), expected=2 bytes(s) ->order : REQ_GET_VOLTAGE !
2015/05/15 23:29:25.463 : COM Exception -> Buffer read error, read=0 bytes(s), expected=2 bytes(s) ->order : REQ_GET_VOLTAGE !
2015/05/15 23:29:25.620 : GetData-> 6.7°C (2238) 90% (6889) heater enabled:1 Autoheater:1 Power:40%
2015/05/15 23:29:55.350 : Buffer read error, read=0 bytes(s), expected=2 bytes(s) ->order : REQ_GET_VOLTAGE !
2015/05/15 23:29:55.354 : COM Exception -> Buffer read error, read=0 bytes(s), expected=2 bytes(s) ->order : REQ_GET_VOLTAGE !
2015/05/15 23:29:55.398 : GetData-> 6.7°C (2245) 90% (6894) heater enabled:1 Autoheater:1 Power:40%
2015/05/15 23:30:25.364 : Buffer read error, read=0 bytes(s), expected=2 bytes(s) ->order : REQ_GET_VOLTAGE !
2015/05/15 23:30:25.374 : COM Exception -> Buffer read error, read=0 bytes(s), expected=2 bytes(s) ->order : REQ_GET_VOLTAGE !
2015/05/15 23:30:25.534 : GetData-> 6.8°C (2250) 90% (6885) heater enabled:1 Autoheater:1 Power:40%
2015/05/15 23:30:55.380 : Buffer read error, read=0 bytes(s), expected=2 bytes(s) ->order : REQ_GET_VOLTAGE !
2015/05/15 23:30:55.385 : COM Exception -> Buffer read error, read=0 bytes(s), expected=2 bytes(s) ->order : REQ_GET_VOLTAGE !
2015/05/15 23:30:55.428 : GetData-> 6.7°C (2251) 90% (6881) heater enabled:1 Autoheater:1 Power:40%
2015/05/15 23:31:25.282 : GetData-> 6.8°C (2247) 90% (6864) heater enabled:1 Autoheater:1 Power:40%
2015/05/15 23:31:55.256 : GetData-> 6.8°C (2254) 90% (6879) heater enabled:1 Autoheater:1 Power:40%
  
```

Fig. 30

Do not have the dome heating working all the time, during the day, for instance, this is not very useful and advised, this can wear out the O-ring sealing quicker than expected.

The heating of the sphere is achieved throughout a set of resistors placed under the sphere base. It can defog or defrost the outside side of the acrylic sphere. The inner side shall not have dew, please refer to the inner humidity sensor figure.

The system is autonomous (works without link to PC and without user's supervision). It sets out the conditions when temperature and humidity levels enable occurrence of water condensation.

As soon as the temperature is below a certain value, and moisture above another value, the heating system is automatically activated. These levels are named **temperature and humidity levels**.

By default, factory set, the default threshold temperature is set to +7 ° C and humidity level to 90%. These thresholds may be inappropriate for a given site and can be adjusted by user input.

Similarly, the heating power is set by default to 50% duty cycle, it can be changed according to site and circumstances.

**Beware, if this window is closed, recording data cannot occur anymore. We recommend that you simply hide it. Nevertheless, dome heater activation is achieved by the camera alone, without any link to the PC.**

Finally, it is possible to transfer these plots to website for remote checking.

User account

Host or IP address	ftp.astrosurf.com
User/login	cavadore
Password	••••••
Remote folder	/www/meteo/current

Humidity (%RH) ☒

Update interval (Minutes)

☒ **Enable image posting using FTP**

Fig. 31 Website setting for temperature and humidity plot posting

### 3.1 Cooling the CMOS image sensor

The CMOS image sensor of this camera can be cooled. The benefit is noise reduction and no hot pixels anymore.

This is not necessary to cool down the camera during the day, because exposure time is short enough to avoid any hot pixels and noise increase, so do not cool down the camera during the day.

The cooling CMOS image sensor tab lets you to setup CMOS image sensor temperature, to minimize hot pixels and dark current noise.

Cooling CMOS image sensor at -10°C is sufficient, and must be used only during the night where long exposures are achieved.

Maximum exposure to avoid star trailing is between 20 and 25sec.

The mean power of the CMOS image sensor cooling must not exceed 60% of the power available for cooling.

During the day, CMOS image sensor cooling must be inactive. This panel has all the features to allow automatically the sensor cooling to be inactive during the day.

During the night, the temperature to reach can be entered by the user, and during the day, it is set to 30°C, that will never be reached because the system cools the CMOS image sensor, and cannot warm it up. The CMOS image sensor temperature will be let to follow then inner environment camera temperature.

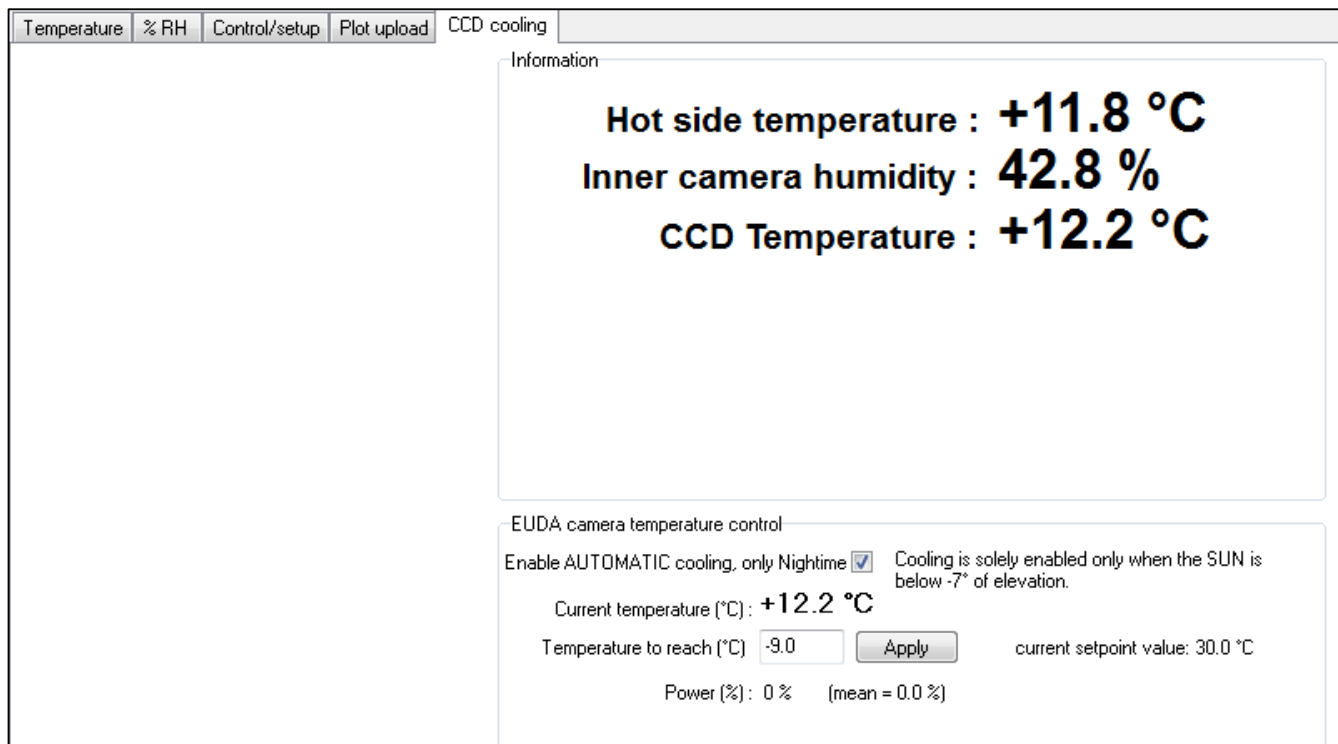


Fig. 32

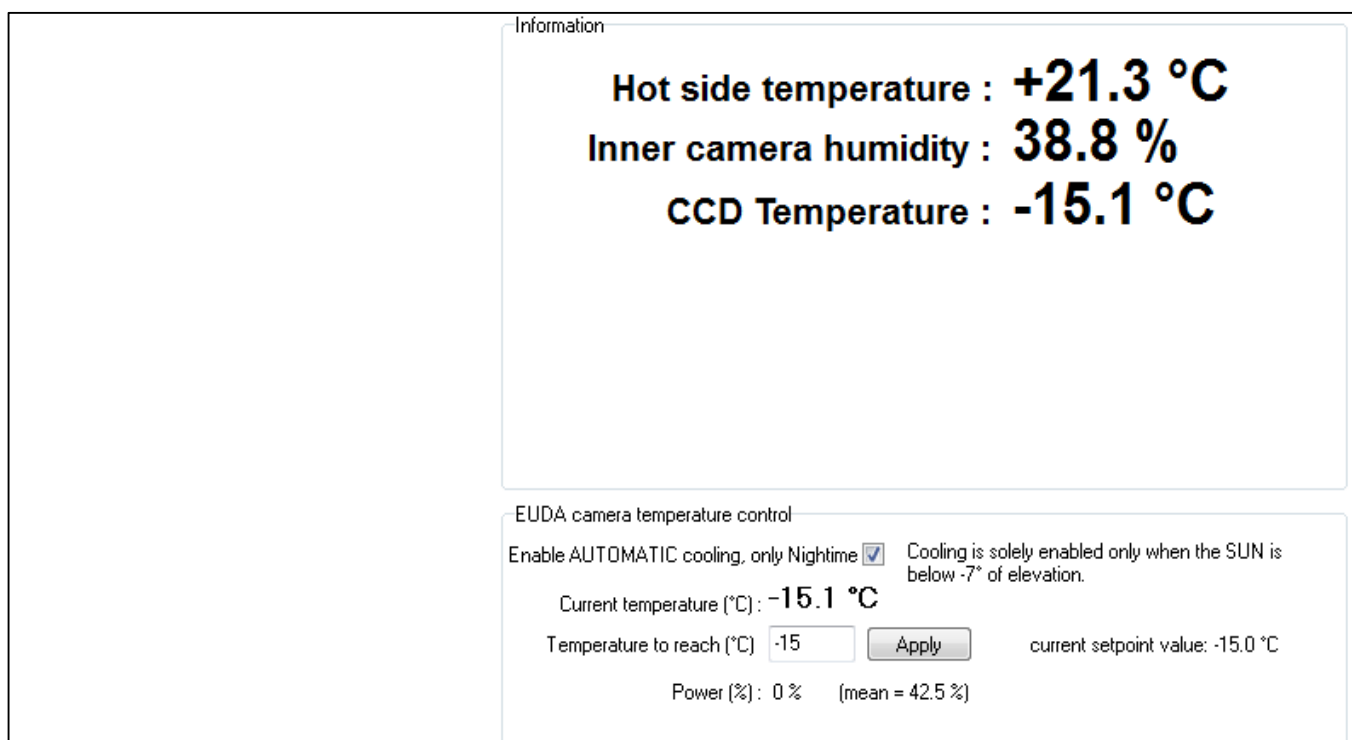


Fig. 33

The Focusing, iris and Filter wheel control can be accessed this way:

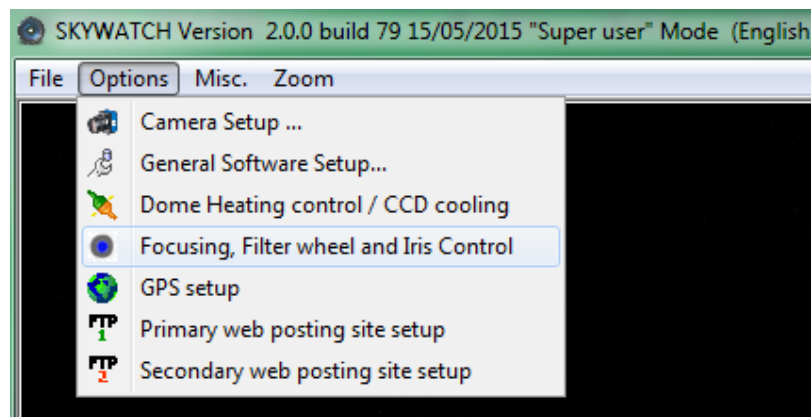


Fig. 34

Go to the **"Filter Wheel"** tab, and define the amount of focuser step for each filter. This information is provided by ALCOR-SYSTEM, but you can refine it if desired.

**Warning: if serial Rs232 COM port is not defined properly, the panel will not show up, and no iris and focus control are possible. The COM port is set by the panel displayed when "Options/Dome Heating control / CMOS cooling" is selected.**

The **"filter wheel"** tab allows to change filter and refocus accordingly, because filters may have not the same thickness and camera must be refocused. The series of number (1275, 1275, 1275, 1300 and 350 steps) to refocus after filter changes is provided by ALCOR-SYSTEM.

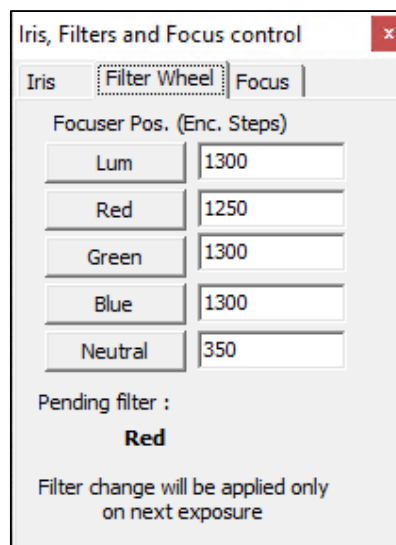


Fig. 35

Filter can be changed during the night, (also during the day if the Neutral filter is not forced to be used), by pressing the button at the left. Then focus can be changed accordingly. Filter changes occurs only before the shutter of the camera is to be opened.

The **"Iris"** tab allows to set the F ratio of the lens as required. During night, it is advised to open it to the maximum aperture, i.e F2.8, and during the day it can be set to any other figure.



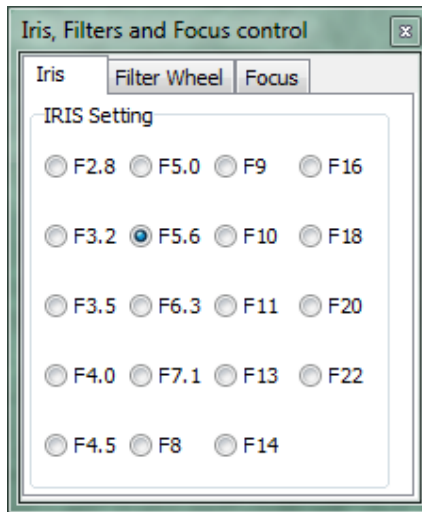


Fig. 36

The "**Focus**" tab, is meant to change focus on the fly, and see if the image quality improves. Reference to zero, allows the system to reset focusing because this is not an absolute focusing system, but a relative encoder from a position. The maximum focus range is from 0 to 1800 encoder's steps. If you want to save the new figure, please go back to the "**filter wheel**" tab.

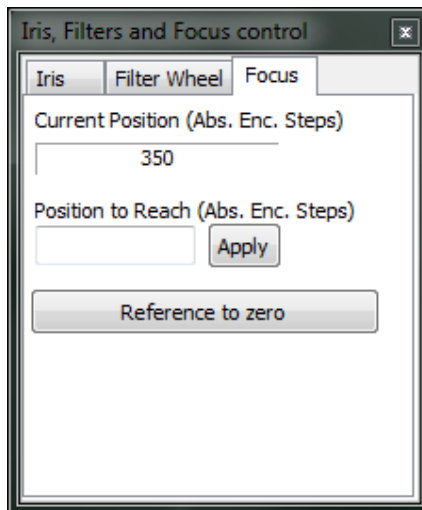


Fig. 37

### 3.2 General Software Setup

The get it, please check the next menu

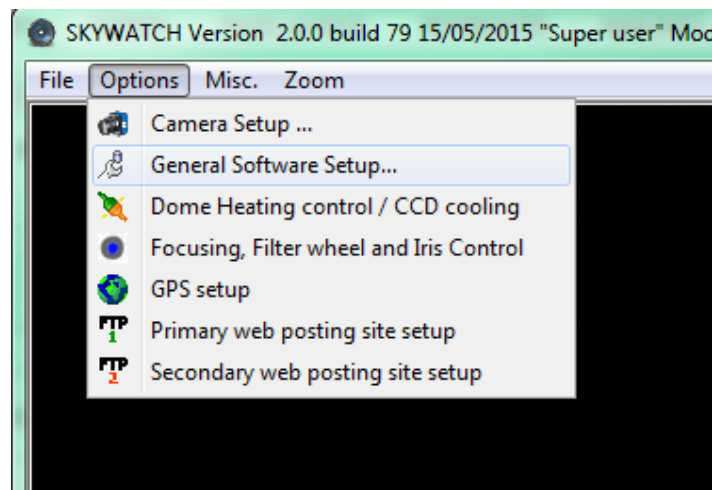


Fig. 38

Set up your geographic place, this is important. It is meant to compute Sun set and Sun rise, and other astronomical parameters.

In the **"Image grab control"** group box, the filter for day operation must be set to neutral filter, and during the night, to a different filter (L, R, G or B) and F ratio.

Recording images during the day with L filter is not possible, the camera exposure time (250ms) does not allow this. So another filter or neutral filter can be used.

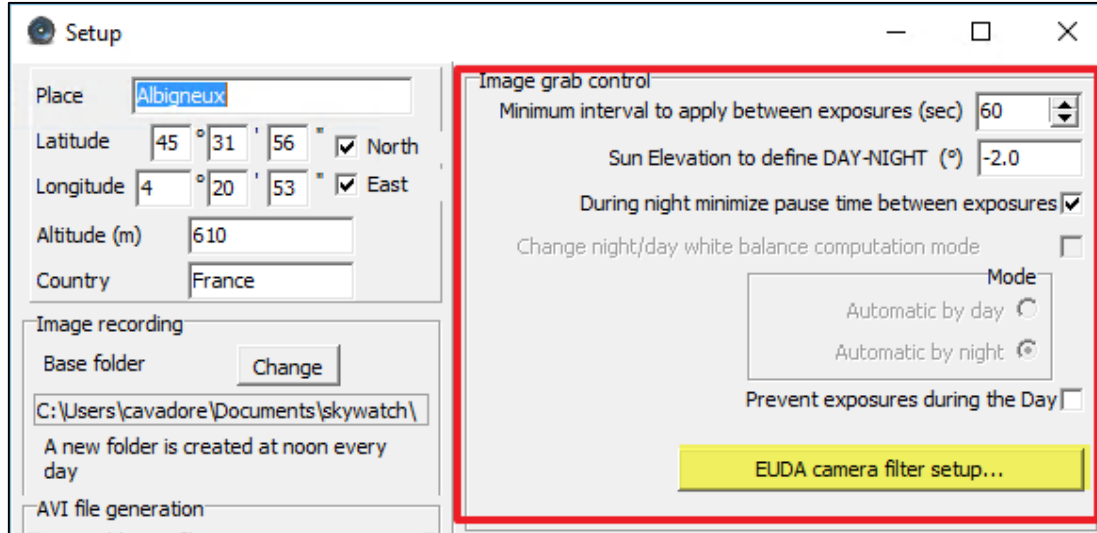


Fig. 39

For information at F5.6, the exposure time during the day with the Neutral filter is around 1.5 sec. Using F5.6 lens stop during the day is a good trade-off.

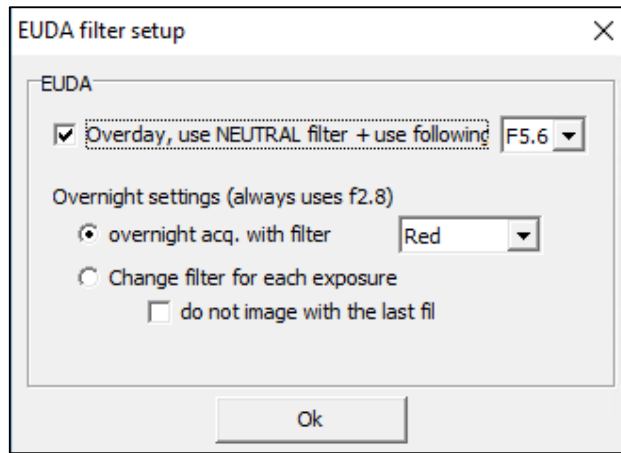


Fig. 40

During the night, either the camera can be used with the same filter, or can change filter for each exposure, that is use the first filter, grab an image then the second filter, grab an image and so on. The last filter, that can be neutral filter, can be avoided from the sequence if the last checkbox is checked (***“Do not Image with the last Filter”***).

Alcor-System had delivered either standard L,R,G,B and Neutral filters, but other filters such Astrodon U'2, G'2, R'2, I'2 and Z\_S2 filters for accuracy photometry study of the all Sky images. During the day

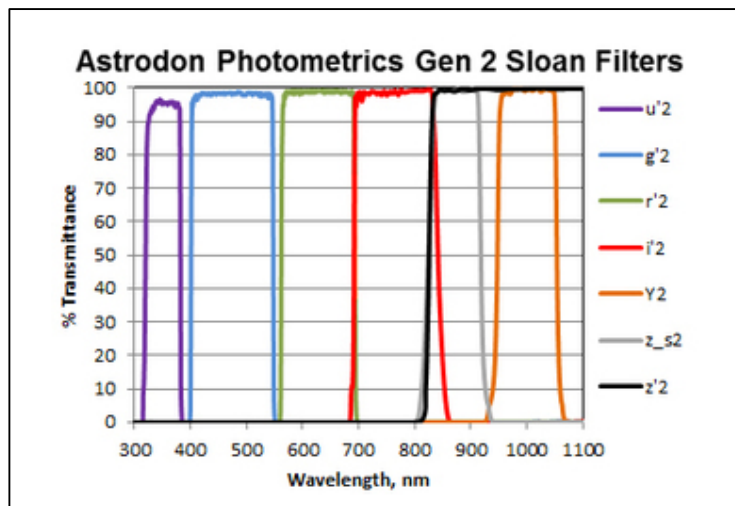


Fig. 41

During the day, images can be achieved with the U'2 or the Z\_S2 filter.

### 3.3 Camera Control panel

The control Panel is always visible on the right side of the screen.

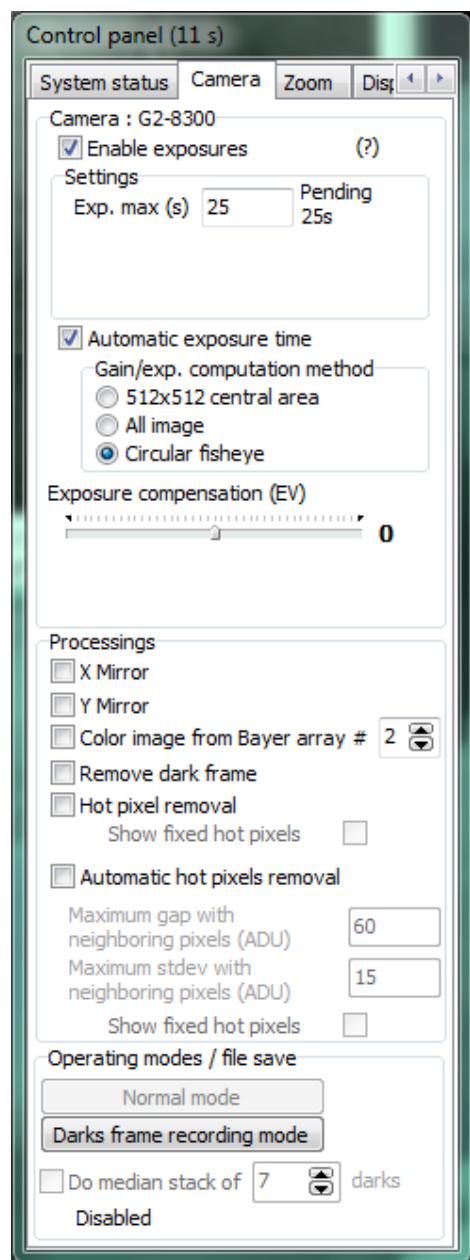


Fig. 42

The “**camera**” tab, is important.

Once the camera is selected, the exposures start immediately. Then, do not forget to check the “**Auto Exposure**” box after the first image has been displayed. Here 25 sec of maximum allowable exposure has been set, so that camera can acquire images during the night of the day with the proper filter.

The minimum exposure time is 0.25 sec

If the camera is cooled, it is not necessary to check “**Remove dark frame**”, “**Hot pixels removal**”, and “**Automatic hot pixels removal**”

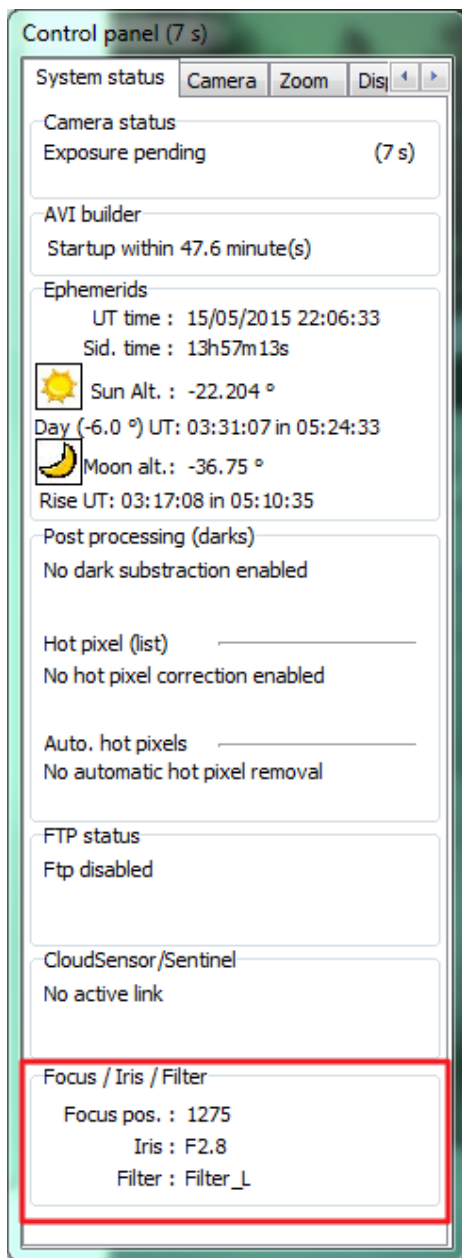


Fig. 43

The system status provides useful information of the camera.

Exposure status, when the AVI file is going to be generated, and other information is displayed.

The Focus/Iris/Filter group box is also visible, provided the camera serial link is connected and the proper COM port being set.

If “**Automatic exposure**” time is checked and “**Circular fisheye**” is chosen, the computation area refers to the circle that is defined into the “display” tab in the camera control panel. To see how this fisheye circle is defined, **enable the grid display** and set the circle (position center and radius) so that it matches the image returned by the camera. The automatic exposure time will use the inner circle area to compute the level for the next exposure time. Do not put more than 25s exposure time, otherwise star will trail due to the Earth rotation.

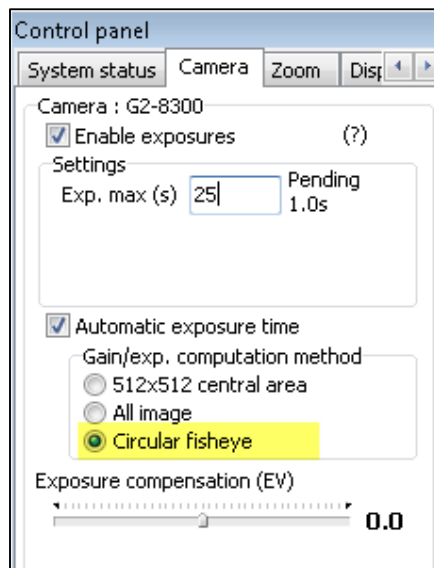


Fig. 44

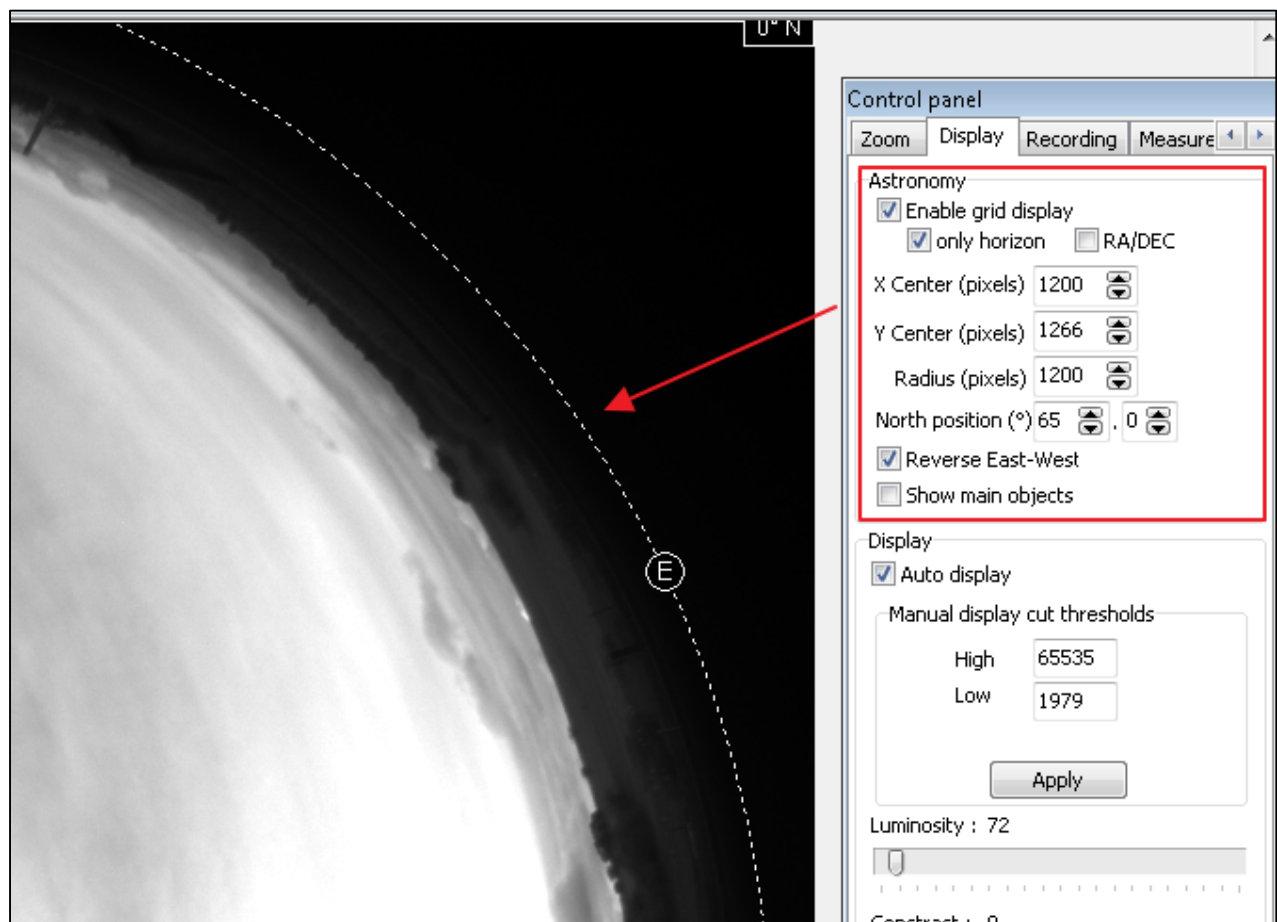


Fig. 45

### 3.4 Storage of files produced by the camera control software

The software stores all the files it produces into a directory that is specific to the user.  
This directory (and subdirectories) is created automatically by the software.

For example, under Windows XP: "C: \ Documents and Settings \ [username] \ My Documents \ SKYWATCH" with [username] = Name by which you connect on Windows XP.



Fig. 46

Under Windows 7,8,10 or Vista : "C: \ Users \ [username] \ My Documents \ SKYWATCH"

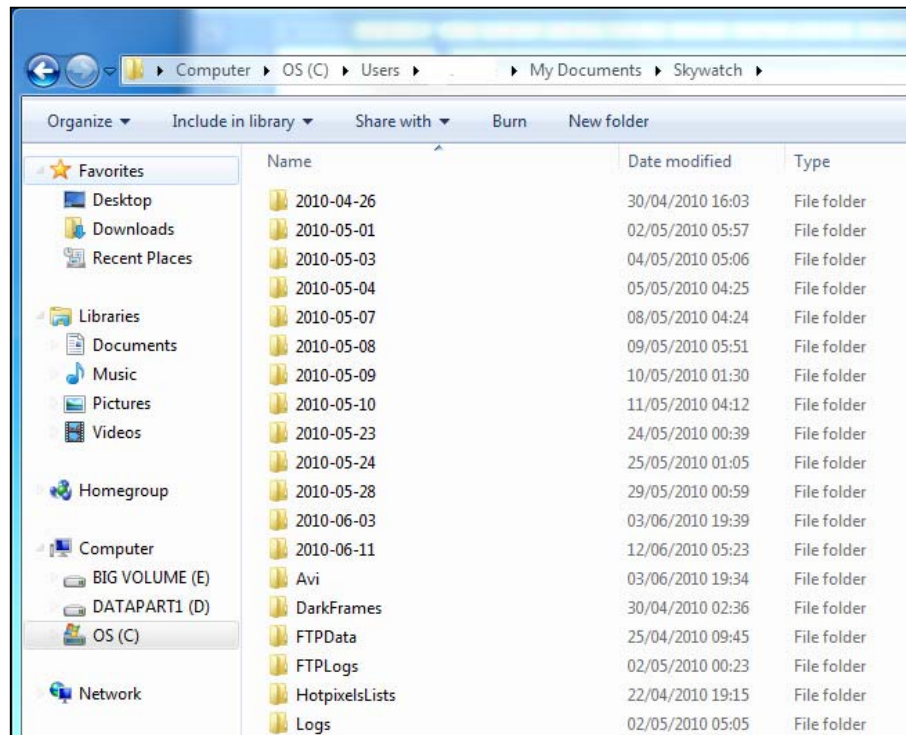


Fig. 47

- The subdirectory *AVI*: contains the latest videos generated by the camera control software.
- The subdirectory *darkframes* : contains the images needed for camera hot pixels removal. All CPA files found there are tried by the software to find the best dark frame to be used to remove camera hot pixels.
- The subdirectory *FTPData*: contains the final JPEG image produced to be uploaded on user's website

- The subdirectory *FTPLog*: contains the log files generated for each image transfer to the website. These logs help to find out issues when transferring files to user's website.
- The subdirectory *HotpixelsList*: contains the *hotpixlist.cos* file used to make hot pixel corrections that were not removed by the subtraction of the optimized dark master frame.  
*Hotpixlist.cos* this is an ASCII file where each line describes the correction to be made to a given X/Y pixel

For instance:

```
fill 103 360 1
fill 289 570 1
fill 304 125 1
fill 664 326 1
```

The first line indicates that the pixel located at X = 103 and Y = 12 and a single pixel size shall be corrected by its neighbors' pixels.

This correction takes into account that the image is a Bayer pattern array (color camera) and picks up neighbors' pixels accordingly.

This file can be automatically generated from a feature from this software (see next paragraph)

- The *logs* files subdirectory: contains the log files of the software, in which are written the software actions and events as a text file. This is for debugging purposes. A new file is created each time you start up the camera control software.  
The log file is enabled into the main's software setup panel. Just enable it in case of issues, because log file can make large files.



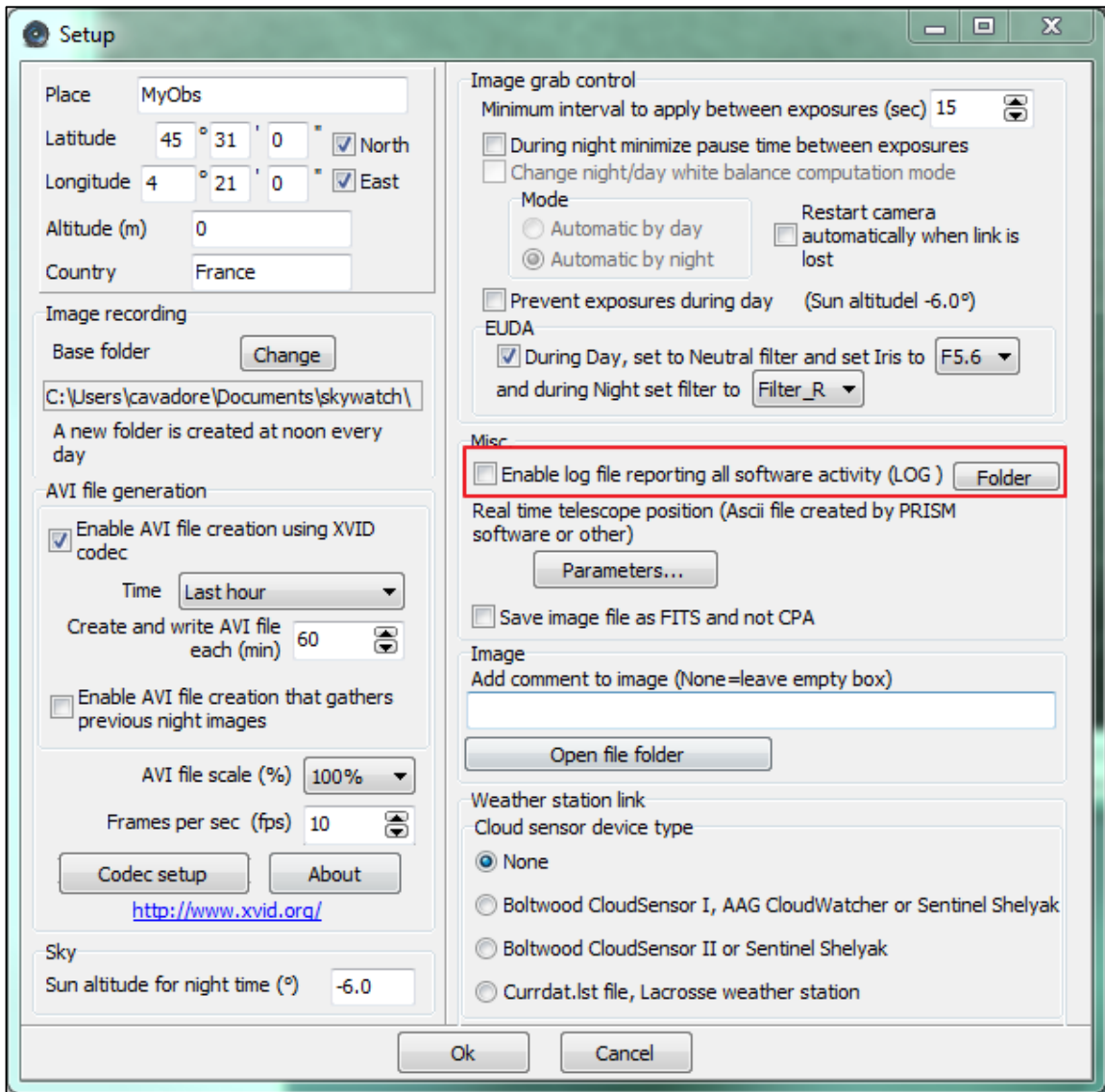


Fig. 48

- The subdirectory *Year\_month\_Day*: contains image files that are saved automatically by the software as jpegs files or CPA/FITS files. The directory is used from noon to noon. For instance, images created from 12:00 on May 10th 2010 till May 11th, 2010 at 11:59 will all be stored inside 2010\_05\_10 subdirectory.

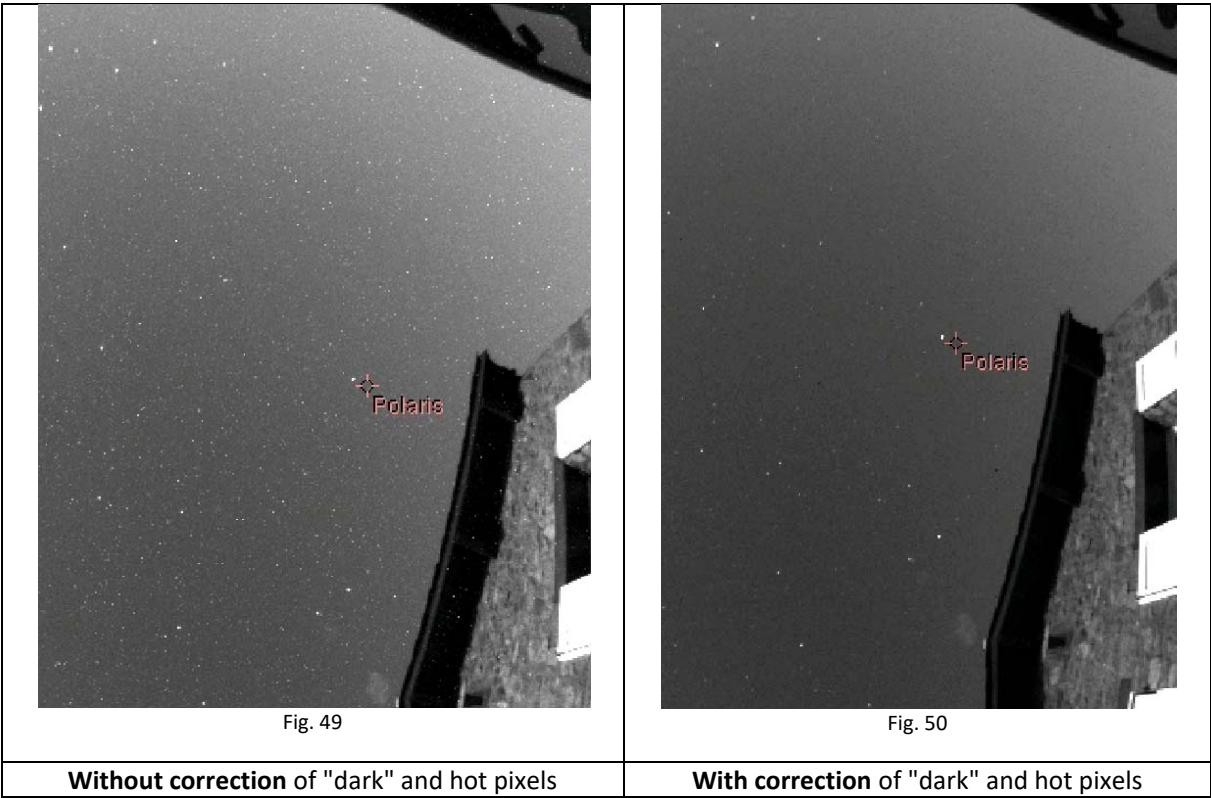
### 3.5 Image hot pixel removal using dark frame image

**The camera embeds, in this system, a system to cool down the camera sensor, so following this procedure in this paragraph is not mandatory, and is not necessary anymore.**

Production of hot pixels depends mainly on the temperature of the CMOS camera that is bound to external temperature. More the camera is being used under conditions of high temperatures, more the number of hot pixels. Exposure time also affects strongly the number of hot pixels: the higher the exposure time, the higher the number of hot pixels.

The following series of images is quite demonstrative: in case of a black and white camera, the pixels are white hot and occupy a single pixel. It is possible to confuse them with stars, but their existence in areas without light reflects an important problem of image quality.

It is therefore essential to correct these hot pixels using an “dark” master frame, and possibly complete the task with a list of pixels to fix.



The software performs hot pixels fixing in three ways:

- By subtracting a master dark frame.
- Local pixel correction from a list of hot pixels
- Automatic local hot pixel removal based on two parameters

Activation of these corrections is achieved using the main camera control panel, camera tab, then on the following checkboxes **"Remove dark frame"**, **"Hot pixel removal"** based on pixel list coordinates or / and **"Automatic hot pixel removal"**

The master dark frame is located in this folder and can be a CPA or a FITS file, later the software can produce these files for you:

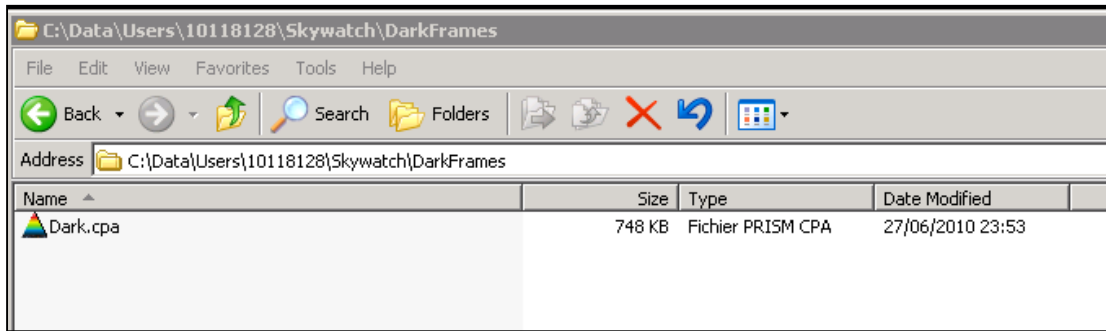


Fig. 51

**During day**, the dark frame correction is not performed, because negligible dark level.

If no file cannot be found inside this “DarkFrames” folder, if the image file does not have the same size in width or height, or if not the same pixels type, a message error will be displayed in the status tab of the control panel.

This dark frame subtraction is performed through an optimization algorithm of the coefficient to be applied to the master dark frame image. If many files are present, the software will select the master dark frame that provides a result that is closest to 1.0.

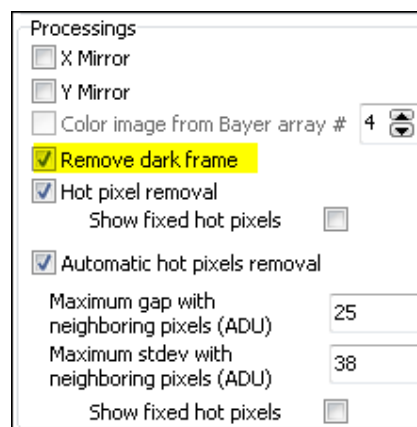


Fig. 52

**The software scans the presence of files in the *DarkFrames* folder and will automatically pick up the most appropriate file.**

This means that if the master dark frame was produced at a given temperature, a given exposure time and a given gain, the software is able to optimize the subtraction of the current image by the best dark frame, even if there were temperature changes. This is performed within a reasonable range of variation. It will be discussed later on the effects and validity of the dark master frame according to the variation of parameters.

As there are still hot pixels that have non-linear behavior and cannot be corrected by the dark master frame, correction using hot pixels list can be achieved, cleaning the image of hot pixels by its neighbors.

Just check the box highlighted in the screenshot below.

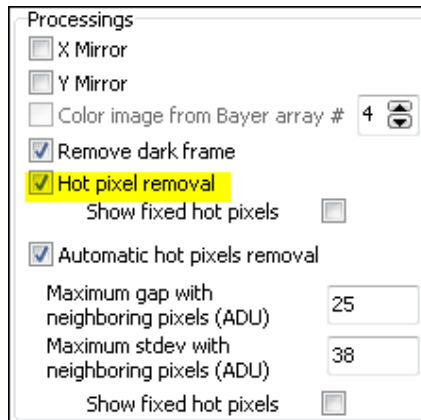


Fig. 53

The file used for this operation can be found here:

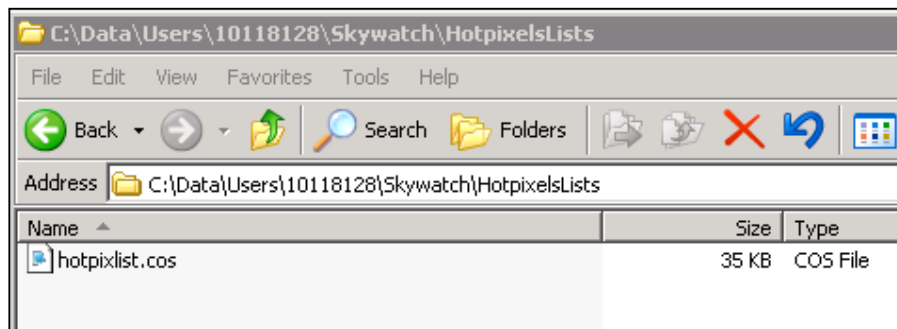


Fig. 54

This is a text file, contains a list of hot pixels to repair/fix.

### 3.5.1 Achieving master dark frame

The files located into DarkFrames folder, whose fundamental purpose has been presented above, may, in some cases no longer be adapted to the current image shooting conditions (due to seasonal temperature changes). This is especially the temperature change that will determine the validity of the master "dark" frame. This validity is above/below 5°C the temperature where the master dark frame has been recorded. Beyond this temperature range, the image hot pixel repair/removal using this dark frame might become poor and not effective.

For example, a master "dark" frame recorded from a set of some dark images at 20 °C will be valid for images acquired between +15 °C to +25 °C.

It is better to build a small library of "dark master" for each 5°C (outdoor temperature)

The software will automatically select the most appropriate in the "DarkFrames" folder.

#### ***How to make a master "dark" frame for a given outdoor temperature?***

This is easy. Under "**Camera**" tab, uncheck "**Auto Exposure time**" and select an exposure time corresponding to the longest exposure time used during night, for example 30s and then do "**Apply**"

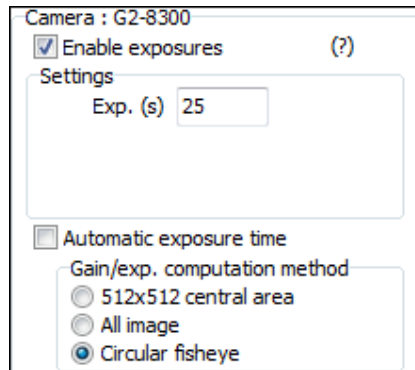


Fig. 55

**Operate ONLY during night** and cover the system (the Plexiglas dome) with a black tissue, or black paper. Be sure that any stray light cannot penetrate to the camera lens. Warning, it's a fisheye that is mounted on the top of the camera, and it able to see 360 ° down to the horizon!

A feature has been implemented to achieve a master dark frame, and also can compute a list of hot pixels too.

Press the **"Dark frame recording mode"** and check **"Do median stack of"** say 5 to 11 **"darks"**.

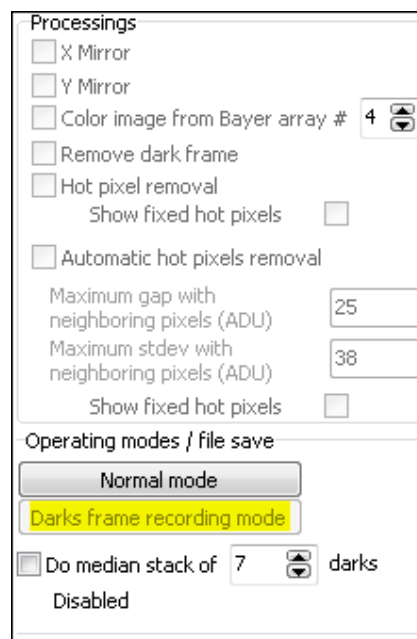


Fig. 56

The software switches into a particular mode that allows it to produce "dark" frames and performs the median stack when the amount of required dark frames have been reached in order to achieve a dark master frame and a list of hot pixels.

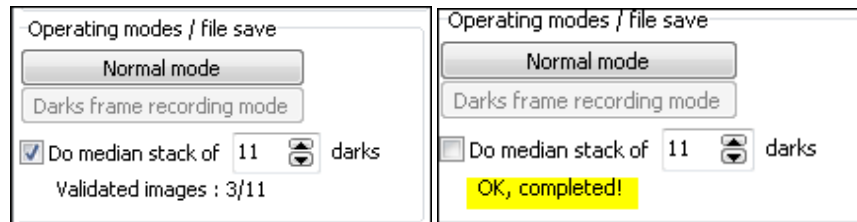


Fig. 57

The resulting files are placed in the proper directories **and are immediately ready for use.**

Once the task is complete, click on "**Normal mode**"

Enable the following features by checking the following boxes:

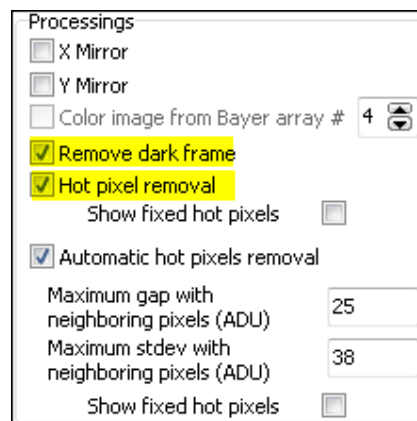


Fig. 58

For each image recorded by the camera, the dark master frame file will be used in the form:

$$\text{Displayed\_image} = \text{Raw\_Image} - k * \text{Master\_dark\_frame\_Image}$$

Where k is a coefficient optimized by the software.

More k is close to 1, the better. In the following scenario, k = 0.95, which is a good value.

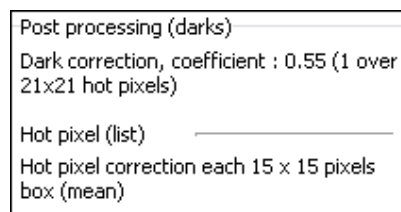


Fig. 59

If  $k > 1.5$  or  $k < 0.5$ , it means that the master dark frame is not well appropriate to the current outdoor temperature conditions. A warning message will be displayed as a red sentence.

### 3.5.2 Residual hot pixels repair/fix

Despite the subtraction by a master dark frame, and the repair of hot pixels based on a list of coordinates, some hot pixels are still variable (appear and disappear from one frame to another). To remove these last hot pixels that can't be removed previously, the next checkbox shall be enabled:

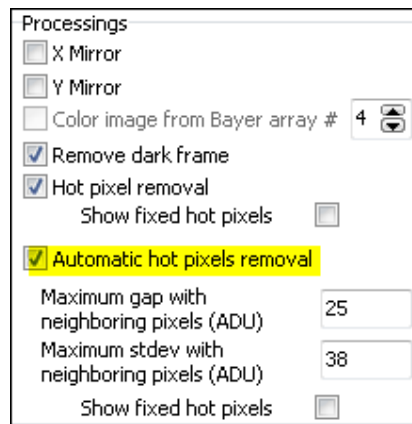


Fig. 60

The algorithm automatically eliminates hot pixels by inspecting all pixels from the incoming image. Two parameters to set two conditions are necessary.

The first parameter defines the difference of the pixel compared to its eight neighbors for which that pixel will be considered as potential hot pixels because it exceeds the defined gap (as ADU).

The second parameter sets the maximum standard deviation of the eight neighboring pixels, if the deviation is less than the defined value; the central pixel is considered as potential hot pixel.

When the two above conditions are met, the hot pixel is fixed automatically.

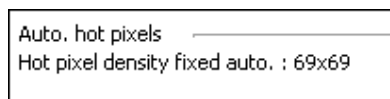


Fig. 61

The figure above shows that the automatic correction is performed on average into one pixel every 69x69 pixel box. To test this feature, use a moonless night, and be careful not to remove some stars of the picture by setting a too low maximum gap and too high standard deviation!

You can see how these fixed pixels are spread over the image, by enabling the following checkbox.

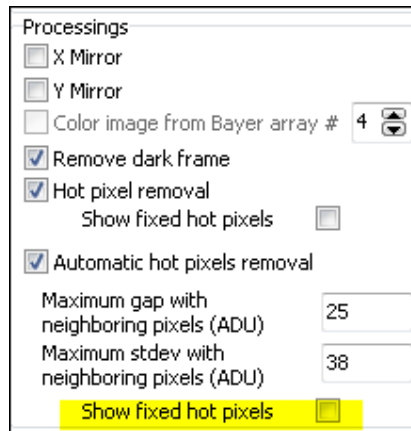


Fig. 62

A pixel density corrected that implies one pixel every 7x7 pixels box is maximum, beyond this density, such as one pixel each 5x5 pixel, the image quality is highly jeopardized, and master "dark" frame and the list of hot pixels bound to it must be achieved.

### 3.5. Status information

In JPEG image, cartridges are indicating camera statuses, "2129" indicates the number of images taken since the software has been started up.

"D 1.6" indicates a correction by a factor 1.6 of the dark frame; "H" indicates hot pixel correction using a list, for example "18x18 H" indicates that an average of one pixel of 18x18 pixel box is repaired. If H! is displayed, this means that the hot pixel file was not found. The "L 9x9" indicates an automatic correction of hot pixels having an average density of 1 pixel per 9 by 9 pixels.

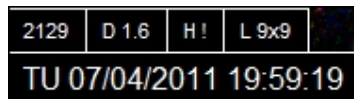


Fig. 63

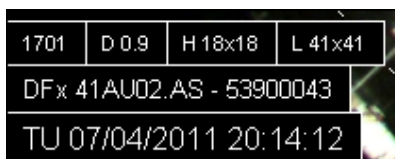


Fig. 64

### 3.6 Setting the overlay grid

**The camera must be installed vertically using a water "bubble" level. Otherwise, the setting of this grid will be difficult and will not match actual image.**

Here is the recommended way to set the grid that is used to identify stars on the image: this is not an automatic procedure; this setting shall be performed manually. But once set, this will be set forever (except the camera is being moved or rotated). In the Control Panel, set the location, latitude and longitude,



altitude, and the country.

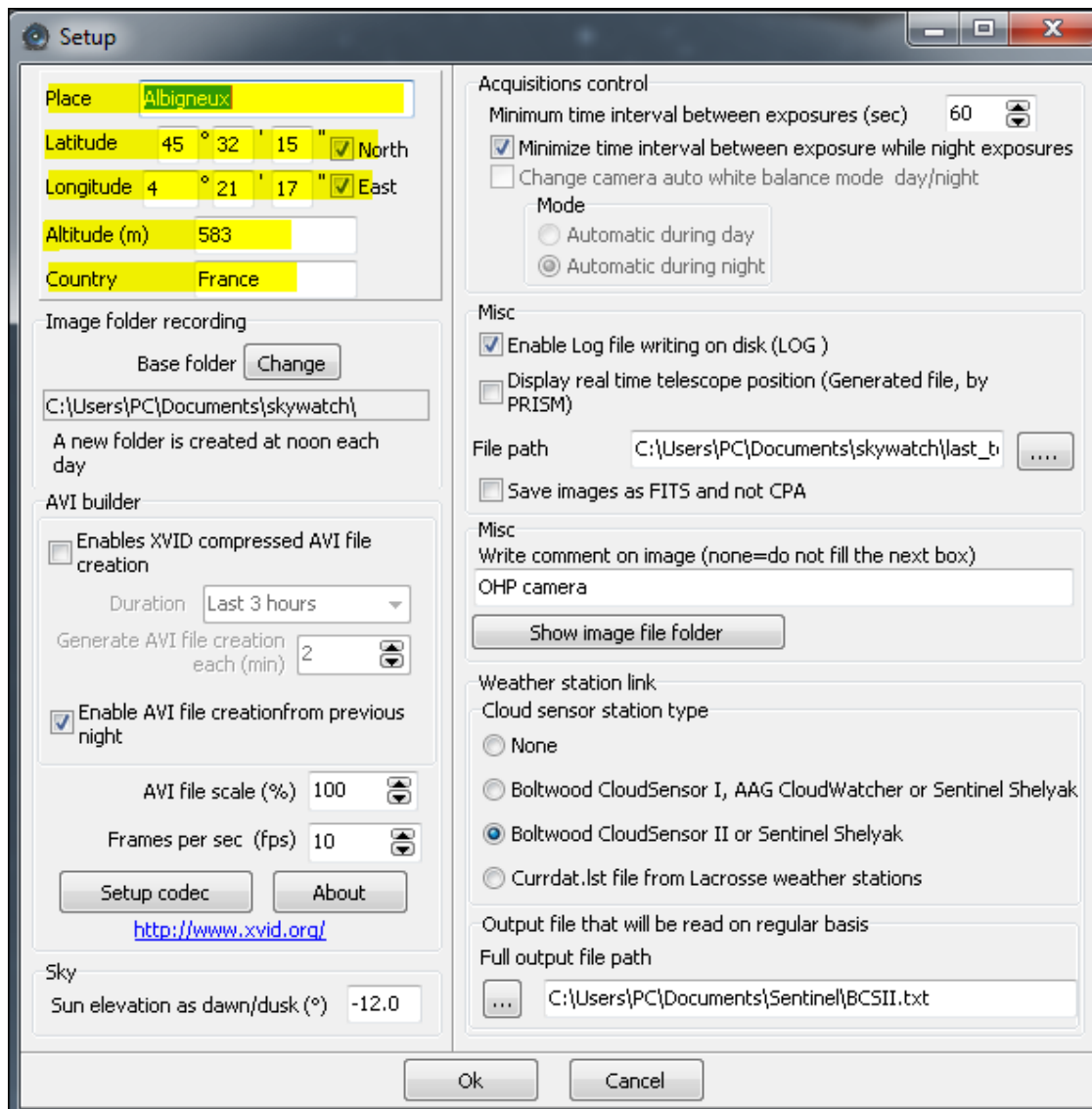


Fig. 65

- Use night time when a star of magnitude 0 to 3 passes to zenith (or say +/- 2° from the zenith)
- Force fixed exposure time of 5s to 10s
- Get to "**Enable grid display**" and "**Show Main object**" (Check "**Only horizon**")
- Find the star that passes nearby zenith and move the cross indicating zenith towards it.
- Change "**X center**" and "**Y center**" figures so that the cross position matches with the star.

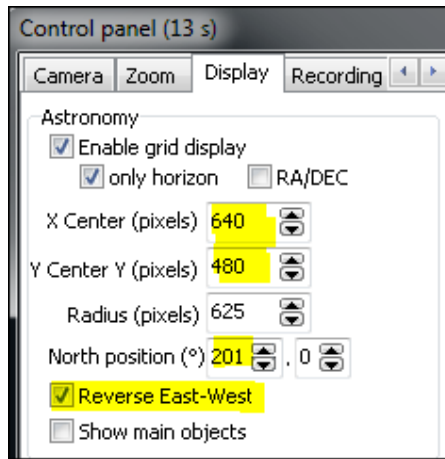


Fig. 66 Displacement in X and Y to adjust the position of the zenith symbol

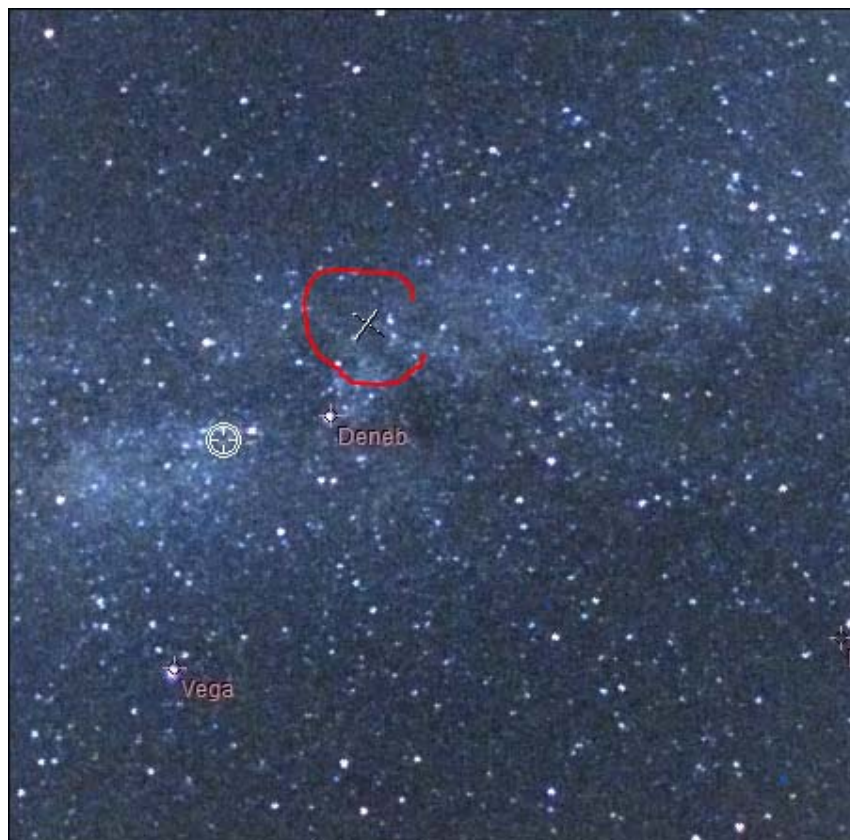


Fig. 67 Star passing nearby zenith (Deneb) and zenith marker

- Once the zenith marker found, you have to set the "north position" to have the grid (circle and star's name) matching with star position. The grid scale can be changed also. The grid (or set of stars position) is changing according to the time and geographical coordinates. Be sure to have set these parameters correctly.

### 3.7 Cyanogen Boldwood, or Sentinel cloud sensors link with camera control software

If you own a cloud monitor from Cyanogen or [Shelyak](#) companies, it is possible to display, at the top right of the image, some weather information. In the main Setup Panel, enter appropriate information. The software uses simply the output file generated by each measurement from cloud sensor. It does not use the COM or ActiveX interface. Enter the path of the generated file provided by the software that runs the cloud sensor.

The amount of information depends on the system that is measuring cloud cover. It will be the most complete using Sentinel Shelyak system (wind direction and zenith magnitude per second squared).

The screenshot shows a 'Setup' dialog box with the following sections:

- Place:** A text field containing 'Albigneux'. Below it are fields for Latitude (45° 32' 15" North), Longitude (4° 21' 17" East), Altitude (m) (583), and Country (France).
- Image folder recording:** A 'Base folder' section with a 'Change' button and a text field showing 'C:\Users\PC\Documents\skywatch\'. Below this is a note: 'A new folder is created at noon each day'.
- AVI builder:** A section with a checkbox 'Enables XVID compressed AVI file creation'. Below it is a 'Duration' dropdown set to 'Last 3 hours' and a 'Generate AVI file creation each (min)' spinner set to 2. There is also a checkbox 'Enable AVI file creation from previous night'. At the bottom are 'Setup codec' and 'About' buttons, and a URL <http://www.xvid.org/>.
- Acquisitions control:** A section with a 'Minimum time interval between exposures (sec)' spinner set to 60. It includes a checked checkbox 'Minimize time interval between exposure while night exposures', an unchecked checkbox 'Change camera auto white balance mode day/night', and a 'Mode' section with radio buttons for 'Automatic during day' and 'Automatic during night' (selected).
- Misc:** A section with a checked checkbox 'Enable Log file writing on disk (LOG )', an unchecked checkbox 'Display real time telescope position (Generated file, by PRISM)', a 'File path' text field with 'C:\Users\PC\Documents\skywatch\last\_b' and a browse button, and an unchecked checkbox 'Save images as FITS and not CPA'.
- Weather station link:** A section with a label 'Cloud sensor station type' and four radio button options: 'None', 'Boltwood CloudSensor I, AAG CloudWatcher or Sentinel Shelyak', 'Boltwood CloudSensor II or Sentinel Shelyak' (selected), and 'Currdat.lst file from Lacrosse weather stations'. Below this is a text field for 'Output file that will be read on regular basis' with the path 'C:\Users\PC\Documents\Sentinel\BCSII.txt'.

At the bottom of the dialog are 'Ok' and 'Cancel' buttons.

Fig. 68 Group of information to provide to connect with cloud sensor system control software.

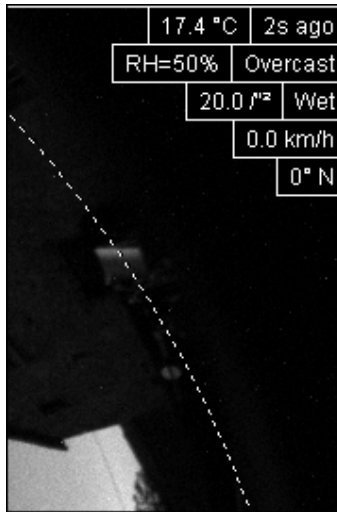


Fig. 69 List of information coming from Sentinel or Boltwood cloud sensor included in the image

### 3.8 Magnitude per square second display image mode

The software allows the calculation of radiometric magnitude per square second across the sky. It works on color and monochrome cameras. In case of color image, only green pixels will be considered (50%). To do so, you have to open this tab:

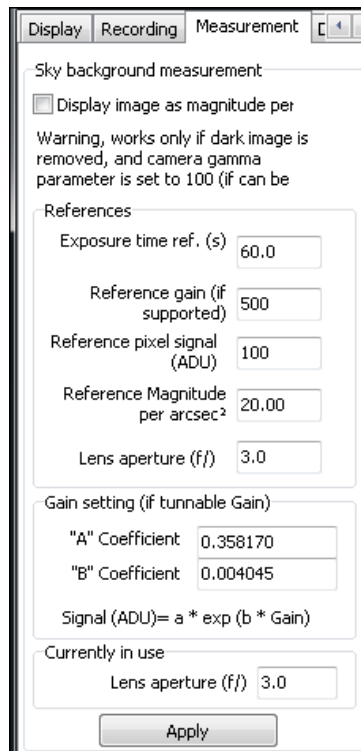


Fig. 70 Tab used to set magnitude image mode display

The calculation is based on a reference image, with reference parameters. To perform this, a reference image is achieved with:

- An exposure time reference
- A camera gain reference

- Opening aperture reference (which is usually fixed as the aperture setting is not accessible).
- Subtracting the reference image by a master dark frame
- The camera gamma adjustment must be set to 100.
- Avoid the presence of Milky Way overhead.
- Save reference image as CPA / FITS

Using this reference image, the signal is expressed as ADU. Nearby zenith the signal is measured and is reduced to a pixel, and must be entered in the panel from figure (Fig. 71) "**Reference pixel signal**" field. It is advisable to use image processing software (such as Prism or equivalent).

At the time of reference image acquisition (during night), using a sky meter measuring device such as Sentinel or SkyQualityMeter (Unihedron), the magnitude per square second will be retrieved and entered as a reference "**Reference Magnitude per arcsec<sup>2</sup>**".

The coefficients "A" (0358) and "B" (0.004045) are specific to the camera law gain and might remain at their default values above, but can be re-calibrated in laboratory for a specific camera.

Once the calibration parameters known, the software calculates the magnitudes map per square second from the last image grabbed from the camera. Median filtering is performed to remove most of the stars. The image pixels are expressed in magnitude per square second, a false-color palette is applied and a color scale indicates the color to magnitude correlation.

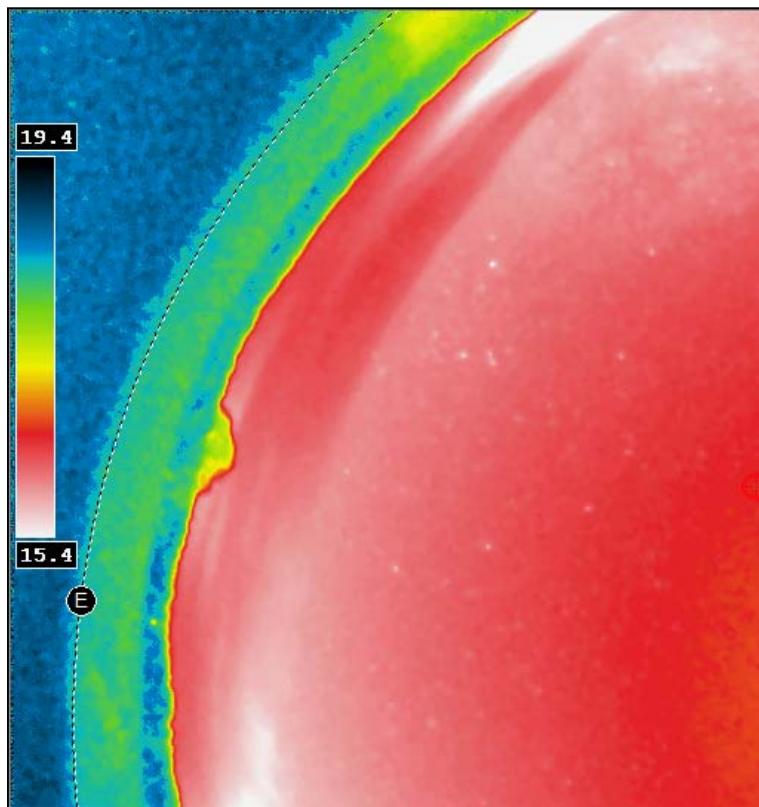


Fig. 72 Map of the sky expressed as magnitudes per arcsec square with false colors.

### 3.9 Telescope control software link

Telescope's pointing direction can be display and embedded to the last all Sky Image. The telescope pointing software shall be able to generate a simple text file, containing date and time of the measured position and equinox 2000 RA/DEC coming from the telescope current position.

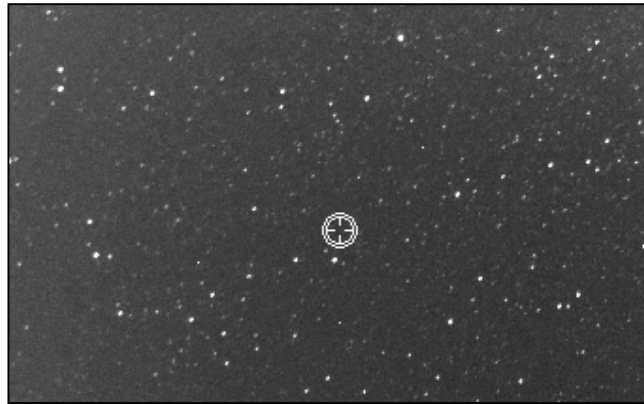


Fig. 73 *Current telescope position merged to the last all Sky image*

If the time gap between the current date and the date of the last telescope position is greater than 10s, the telescope's cross position switches to red color, indicating that the position is no longer refreshed by the software, and thus might not be valid.

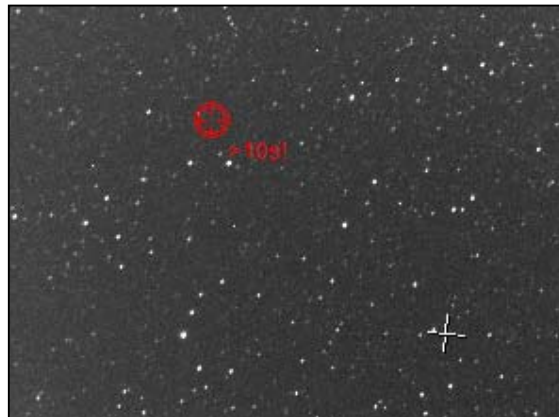


Fig. 74 *Telescope position as red because current date and telescope position date is larger than 10s*

Here is the file format used to read telescope position as ASCII file, 1<sup>st</sup> line is number of days since Dec 31<sup>st</sup> 1899 at 12 o'clock, the second line is RA as radian, the third line is DEC as radian:

```
40307.9796818056
4.3461698620
0.9539777407
UTTime = 09/05/2010 11:30:44 p.m.
RA2000 = 16h36m04.126s
DEC2000 = +54 ° 39'32 .03''
```

The other remaining lines are not read and are just provided for information.

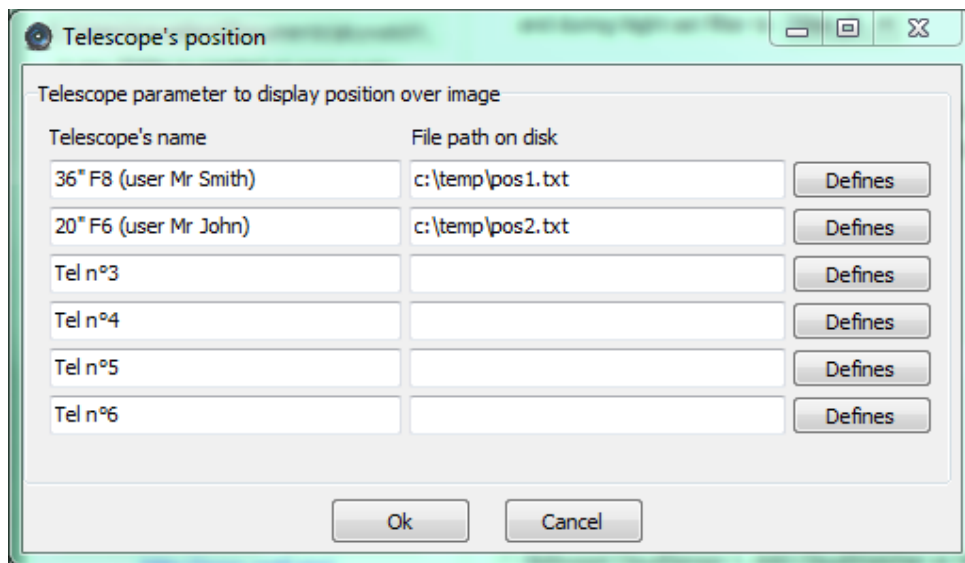


Fig. 75 Telescope's names can be set in this form

## 4 Trouble shooting

This section aims at providing hints to solve issues.

### 4.1 **Focus**

Focus is a paramount parameter in this system, and since the user can adjust it remotely, it can end up not been set properly. Alcor-System delivers the correct focus values according to your filters set.

Below is a small 250x250 pixel screen capture of the image center. Star must be very sharp (like 1.5 pixel max) like this image below:



Fig. 76 Good focus

The next images show poor focusing. It must be absolutely adjusted!



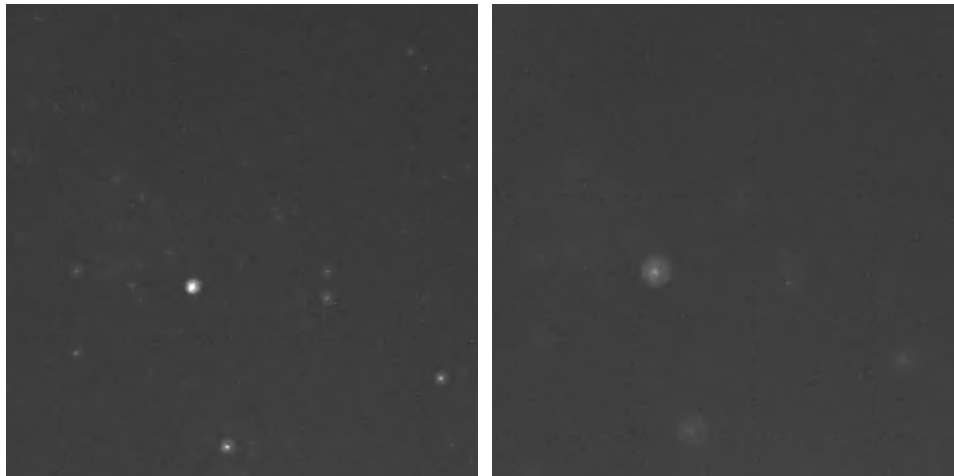


Fig. 77 very poor/bad focus

The next panel must be used to adjust it. Please do a “**Reference to zero**” first. Change the focus value, do “**Apply**” and check image sharpness when next exposure is coming.

Iris, Filters and Focus control

Iris | Filter Wheel | Focus

Current Position (Abs. Enc. Steps)  
1250

Position to Reach (Abs. Enc. Steps)  
1225 Apply

Reference to zero

Fig. 78 Panel to adjust current focus, press “**Reference to zero**” first, just in case.

Once a good value is found, do not forget to update it into the filter control. For instance, with the red filter, the correct figure is 1225 encoder’s steps, change the Red filter focuser position figure from 1250 to 1225.

Iris, Filters and Focus control

Iris | Filter Wheel | Focus

Focuser Pos. (Enc. Steps)

Lum	1300
Red	1225
Green	1300
Blue	1300
Neutral	350

Pending filter :  
**Red**

Filter change will be applied only on next exposure

Fig. 79 Focus position updated.



Focusing tolerance is less than  $\pm 25$  encoders steps, so be careful.

## **7.2 Dew inside the dome**

This may happen after several year of operation, if the internal desiccant is exhausted. Please check the internal humidity figure. It should be less than 20%, above 60% dew can form easily. To replace the internal desiccant, please contact us to get the procedure.

## 5 Camera maintenance

### 5.1 Sphere cleaning

Sphere cleaning must be achieved on regular basis. Rains can bring dust that is deposited on the sphere surface; it reduces the optical transmission and image quality.

The acrylic sphere outer and inner surface can be cleaned with water, then with a Kleenex moistened with washer fluid dedicated for window cleaning. The 8 screws can be removed to detach the sphere from the rest of the camera. Attention must be paid on these topics:

- The cable bringing power to the heaters should not be pinched during reassembly
- O-rings properly positioned in their grooves
- The distance between the sphere support and the camera body must be at least 3 mm and constant around the perimeter.
- 8 screws must be put together with their washer and all tightened the same way.

Incorrect reassembly can cause loss of sealing, allowing rain to enter and de facto guarantees no longer apply. If you feel confident with dismounting sphere, please do not do it.

## 6 **Product terms of use**

The use of this product is solely for monitoring the sky, night and day, entertaining, educational or scientific purposes.

Use of this product involving people's lives is the responsibility of the user and in no way ALCOR SYSTEM will be held liable for injuries to persons or property theft as the use of this camera described in this manual.

---oOo---